

WASHINGTON, DISTRICT OF COLUMBIA
Monthly, Seasonal, and Annual Precipitation
(measurements in inches)

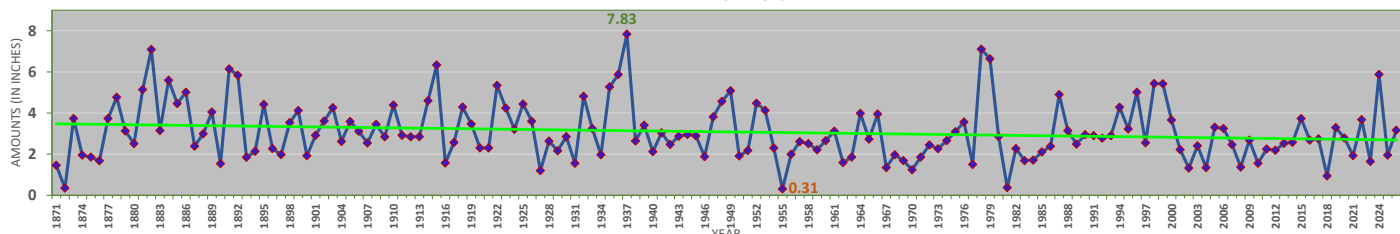
Period of Record: 1871-Present

YEAR	JAN	FEB	MAR	APR	MAY	JUN	JUL	AUG	SEP	OCT	NOV	DEC	CALENDAR YEAR	WINTER (Dec-Feb)	SPRING (Mar-May)	SUMMER (Jun-Aug)	AUTUMN (Sept-Nov)	YEAR
1871	1.46	2.70	5.92	0.91	3.45	4.78	6.10	1.69	2.70	2.11	5.02	1.32	38.16		10.28	12.57	9.83	1871
1872	0.35	0.93	3.23	1.77	1.43	2.78	0.82	6.92	3.92	4.83	2.75	2.49	32.22	2.60	6.43	10.52	11.50	1872
1873	3.73	4.69	3.03	3.19	5.22	1.63	4.30	6.83	3.48	5.62	3.02	0.97	45.71	10.91	11.44	12.76	12.12	1873
1874	1.95	1.84	2.06	5.65	2.82	3.47	2.34	1.51	7.84	0.29	2.08	2.59	34.44	4.76	10.53	7.32	10.21	1874
1875	1.86	2.65	3.96	2.29	1.01	2.06	3.05	12.93	1.98	1.86	3.95	3.51	41.11	7.10	7.26	18.04	7.79	1875
1876	1.68	3.50	5.52	2.43	3.02	4.59	5.12	4.17	10.81	2.99	2.83	1.30	47.96	8.69	10.97	13.88	16.63	1876
1877	3.73	1.16	3.58	4.87	2.26	5.92	6.50	2.74	4.93	6.50	7.18	3.22	52.59	6.19	10.71	15.16	18.61	1877
1878	4.77	2.54	4.31	3.32	5.27	6.33	8.37	8.89	2.46	5.86	3.03	4.94	60.09	10.53	12.90	23.59	11.35	1878
1879	3.13	1.87	1.74	2.39	1.58	3.29	3.36	7.36	1.56	0.79	1.10	4.66	32.83	9.94	5.71	14.01	3.45	1879
1880	2.51	1.71	5.60	3.81	3.37	3.52	2.25	3.83	3.42	2.31	2.48	4.02	38.83	8.88	12.78	9.60	8.21	1880
1881	5.14	4.01	6.61	2.08	1.86	5.71	1.67	1.07	2.19	3.29	2.45	6.12	42.20	13.17	10.55	8.45	7.93	1881
1882	7.09	5.09	3.75	2.55	5.00	2.33	4.46	4.44	7.84	0.53	1.33	2.38	46.79	18.30	11.30	11.23	9.70	1882
1883	3.15	5.08	3.27	4.09	2.50	8.55	4.73	3.30	4.33	2.63	1.19	2.89	45.71	10.61	9.86	16.58	8.15	1883
1884	5.59	6.84	7.24	1.86	3.09	6.95	7.39	1.01	0.14	1.73	3.42	4.70	49.96	15.32	12.19	15.35	5.29	1884
1885	4.46	4.63	1.53	1.71	2.85	3.30	3.03	6.49	2.15	8.69	3.33	2.67	44.84	13.79	6.09	12.82	14.17	1885
1886	5.01	4.32	6.41	2.71	10.60	6.75	10.63	2.43	1.79	1.20	2.88	3.44	58.17	12.00	19.72	19.81	5.87	1886
1887	2.39	3.42	3.83	3.24	2.50	2.99	3.29	2.34	3.12	1.82	1.83	4.31	35.08	9.25	9.57	8.62	6.77	1887
1888	2.99	3.19	4.53	1.89	4.77	3.53	4.47	3.35	6.82	3.27	2.97	3.27	45.05	10.49	11.19	11.35	13.06	1888
1889	4.05	2.47	4.20	9.13	10.69	5.01	8.13	3.07	3.88	4.48	6.03	0.19	61.33	9.79	24.02	16.21	14.39	1889
1890	1.54	4.20	3.65	2.81	4.73	2.02	3.24	5.50	4.22	5.15	0.79	3.74	41.59	5.93	11.19	10.76	10.16	1890
1891	6.14	4.49	8.84	2.94	3.72	4.61	8.40	4.18	3.12	2.24	1.47	2.80	52.95	14.37	15.50	17.19	6.83	1891
1892	5.84	3.64	5.70	4.52	4.07	2.59	5.04	0.85	3.55	0.34	3.38	2.82	42.34	12.28	14.29	8.48	7.27	1892
1893	1.85	4.25	1.83	3.21	5.41	1.81	1.44	2.32	3.91	4.11	4.30	2.27	36.71	8.92	10.45	5.57	12.32	1893
1894	2.14	4.64	0.98	3.34	4.03	1.24	2.14	2.00	1.53	3.14	1.52	4.15	30.85	9.05	8.35	5.38	6.19	1894
1895	4.42	1.10	2.59	6.26	3.09	4.34	4.50	1.26	1.11	1.94	1.26	2.38	34.25	9.67	11.94	10.10	4.31	1895
1896	2.27	5.31	5.16	1.07	2.26	2.39	3.69	2.65	3.18	0.34	2.54	0.30	31.16	9.96	8.49	8.73	6.06	1896
1897	1.98	6.47	2.66	3.02	6.97	2.60	5.78	3.35	1.54	3.55	3.31	3.35	44.58	8.75	12.65	11.73	8.40	1897
1898	3.54	1.64	2.52	2.36	3.60	1.33	2.86	8.76	0.89	3.54	3.12	3.56	37.72	8.53	8.48	12.95	7.55	1898
1899	4.12	6.17	4.94	1.54	2.53	2.46	6.06	3.77	6.14	2.80	1.81	1.68	44.02	13.85	9.01	12.29	10.75	1899
1900	1.92	5.26	3.07	1.74	4.02	10.94	1.25	2.28	4.61	1.44	2.15	2.52	41.20	8.86	8.83	14.47	8.20	1900
1901	2.92	0.62	2.64	6.34	2.81	4.66	5.17	4.12	1.61	0.97	2.33	7.56	41.75	6.06	11.79	13.95	4.91	1901
1902	3.61	4.72	3.78	2.22	3.35	3.70	2.54	1.85	5.30	6.76	3.46	5.29	46.58	15.89	9.35	8.09	15.52	1902
1903	4.26	5.32	5.73	4.29	2.75	3.60	5.17	4.52	0.74	4.48	0.80	1.89	43.55	14.87	12.77	13.29	6.02	1903
1904	2.62	1.65	3.02	2.98	2.64	5.49	6.25	2.97	5.34	2.35	2.20	3.33	40.84	6.16	8.64	14.71	9.89	1904
1905	3.59	2.55	3.31	2.69	3.22	4.52	9.95	9.75	2.34	2.30	1.03	5.39	50.64	9.47	9.22	24.22	5.67	1905
1906	3.11	2.14	4.62	3.03	1.80	5.89	6.80	14.36	0.60	5.71	1.63	3.23	52.92	10.64	9.45	27.05	7.94	1906
1907	2.54	2.30	2.79	3.61	5.03	4.86	1.55	4.34	7.15	2.12	4.16	4.20	44.65	8.07	11.43	10.75	13.43	1907
1908	3.45	3.98	2.45	1.60	6.10	1.73	3.29	5.14	4.65	1.71	0.60	3.63	38.33	11.63	10.15	10.16	6.96	1908
1909	2.84	3.11	4.76	2.69	3.77	3.82	1.80	2.27	3.42	0.79	0.89	3.39	33.55	9.58	11.22	7.89	5.10	1909
1910	4.39	2.20	0.57	5.89	3.43	4.77	3.73	1.26	2.15	5.74	2.28	2.64	39.05	9.98	9.89	9.76	10.17	1910
1911	2.92	1.92	2.31	2.85	0.87	4.55	4.47	7.27	2.03	4.07	3.85	3.34	40.45	7.48	6.03	16.29	9.95	1911
1912	2.84	2.70	6.14	2.33	4.84	4.36	7.21	1.50	5.86	0.65	1.54	4.12	44.09	8.88	13.31	13.07	8.05	1912
1913	2.85	1.37	4.67	5.86	4.56	1.81	3.24	5.42	2.41	3.37	2.20	2.29	40.05	8.34	15.09	10.47	7.98	1913
1914	4.60	3.05	2.27	3.20	1.72	6.20	2.32	6.00	0.66	1.65	2.06	4.49	38.22	9.94	7.19	14.52	4.37	1914
1915	6.34	3.60	1.07	0.90	2.18	6.58	3.21	7.00	1.39	3.72	0.93	2.80	39.72	14.43	4.15	16.79	6.04	1915
1916	1.57	2.84	2.80	2.96	2.30	7.53	4.97	2.83	2.57	1.76	2.11	4.03	38.27	7.21	8.06	15.33	6.44	1916
1917	2.57	1.97	5.12	2.16	1.84	6.25	9.41	0.77	1.34	4.81	0.53	1.47	38.24	8.57	9.12	16.43	6.68	1917
1918	4.29	0.83	5.04	6.58	2.35	2.06	3.79	1.88	2.79	0.86	1.48	4.65	36.60	6.59	13.97	7.73	5.13	1918
1919	3.47	2.01	4.02	3.72	5.27	3.44	6.80	3.41	1.77	3.64	2.31	3.32	43.18	10.13	13.01	13.65	7.72	1919
1920	2.30	3.47	2.39	4.69	1.42	4.80	5.71	4.70	2.87	0.40	4.51	3.15	40.41	9.09	8.50	15.21	7.78	1920
1921	2.30	2.29	2.76	2.93	5.82	3.45	4.79	1.10	3.29	1.35	4.15	1.95	36.18	7.74	11.51	9.34	8.79	1921
1922	5.34	2.86	4.74	1.05	4.27	4.10	9.59	3.08	6.27	1.41	0.55	3.48	46.74	10.15	10.06	16.77	8.23	1922
1923	4.24	2.19	4.47	3.94	1.50	2.80	4.92	2.19	3.15	1.36	2.04	2.80	35.60	9.91	9.91	9.91	6.55	1923
1924	3.21	3.05	6.17	5.39	6.73	3.89	2.76	5.07	7.86	0.44	1.47	2.98	49.02	9.06	18.29	11.72	9.77	1924
1925	4.44	0.98	1.60	2.44	1.67	1.53	3.82	3.89	3.05	4.86	3.53	1.07	32.88	8.40	5.71	9.24	11.44	1925
1926	3.60	4.17	2.07	0.79	2.22	1.66	4.20	5.50	6.80	4.23	5.29	3.02	43.55	8.84	5.08	11.36	16.32	1926
1927	1.20	3.34	1.27	4.96	2.21	4.01	1.82	3.84	1.19	5.33	2.65	3.51	35.33	7.56	8.44	9.67	9.17	1927
1928	2.63	2.69	2.17	4.49	4.00	2.66	2.17	14.41	4.29	0.67	2.01	1.21	43.40	8.83	10.66	19.24	6.97	1928
1929	2.16	3.19	2.64	6.10	2.29	7.41	1.29	1.30	4.32	4.82	1.70	2.20	39.42	6.56	11.03	10.00	10.84	1929
1930	2.85	1.64	2.26	3.12	1.81	3.19	2.30	0.62	0.76	0.28	0.79	2.04	21.66	6.69	7.19	6.11	1.83	1930
1931	1.56	1.36	3.50	2.87	4.84	2.12	4.23	5.92	2.79	1.28	1.01	2.03	33.51	4.96	11.21	12.27	5.08	1931
1932	4.82	2.46	6.45	2.12	5.07	2.84	2.43	1.36	4.24	7.40	6.43	3.93	49.55	9.31	13.64	6.63	18.07	1932
1933	3.25	2.63	3.24	4.67	6.26	3.88	6.71	9.91	2.62	2.56	0.95	2.43	49.11	9.81	14.17	20.50	6.13	1933
1934	1.97	3.22	4.18	2.27	3.85	2.87	2.88	5.21	17.45	0.75	3.58	2.91	51.14	7.62	10.30	10.96	21.78	1934
1935	5.27	2.37	3.39	3.95	3.54	3.43	2.25	2.40	8.08	2.76	4.03	2.06	43.53	10.55	10.88	8.08	14.87	1935
1936	5.87	3.83	4.47	1.98	5.32	2.29	4.07	3.61	1.98	1.70	0.76	5.23	41.11	11.76	11.77	9.97	4.44	1936
1937	7.83	3.33	1.50	6.85	4.02	5.23	3.67	6.70	1.76	8.81	3.88	0.71	54.29	16.39	12.37	15.60	14.45	1937
1938	2.64	2.37	2.23	1.67	3.51													

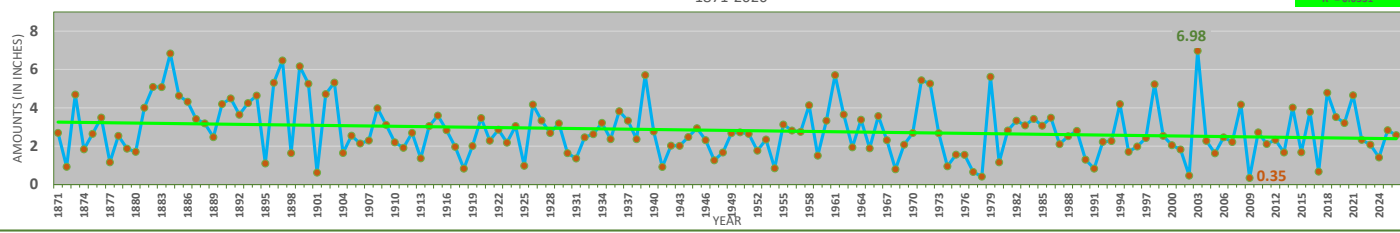
1962	1.59	3.65	3.83	2.90	3.46	2.44	1.63	0.55	2.64	1.93	5.12	3.33	33.07	8.12	10.19	4.62	9.69	1962
1963	1.86	1.94	5.43	0.99	1.06	6.87	1.95	7.21	3.61	T	6.70	1.72	39.34	7.13	7.48	16.03	10.31	1963
1964	3.98	3.38	2.53	4.37	1.46	1.30	1.87	1.89	3.07	1.34	1.42	2.87	29.48	9.08	8.36	5.06	5.83	1964
1965	2.73	1.89	4.37	1.65	1.72	1.88	2.98	4.44	2.12	2.32	0.37	0.47	26.94	7.49	7.74	9.30	4.81	1965
1966	3.95	3.57	1.44	3.33	2.74	2.02	0.93	1.67	6.87	4.72	1.50	3.28	36.02	7.99	7.51	4.62	13.09	1966
1967	1.35	2.32	3.49	0.80	4.27	1.51	5.24	9.17	0.20	1.77	2.10	5.93	38.15	6.95	8.56	15.92	4.07	1967
1968	1.97	0.80	3.66	1.53	4.23	7.40	1.31	3.95	2.97	3.17	3.62	2.22	36.83	8.70	9.42	12.66	9.76	1968
1969	1.69	2.08	1.60	1.71	1.20	3.46	9.44	6.98	5.07	1.14	2.39	6.54	43.30	5.99	4.51	19.88	8.60	1969
1970	1.24	2.69	2.82	5.35	2.79	2.80	8.12	1.09	1.57	2.05	5.77	3.33	39.62	10.47	10.96	12.01	9.39	1970
1971	1.86	5.44	1.93	2.10	6.80	1.72	4.97	7.18	2.48	6.12	3.76	1.66	46.02	10.63	10.83	13.87	12.36	1971
1972	2.45	5.27	2.27	3.99	4.78	11.53	3.43	2.82	1.27	3.56	6.05	4.55	51.97	9.38	11.04	17.78	10.88	1972
1973	2.26	2.68	2.97	4.19	3.39	2.11	2.68	4.41	1.58	1.71	0.97	6.03	34.98	9.49	10.55	9.20	4.26	1973
1974	2.66	0.95	4.21	2.26	4.37	3.40	1.15	5.77	4.39	1.13	1.24	4.43	35.96	9.64	10.84	10.32	6.76	1974
1975	3.09	1.56	5.33	2.13	4.71	2.15	7.16	3.54	12.36	2.38	2.05	4.04	50.50	9.08	12.17	12.85	16.79	1975
1976	3.56	1.55	2.51	1.17	3.57	1.21	4.54	2.13	7.23	7.76	0.85	1.99	38.07	9.15	7.25	7.88	15.84	1976
1977	1.50	0.66	2.17	2.66	1.73	3.28	4.06	4.74	0.32	5.35	4.81	4.86	36.14	4.15	6.56	12.08	10.48	1977
1978	7.11	0.42	4.48	1.38	5.13	2.43	4.28	5.85	1.01	1.16	2.31	4.00	39.56	12.39	10.99	12.56	4.48	1978
1979	6.64	5.62	2.45	1.88	3.55	2.99	3.43	5.41	6.64	5.54	2.33	0.85	47.33	16.26	7.88	11.83	14.51	1979
1980	2.85	1.16	5.04	3.28	2.64	1.68	3.86	1.11	1.90	2.59	2.56	0.65	29.32	4.86	10.96	6.65	7.05	1980
1981	0.38	2.82	1.49	2.63	3.42	2.55	5.69	3.02	1.94	3.64	0.29	2.80	30.67	3.85	7.54	11.26	5.87	1981
1982	2.27	3.33	2.64	3.19	5.11	5.41	2.98	2.68	1.71	1.75	2.96	1.74	35.77	8.40	10.94	11.07	6.42	1982
1983	1.69	3.09	4.84	6.88	4.62	7.09	1.78	3.11	2.90	4.87	5.09	5.91	51.87	6.52	16.34	11.98	12.86	1983
1984	1.71	3.43	6.14	3.71	3.80	2.01	4.09	2.30	2.51	3.18	3.66	1.19	37.73	11.05	13.65	8.40	9.35	1984
1985	2.11	3.07	1.88	0.03	5.79	2.05	2.91	2.35	6.67	3.85	4.47	0.68	35.86	6.37	7.70	7.31	14.99	1985
1986	2.38	3.49	0.74	1.98	0.75	1.29	3.79	5.33	0.60	2.01	5.23	4.98	32.57	6.55	3.47	10.41	7.84	1986
1987	4.90	2.11	1.54	2.28	2.54	3.90	2.59	2.07	5.11	2.53	4.49	2.57	36.63	11.99	6.36	8.56	12.13	1987
1988	3.14	2.52	2.27	2.00	4.50	0.95	3.74	2.39	1.85	1.75	5.33	1.30	31.74	8.23	8.77	7.08	8.93	1988
1989	2.49	2.80	4.30	3.50	7.77	6.02	5.66	1.15	6.68	5.48	2.37	2.10	50.32	6.59	15.57	12.83	14.53	1989
1990	2.95	1.30	2.57	4.09	5.20	3.14	3.78	6.74	0.87	3.30	2.17	4.73	40.84	6.35	11.86	13.66	6.34	1990
1991	2.90	0.83	4.42	1.39	1.57	1.27	3.76	2.03	3.50	2.03	0.85	5.07	29.62	8.46	7.38	7.06	6.38	1991
1992	2.78	2.23	3.48	2.55	3.41	2.35	5.34	2.48	3.49	2.03	3.38	2.86	36.38	10.08	9.44	10.17	8.90	1992
1993	2.90	2.27	6.82	3.62	3.40	1.73	1.36	3.87	3.68	2.62	4.76	4.38	41.41	8.03	13.84	6.96	11.06	1993
1994	4.28	4.20	8.45	1.58	1.56	1.59	3.61	4.35	2.84	1.19	1.57	2.35	37.57	12.86	11.59	9.55	5.60	1994
1995	3.22	1.71	2.14	1.89	4.19	2.42	4.03	0.88	3.73	8.65	4.77	2.17	39.80	7.28	8.22	7.33	17.15	1995
1996	5.01	1.99	3.60	3.17	4.96	3.14	5.60	2.63	7.79	4.04	3.58	5.51	51.02	9.17	11.73	11.37	15.41	1996
1997	2.55	2.43	4.15	2.41	3.04	2.94	1.14	3.51	1.59	3.72	4.60	1.74	33.82	10.49	9.60	7.59	9.91	1997
1998	5.43	5.23	5.40	3.96	4.05	4.42	1.79	0.59	1.83	0.59	0.91	1.74	35.94	12.40	13.41	6.80	3.33	1998
1999	5.42	2.54	3.87	2.09	1.28	2.26	1.01	5.02	10.27	2.16	1.82	2.49	40.23	9.70	7.24	8.29	14.25	1999
2000	3.66	2.06	3.98	5.13	3.08	4.93	5.51	3.77	4.91	0.02	1.60	2.01	40.66	8.21	12.19	14.21	6.53	2000
2001	2.22	1.83	3.88	1.68	3.71	4.69	4.78	2.98	1.41	0.69	0.55	1.53	29.95	6.06	9.27	12.45	2.65	2001
2002	1.32	0.47	3.37	3.47	2.17	3.81	2.20	1.63	2.10	5.00	4.34	4.45	34.33	3.32	9.01	7.64	11.44	2002
2003	2.41	6.98	4.20	2.55	7.06	7.87	5.76	4.65	6.87	3.93	4.23	4.32	60.83	13.84	13.81	18.28	15.03	2003
2004	1.35	2.28	2.09	3.84	2.98	4.60	6.98	5.09	3.99	1.74	4.50	3.05	42.49	7.95	8.91	16.67	10.23	2004
2005	3.31	1.63	4.46	4.33	4.61	2.87	6.06	2.33	0.11	9.41	1.92	3.34	44.38	7.99	13.40	11.26	11.44	2005
2006	3.25	2.46	0.05	3.10	2.21	14.02	3.56	1.03	6.31	5.06	5.16	1.56	47.77	9.05	5.36	18.61	16.53	2006
2007	2.46	2.22	3.19	4.17	1.75	1.38	2.40	3.47	0.60	6.55	1.46	3.28	32.93	6.24	9.11	7.25	8.61	2007
2008	1.37	4.17	2.80	4.92	10.66	4.80	3.60	1.23	6.41	1.13	2.43	2.97	46.49	8.82	18.38	9.63	9.97	2008
2009	2.68	0.35	1.97	4.22	8.05	5.86	1.07	2.46	3.31	5.71	4.43	6.79	46.90	6.00	14.24	9.39	13.45	2009
2010	1.56	2.72	3.55	1.50	2.40	1.87	5.17	2.59	6.02	3.40	2.22	1.78	34.78	11.07	7.45	9.63	11.64	2010
2011	2.25	2.12	4.40	3.20	1.70	1.68	3.03	8.92	8.84	3.91	1.94	4.90	46.89	6.15	9.30	13.63	14.69	2011
2012	2.19	2.33	1.02	1.92	3.28	2.38	2.81	2.78	4.29	5.82	0.60	3.03	32.45	9.42	6.22	7.97	10.71	2012
2013	2.53	1.67	2.80	2.76	2.82	9.97	4.43	1.34	1.22	6.25	2.92	5.53	44.24	7.23	8.38	15.74	10.39	2013
2014	2.58	4.02	4.26	6.47	4.96	3.31	4.68	3.39	1.11	3.49	2.64	3.50	44.41	12.13	15.69	11.38	7.24	2014
2015	3.73	1.68	4.04	3.41	1.92	11.94	5.01	1.16	2.15	3.04	2.10	4.84	45.02	8.91	9.37	18.11	7.29	2015
2016	2.68	3.79	1.16	2.05	5.65	3.68	3.13	2.79	2.50	0.90	0.76	2.61	31.70	11.31	8.86	9.60	4.16	2016
2017	2.75	0.68	3.19	2.62	5.55	1.13	9.15	4.58	1.43	2.02	2.00	0.50	35.60	6.04	11.36	14.86	5.45	2017
2018	0.94	4.79	1.92	3.59	8.73	5.21	9.73	5.19	9.73	3.06	7.57	5.82	66.28	6.23	14.24	20.13	20.36	2018
2019	3.30	3.52	4.00	2.24	4.97	4.27	6.49	1.99	0.25	6.66	1.37	3.28	42.34	12.64	11.21	12.75	8.28	2019
2020	2.79	3.21	2.31	6.30	2.49	3.51	6.51	8.73	5.53	4.86	6.14	4.96	57.34	9.28	11.10	18.75	16.53	2020
2021	1.93	4.66	3.80	2.20	3.77	5.51	4.24	9.07	4.03	3.27	0.98	0.63	44.09	11.55	9.77	18.82	8.28	2021
2022	3.68	2.33	2.77	3.82	6.36	2.96	7.61	2.42	2.27	2.78	2.65	3.86	43.51	6.64	12.95	12.99	7.70	2022
2023	1.65	2.08	1.60	3.55	1.34	2.10	6.46	3.71	3.60	0.65	2.51	6.43	35.68	7.59	6.49	12.27	6.76	2023
2024	5.88	1.41	4.89	2.06	4.30	1.15	4.82	4.58	2.31	1.48	1.81	2.88	37.57	13.72	11.25	10.55	5.60	2024
2025	1.95	2.84	2.49	3.03	7.73	5.48	3.54	0.20	3.72	1.89	0.92	1.77	35.56	7.67	13.25	9.22	6.53	2025
2026	3.16	2.57	1.90	1.55	2.85	1.68	0.00						13.71	7.50	6.30			2026
YEAR	JAN	FEB	MAR	APR	MAY	JUN	JUL	AUG	SEP	OCT	NOV	DEC	CALENDAR YEAR	WINTER (Dec-Feb)	SPRING (Mar-May)	SUMMER (Jun-Aug)	AUTUMN (Sept-Nov)	YEAR
Average Precip. 1871-2025	3.08	2.83	3.50	3.15	3.80	3.82	4.29	4.07	3.59	3.07	2.75	3.13	41.08	9.06	10.45	12.19	9.41	Average Precip. 1871-2025
Percent of Average Precip. 1871-2025	7.5%	6.9%	8.5%	7.7%	9.2%	9.3%	10.4%	9.9%	8.7%	7.5%	6.7%	7.6%	100%	22.0%	25.4%	29.7%	22.9%	Percent of Average Precip. 1871-2025
30-Year Average Precip. 1991-2020	2.86	2.61	3.50	3.20	3.94	4.20	4.32	3.25	3.93	3.66	2.90	3.41	41.79	8.88	10.64	11.77	10.49	30-Year Average Precip. 1991-2020
Percent of 30-Year Avg. Precip. 1991-2020																		

MONTHLY PRECIPITATION CHARTS

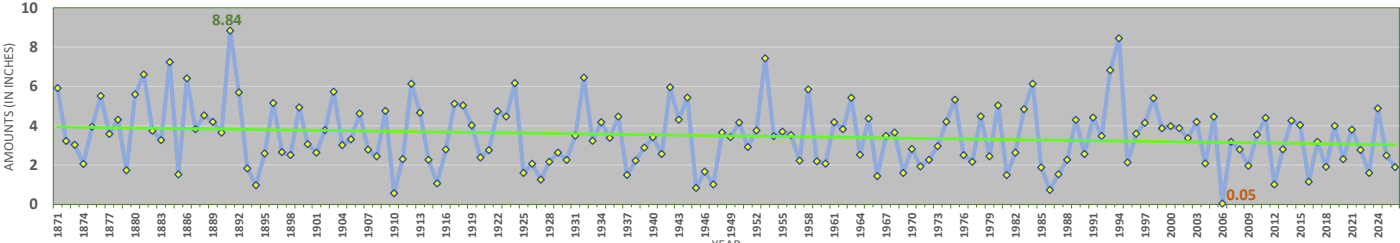
Washington, District of Columbia - January Precipitation (including Trendline and Extremes) 1871-2026



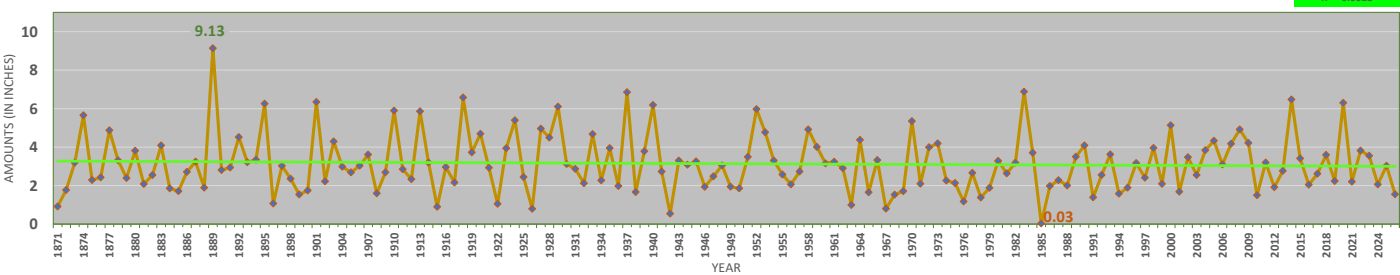
Washington, District of Columbia - February Precipitation (including Trendline and Extremes) 1871-2026



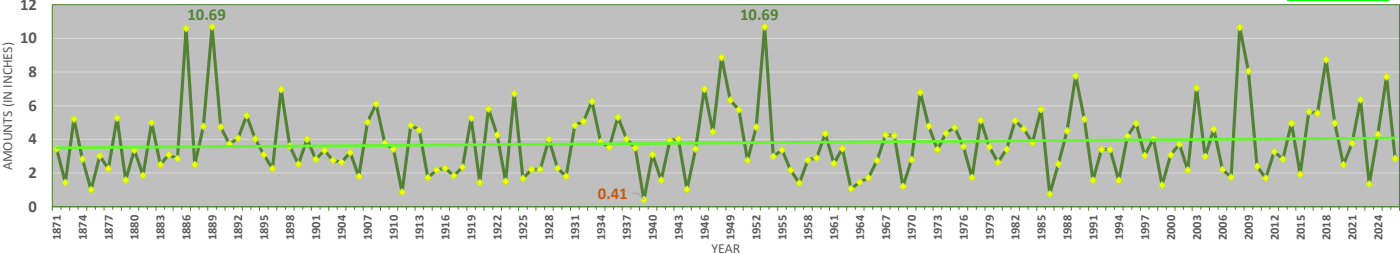
Washington, District of Columbia - March Precipitation (including Trendline and Extremes) 1871-2026



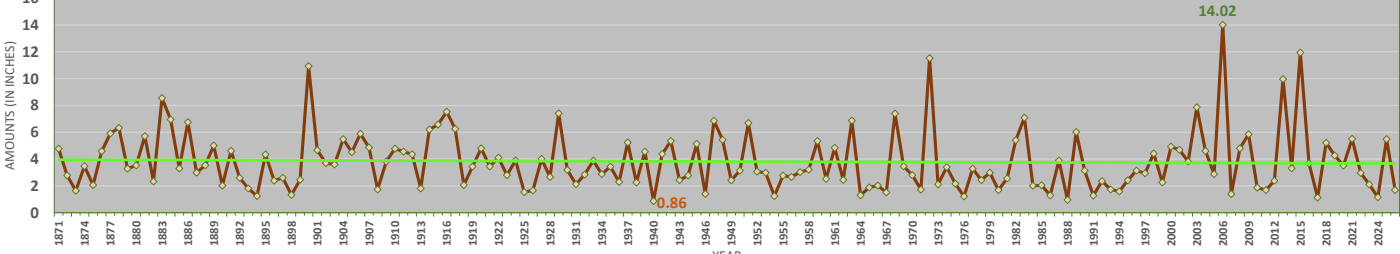
Washington, District of Columbia - April Precipitation (including Trendline and Extremes) 1871-2026



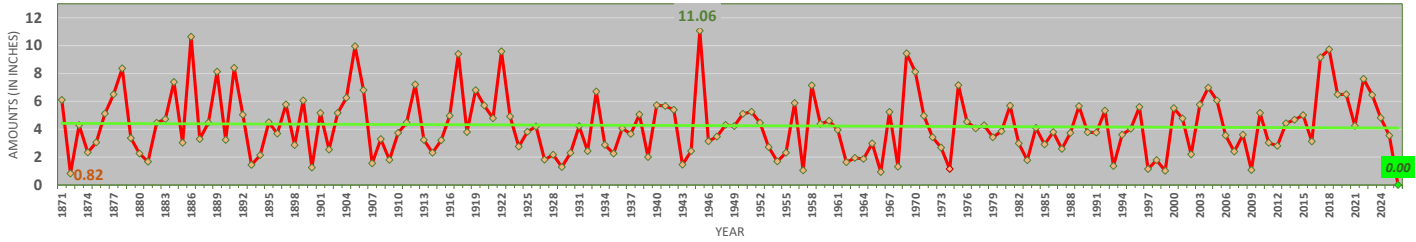
Washington, District of Columbia - May Precipitation (including Trendline and Extremes) 1871-2026



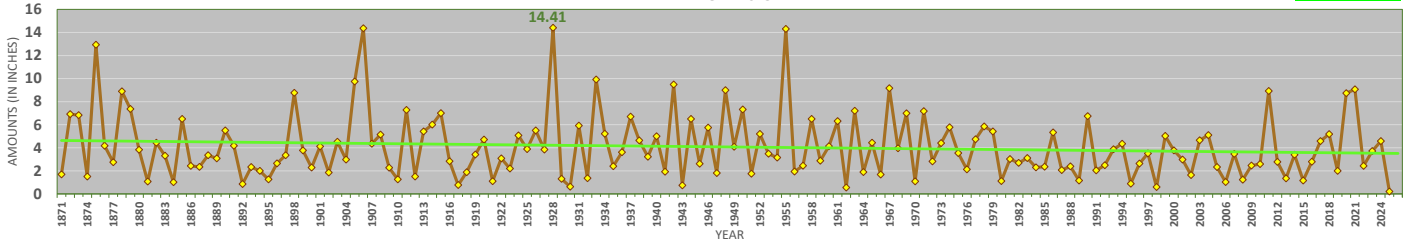
Washington, District of Columbia - June Precipitation (including Trendline and Extremes) 1871-2026



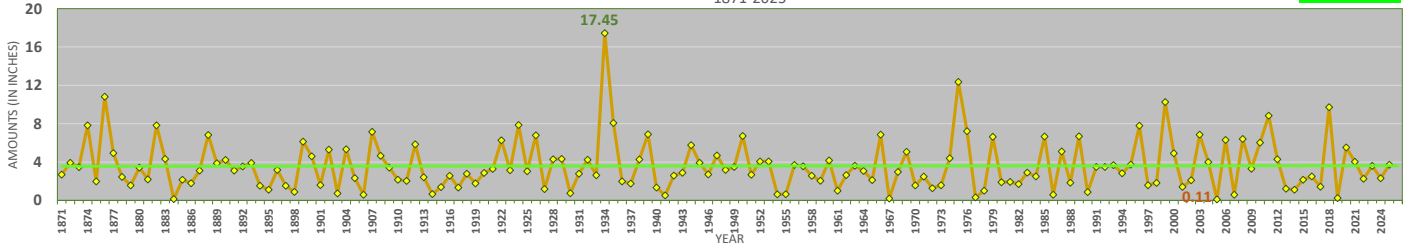
Washington, District of Columbia - July Precipitation
(including Trendline and Extremes)
1871-2026



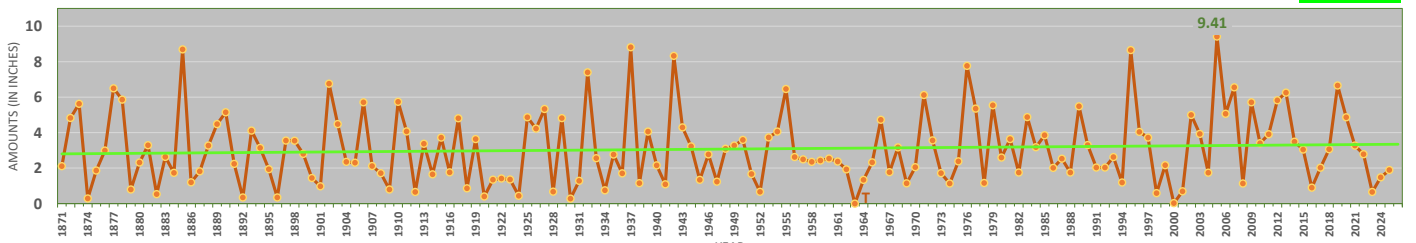
Washington, District of Columbia - August Precipitation
(including Trendline and Extremes)
1871-2025



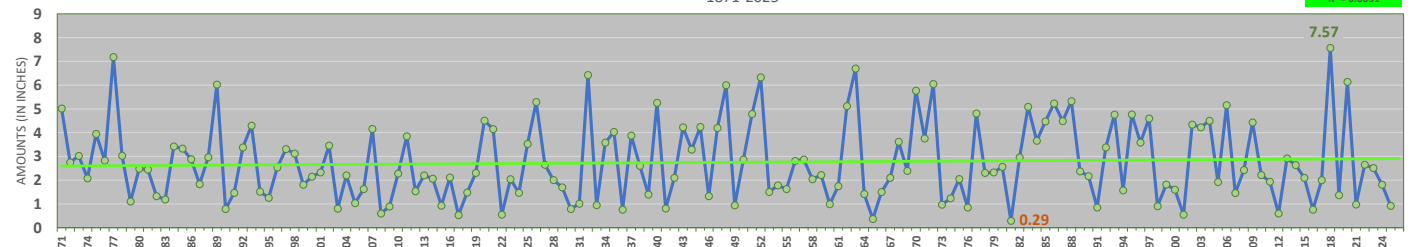
Washington, District of Columbia - September Precipitation
(including Trendline and Extremes)
1871-2025



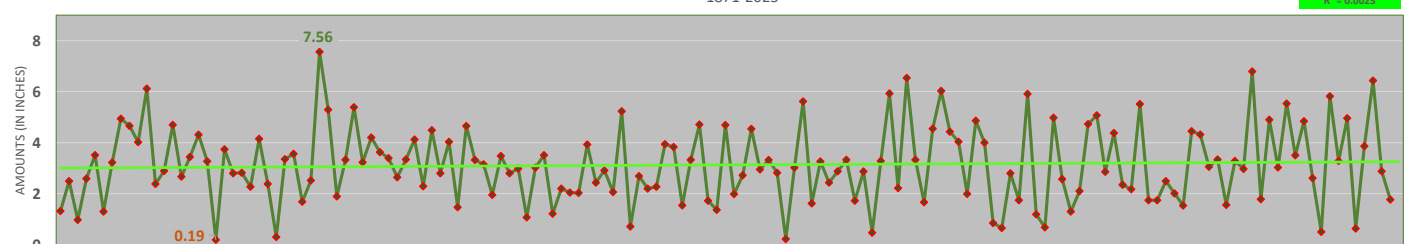
Washington, District of Columbia - October Precipitation
(including Trendline and Extremes)
1871-2025



Washington, District of Columbia - November Precipitation
(including Trendline and Extremes)
1871-2025

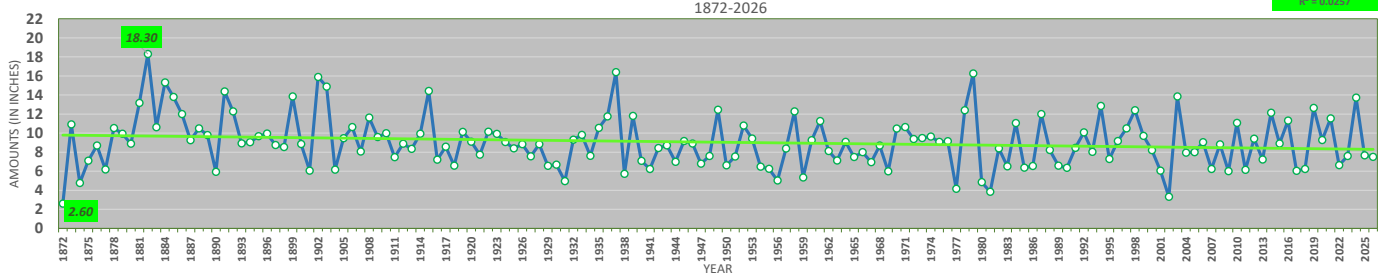


Washington, District of Columbia - December Precipitation
(including Trendline and Extremes)
1871-2025

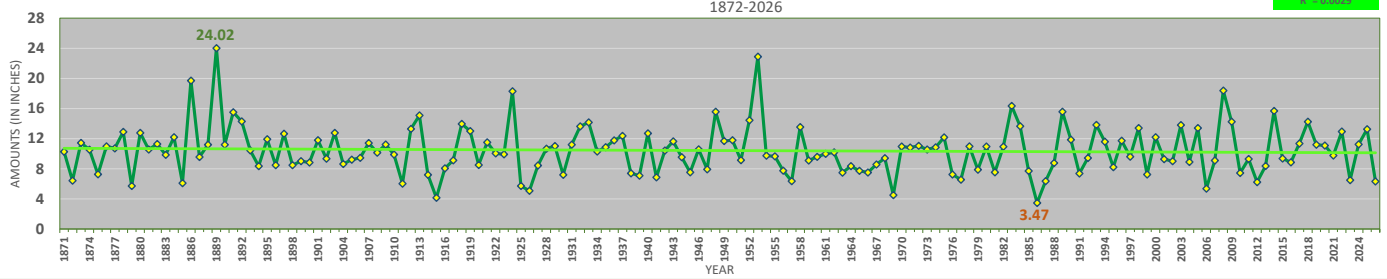


SEASONAL PRECIPITATION CHARTS

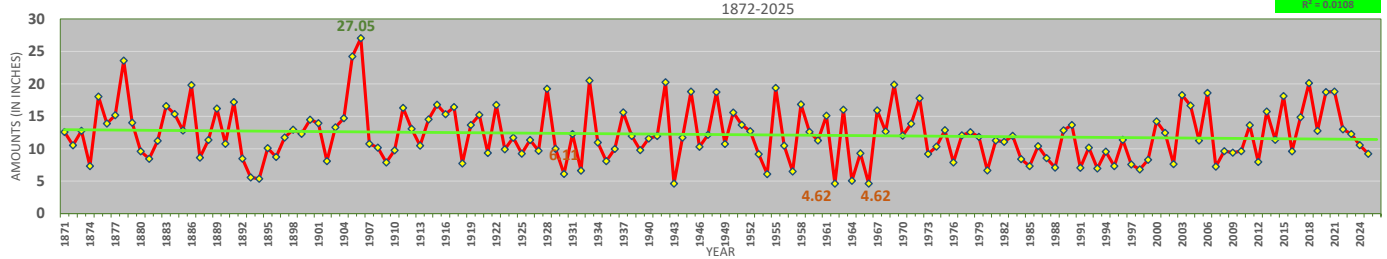
Washington, District of Columbia - Winter Precipitation (December-February)
(including Trendline and Extremes)



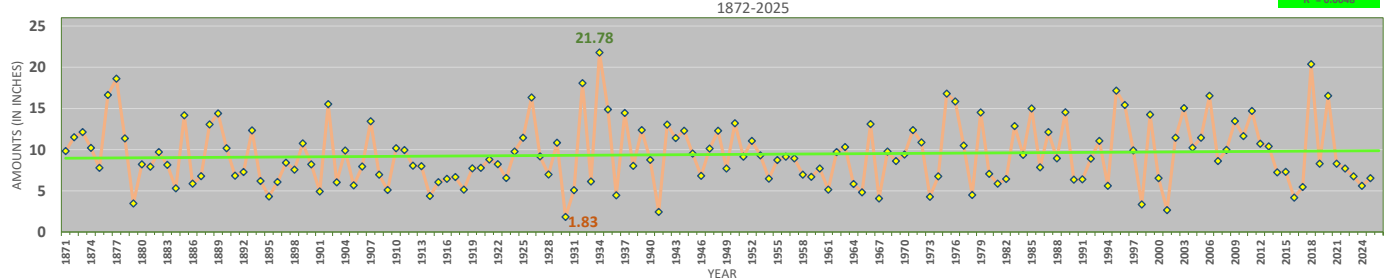
Washington, District of Columbia - Spring Precipitation (March-May)
(including Trendline and Extremes)



Washington, District of Columbia - Summer Precipitation (June-August)
(including Trendline and Extremes)

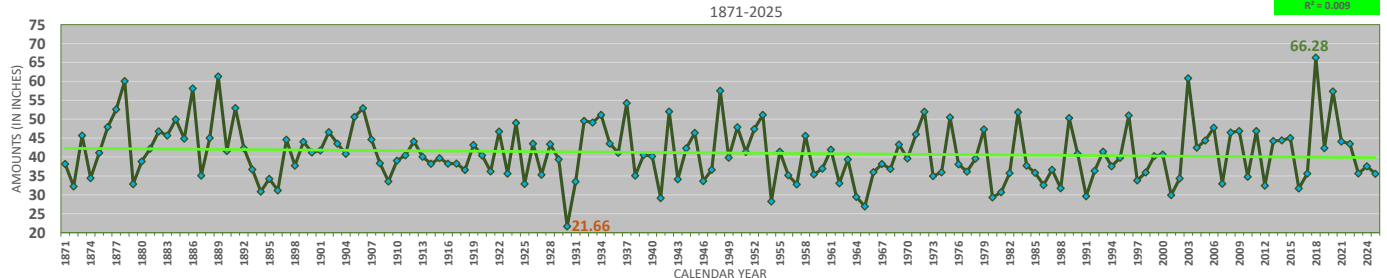


Washington, District of Columbia - Autumn Precipitation (September-November)
(including Trendline and Extremes)



CALENDAR-YEAR PRECIPITATION CHART

Washington, District of Columbia - Calendar-Year Precipitation
(including Trendline and Extremes)



Data through 7/1/2026, Updated 7/2/2026

- 1) Chart Trendlines are shown in bright green and are Linear, with associated equation and R-squared value shown.
- 2) Extreme values are shown in bold text: Maxima in green, Minima in brown.

STATION LOCATION	PERIOD OF RECORD
1719 G St. NW, District of Columbia	1/1/1871 - 8/14/1888
1744 G St. NW, District of Columbia	8/15/1888 - 3/21/1889
2416 M St NW, District of Columbia	3/22/1889 - 6/30/1945
Ronald Reagan Washington National Airport, Arlington, VA	7/1/1945 - Present

STATION DATA SOURCE: NOAA, NCDC, "Local Climatological Data, Washington, DC," 1957;

NOAA, NCDC, "2017 Local Climatological Data, Annual Summary, Washington, DC, KDCA."

STATION NOTES: 1) 8" rain gauge 11/1/1870-3/21/1889 and 7/1/1941-1/31/1998.

2) Automated Surface Observation System (ASOS) implemented at DCA on 2/1/1998.