

CHURCHVILLE - HARFORD COUNTY AIRPORT (0W3) - CHURCHVILLE, MARYLAND

AWOS Station Elevation: 409 feet/125 meters)

Period of Record: 2024-Present

AVERAGE MAXIMUM TEMPERATURE (°F)

Year	Jan	Feb	Mar	Apr	May	Jun	Jul	Aug	Sep	Oct	Nov	Dec	Annual	Winter (Dec-Feb)	Spring (Mar-May)	Summer (Jun-Aug)	Autumn (Sep-Nov)
2024						84.3	86.6	82.2	75.9	69.6	58.3	43.4				84.4	67.9
2025	34.5	42.0	58.3	64.1	73.5	82.2	87.2	79.5	76.6	64.7	48.9	39.6	62.6	40.0	65.3	83.0	63.4
2026	35.3	37.7	55.6	67.0	71.1									37.5	64.6		
Average	34.9	39.9	57.0	65.6	72.3	83.3	86.9	80.9	76.3	67.2	53.6	41.5		38.8	64.9	83.7	65.7
Maximum	35.3	42.0	58.3	67.0	73.5	84.3	87.2	82.2	76.6	69.6	58.3	43.4		40.0	65.3	84.4	67.9
Minimum	34.5	37.7	55.6	64.1	71.1	82.2	86.6	79.5	75.9	64.7	48.9	39.6		37.5	64.6	83.0	63.4

AVERAGE MINIMUM TEMPERATURE (°F)

Year	Jan	Feb	Mar	Apr	May	Jun	Jul	Aug	Sep	Oct	Nov	Dec	Annual	Winter (Dec-Feb)	Spring (Mar-May)	Summer (Jun-Aug)	Autumn (Sep-Nov)
2024						64.6	69.7	64.4	58.7	46.9	40.5	29.6				66.2	48.7
2025	22.0	27.4	37.6	46.2	54.8	64.5	70.4	61.6	59.4	46.8	36.1	25.5	46.0	26.3	46.2	65.5	47.4
2026	21.5	25.0	38.9	46.0	53.0									24.0	46.0		
Average	21.8	26.2	38.3	46.1	53.9	64.6	70.1	63.0	59.1	46.9	38.3	27.6		25.2	46.1	65.9	48.1
Maximum	22.0	27.4	38.9	46.2	54.8	64.6	70.4	64.4	59.4	46.9	40.5	29.6		26.3	46.2	66.2	48.7
Minimum	21.5	25.0	37.6	46.0	53.0	64.5	69.7	61.6	58.7	46.8	36.1	25.5		24.0	46.0	65.5	47.4

AVERAGE MEAN TEMPERATURE (°F)

Year	Jan	Feb	Mar	Apr	May	Jun	Jul	Aug	Sep	Oct	Nov	Dec	Annual	Winter (Dec-Feb)	Spring (Mar-May)	Summer (Jun-Aug)	Autumn (Sep-Nov)
2024						74.4	78.2	73.3	67.3	58.2	49.4	36.5				75.3	58.3
2025	28.3	34.7	48.0	55.1	62.8	73.3	78.8	70.5	68.0	55.8	42.5	32.6	54.2	33.2	55.3	74.2	55.4
2026	28.4	31.3	47.3	56.5	62.0									30.8	55.3		
Average	28.4	33.0	47.7	55.8	62.4	73.9	78.5	71.9	67.7	57.0	46.0	34.6		45.1	55.3	74.8	56.9
Maximum	28.4	34.7	48.0	56.5	62.8	74.4	78.8	73.3	68.0	58.2	49.4	36.5		33.2	55.3	75.3	58.3
Minimum	28.3	31.3	47.3	55.1	62.0	73.3	78.2	70.5	67.3	55.8	42.5	32.6		30.8	55.3	74.2	55.4

Updated 6/9/2026

DATA SOURCE: Iowa State University - Iowa Environmental Mesonet

https://mesonet.agron.iastate.edu/sites/locate.php?network=MD_ASOS

NOTES: 1) **Bold red** values indicate extreme maxima, **bold blue** values indicate extreme minima.

2) AWOS stations only report data every 10-20 minutes so the averages, above, likely do not reflect the absolute highest Maximum and lowest Minimum Temperatures.

CHURCHVILLE - HARFORD COUNTY AIRPORT (0W3)

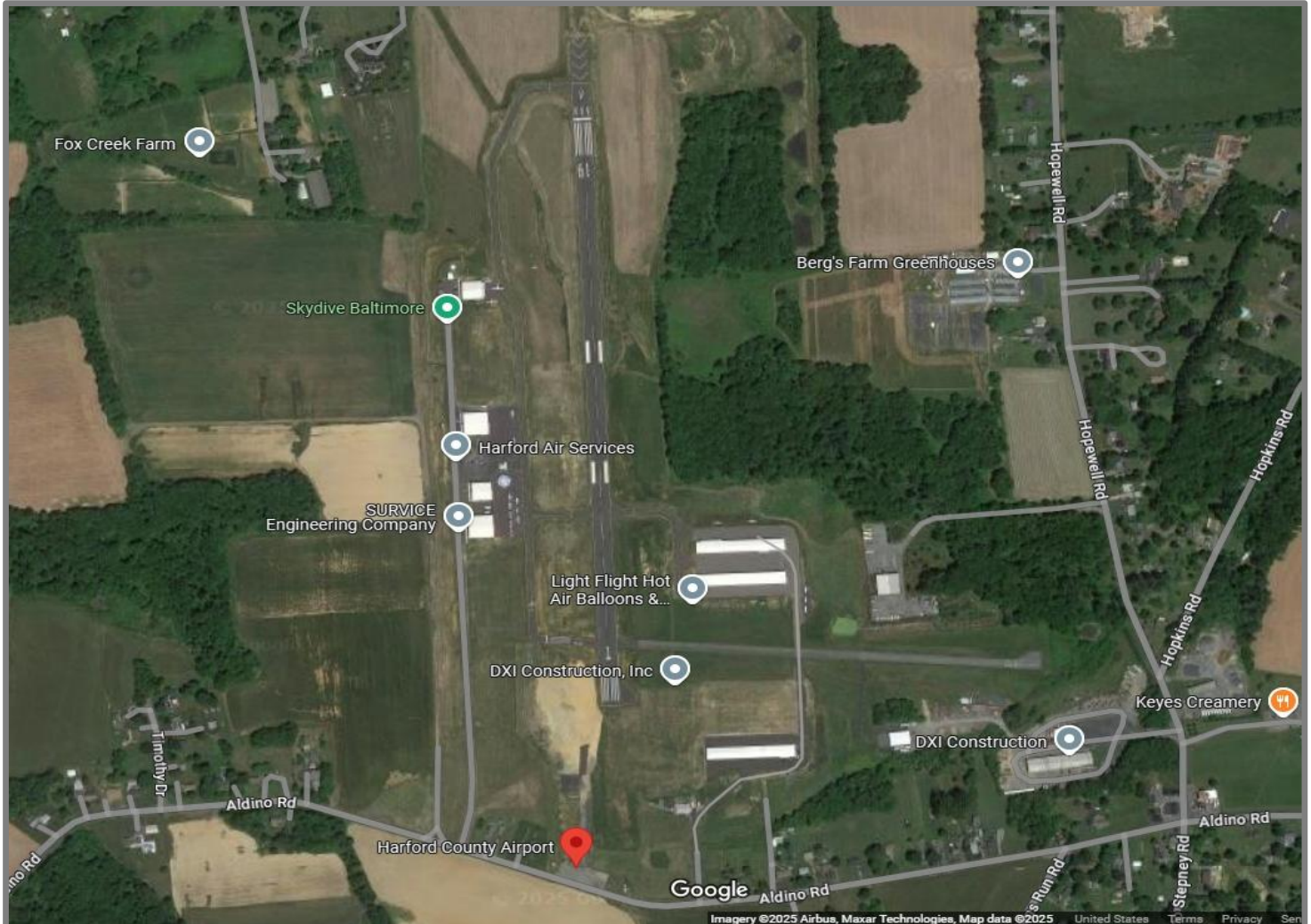


Image from Google Maps