

BALTIMORE-MARTIN STATE AIRPORT (MTN) - MIDDLE RIVER, MARYLAND																	
AWOS Station Elevation: 23 feet/7 meters																	
Period of Record: 1970-Present																	
AVERAGE MAXIMUM TEMPERATURE (°F)																	
Year	Jan	Feb	Mar	Apr	May	Jun	Jul	Aug	Sep	Oct	Nov	Dec	Annual	Winter (Dec-Feb)	Spring (Mar-May)	Summer (Jun-Aug)	Autumn (Sep-Nov)
1970							84.0	85.4	81.3	68.2	54.4	45.0					68.0
1971	35.9	51.5	47.7	62.1	69.4	82.1	83.4	80.8	77.7	67.9	51.9	47.5	63.2	44.1	59.7	82.1	65.8
1972	41.6	39.6	49.3	60.7	71.3	74.5	84.2	82.7	77.5	81.5	50.9	47.0	61.7	42.9	60.4	82.5	63.9
1973	42.6	39.8	54.3	59.9	68.0	82.0	85.0	84.9	79.4	68.2	57.5	43.7	63.8	43.1	60.7	84.0	68.4
1974	43.9	42.4	51.9	63.0	71.5	76.4	84.2	82.9	74.8	62.3	54.5	44.3	62.7	43.3	62.1	81.2	63.9
1975	43.5	43.0	48.6	57.7	72.9	80.0	83.4	84.0	72.3	67.8	59.3	42.7	62.9	43.6	59.7	82.5	66.4
1976	35.0	51.7	53.6	65.8	70.0	82.3	82.5	81.5	75.5	59.7	49.0	39.3	62.2	43.1	63.1	82.1	61.4
1977	30.4	44.4	57.4	67.1	75.6	79.0	86.5	84.4	77.7	63.8	53.7	42.0	63.5	38.1	66.7	83.3	65.1
1978	34.2	33.8	48.3	62.3	69.8	80.5	80.9	84.4	77.0	65.2	55.6	47.6	61.6	36.7	60.1	81.9	65.9
1979	38.3	33.2	55.0	59.6	72.0	76.9	82.8	82.4	76.3	63.2	58.5	47.3	62.1	39.7	62.2	80.7	66.0
1980	40.2	40.2	49.5	63.8	75.1	79.7	87.0	86.8	79.7	64.1	51.2	43.8	63.4	42.6	62.8	84.5	65.0
1981	37.5	47.6	49.5	65.1	71.4	81.8	84.6	81.2	75.5	62.6	54.3	42.1	62.7	43.0	62.0	82.5	64.1
1982	36.3	41.6	50.2	60.9	74.7	77.9	84.7	80.9	73.7	64.7	56.3	49.8	62.6	40.0	61.9	81.2	64.9
1983	44.0	43.8	52.8	60.2	70.2	81.7	88.0	85.7	79.4	66.9	57.2	40.6	64.2	45.9	61.1	85.1	67.8
1984	36.3	48.1	45.8	60.9	70.7	83.3	83.1	85.1	75.3	71.7	54.4	51.9	63.9	41.6	59.2	83.8	67.1
1985	35.9	44.9	55.2	69.6	74.7	79.7	84.9	82.1	79.6	67.9	57.4	41.8	64.5	44.2	66.5	82.2	68.3
1986	40.1	37.8	52.8	61.7	75.7	82.7	86.5	81.1	76.2	67.1	51.4	45.0	63.2	39.9	63.4	83.4	64.9
1987	39.0	41.4	55.0	61.4	73.5	83.0	88.7	83.9	78.6	62.4	56.1	45.0	63.9	41.8	63.3	85.2	65.1
1988	35.6	42.7	53.7	60.8	72.6	82.9	86.8	86.0	79.7	65.0	55.2	42.9	63.0	41.2	62.3	85.7	63.7
1989	44.4	41.6	50.2	61.2	70.7	81.7	83.7	81.9	76.7	68.5	53.4	32.0	62.2	43.3	60.7	82.4	66.2
1990	47.7	49.9	55.3	62.8	69.7	81.5	85.2	81.8	74.9	68.7	56.7	47.8	65.2	43.2	62.6	82.8	66.8
1991	40.9	46.7	52.1	62.6	78.2	81.7	84.7	84.0	75.4	64.7	52.2	45.6	64.1	45.2	64.3	83.5	64.1
1992	42.6	43.9	48.0	59.4	68.3	76.7	82.7	78.5	72.3	60.9	51.1	43.2	60.6	44.0	58.6	79.3	61.4
1993	42.5	37.6	44.7	59.3	72.7	79.6	85.7	82.8	74.9	62.5	53.5	41.4	61.4	41.1	58.9	82.7	63.6
1994	32.1	39.0	48.4	65.9	69.1	84.1	86.8	79.7	75.2	64.0	57.7	47.6	62.4	37.5	61.1	83.5	65.6
1995	43.0	37.5	53.6	61.4	70.4	78.6	86.0	84.6	76.1	67.7	48.2	38.5	62.1	42.7	61.8	83.0	64.0
1996	35.7	40.0	45.9	61.4	67.8	81.7	81.7	80.8	75.8	63.8	47.2	45.1	60.6	38.0	58.4	81.4	62.3
1997	39.7	48.0	52.8	59.8	69.7	79.5	86.1	82.3	74.8	66.9	50.7	45.1	62.9	44.3	60.8	82.6	64.1
1998	47.0	47.4	52.0	64.1	74.0	79.4	84.9	83.9	80.1	65.5	55.9	49.2	65.3	46.5	63.4	82.8	67.2
1999	43.0	45.3	50.6	62.8	73.7	79.8	88.2	83.4	75.4	63.4	56.8	46.1	64.0	45.8	62.4	83.8	65.2
2000	39.6	44.7	57.3	61.3	73.5	80.9	80.0	80.5	73.7	66.7	52.5	37.3	62.3	43.5	64.0	80.5	64.3
2001	40.4	45.1	48.4	63.2	72.4	81.3	81.9	85.1	74.8	66.8	62.5	50.3	64.3	40.9	61.3	82.8	68.0
2002	47.7	48.5	53.9	65.6	71.4	82.0	86.6	86.2	79.4	63.3	52.2	41.6	64.9	48.8	63.6	84.9	65.0
2003	35.7	37.2	52.7	61.1	66.2	77.6	84.5	85.4	78.0	65.5	59.8	45.7	62.5	38.1	60.0	82.5	67.8
2004	38.0	45.6	44.9	64.9	68.5	81.0	85.1	83.2	79.7	62.8	56.4	45.6	64.5	43.1	66.0	83.1	66.3
2005	43.0	44.0	48.6	64.9	68.6	82.0	86.3	85.3	82.4	68.7	57.7	41.1	64.2	44.4	60.7	84.5	64.7
2006	51.5	44.2	54.0	66.7	73.5	79.8	87.3	86.4	73.9	64.2	57.6	52.0	65.9	45.6	64.7	84.5	65.2
2007	47.2	38.1	55.3	60.8	76.4	82.3	86.4	88.9	82.0	74.3	55.1	45.7	65.9	45.8	64.2	85.2	70.5
2008	44.5	46.2	54.5	65.4	71.4	85.8	88.2	83.7	79.5	66.4	52.8	46.4	65.4	45.5	63.7	85.9	66.2
2009	37.4	46.9	51.1	64.5	72.5	79.7	84.6	86.0	75.0	63.9	58.0	43.9	63.6	43.6	62.7	83.4	65.6
2010	40.7	38.8	57.8	68.3	75.7	87.4	90.1	85.8	80.4	67.4	56.4	39.1	65.7	41.1	67.3	87.8	68.0
2011	37.3	46.4	52.6	65.3	76.1	84.7	90.7	84.1	76.2	65.2	59.0	51.2	65.7	41.0	64.7	86.5	66.8
2012	48.0	49.6	60.7	64.9	77.1	83.5	89.4	85.6	78.0	66.7	52.9	50.3	67.2	49.6	67.6	86.1	65.9
2013	44.7	42.1	48.6	64.5	72.7	82.9	87.1	81.8	77.2	68.2	52.9	45.4	64.0	45.7	61.9	84.0	67.2
2014	36.4	42.6	48.9	62.8	76.3	82.1	84.6	82.1	78.2	67.4	53.6	46.5	63.5	41.5	62.7	82.9	66.4
2015	39.3	34.3	47.9	64.3	78.2	82.0	85.7	84.3	80.8	65.1	60.4	56.5	64.9	40.0	63.5	84.0	68.8
2016	41.3	44.9	59.5	64.0	69.9	83.7	88.3	87.9	79.7	69.0	60.7	46.5	66.3	47.6	64.5	86.6	69.8
2017	45.2	52.7	53.0	69.0	71.1	84.4	87.2	82.1	79.0	70.9	55.9	43.3	66.2	48.2	64.4	84.6	68.6
2018	40.8	49.0	48.4	60.8	77.2	81.7	86.9	86.6	79.2	68.4	51.0	47.7	64.8	44.4	62.2	85.1	66.2
2019	43.0	45.6	51.3	68.7	75.4	83.5	89.7	85.7	81.1	69.1	54.3	45.8	66.1	45.4	65.2	86.3	68.2
2020	46.2	47.6	57.8	60.3	62.5	82.5	89.4	84.5	78.0	67.1	60.2	45.9	64.7	46.5	65.8	85.5	67.8
2021	42.7	40.7	57.2	65.2	72.9	81.0	86.7	79.2	79.2	71.0	54.6	51.2	65.7	43.1	65.1	84.6	68.3
2022	38.5	48.1	55.7	61.9	73.3	81.0	86.2	86.1	79.0	64.6	57.8	45.1	64.8	45.9	63.6	84.4	67.1
2023	48.6	50.1	54.1	68.0	71.4	78.9	86.1	83.9	78.2	68.1	54.7	49.3	66.0	47.9	64.5	83.0	67.0
2024	43.3	48.1	57.1	64.9	73.6	85.0	87.6	82.6	78.3	69.8	59.2	44.9	66.2	46.9	65.2	85.1	69.1
2025	37.9	44.1	58.7	65.8	72.9			81.3	78.6	67.1	57.9	44.8		42.3	65.8		67.9
2026	41.4	44.2	58.0	68.5	72.7									43.5	66.4		
Year	Jan	Feb	Mar	Apr	May	Jun	Jul	Aug	Sep	Oct	Nov	Dec	Annual	Winter	Spring	Summer	Autumn
Average	40.9	43.8	52.5	63.4	72.6	81.3	85.7	83.7	77.3	66.0	55.2	45.3	63.9	43.3	62.8	83.6	66.2
Maximum	51.5	52.7	60.7	69.6	78.5	87.4	90.7	87.9	82.4	74.3	62.5	56.5	67.2	49.6	67.6	87.8	70.5
Minimum	30.4	33.2	44.7	57.7	66.2	74.5	80.0	78.5	72.3	59.7	47.2	32.0	60.6	36.7	58.4	79.3	61.4

AVERAGE MINIMUM TEMPERATURE (°F)																	
Year	Jan	Feb	Mar	Apr	May	Jun	Jul	Aug	Sep	Oct	Nov	Dec	Annual	Winter (Dec-Feb)	Spring (Mar-May)	Summer (Jun-Aug)	Autumn (Sep-Nov)
1970							71.7	71.4	66.5	55.2	44.2	36.0					55.3
1971	26.3	41.0	36.6	48.4	56.0	69.8	71.0	67.9	65.5	54.9	40.1	37.6	51.3	34.5	47.0	69.6	63.5
1972	29.8	27.2	36.8	46.3	57.7	64.4	72.4	69.1	62.9	47.3	41.2	37.8	48.1	31.5	48.1	69.6	50.5
1973	29.7	29.0	43.1	49.9	55.5	70.5	71.9	68.7	62.5	52.5	43.6	35.0	51.5	32.1	49.5	71.6	53.5
1974	33.2	29.6	39.0	47.1	57.7	65.1	71.0	70.2	62.0	46.4	43.4	34.7	50.0	32.6	47.9	68.8	50.6
1975	31.6	33.1	36.3	45.4	60.3	68.2	72.0	71.1	61.8	54.2	45.8	33.1	51.1	33.1	47.3	70.4	53.9
1976	27.2	38.6	42.5	50.9	57.1	69.5	70.6	70.6	60.3	46.5	34.3	26.7	49.6	33.0	50.2	70.2	47.0
1977	19.2	30.0	40.7	48.9	57.4	63.4	69.9	69.6	64.8	47.7	43.7	31.8	48.9	25.3	49.0	67.6	52.1
1978	27.4	24.5	35.9	46.9	54.9	64.6	67.6	71.1	60.8	46.6	41.1	33.5	47.9	27.9	45.9	67.7	49.5
1979	29.5	24.5	39.7	46.6	57.4	62.3	68.0	67.9	61.3	47.8	42.7	34.4	48.5	29.2	47.9	66.0	50.6
1980	31.6	28.4	35.0	47.6	57.3	61.8	70.6	71.0	64.3	48.1	38.0	34.3	49.0	31.5	46.7	67.8	50.1
1981	27.0	35.2	35.8	48.8	54												

AVERAGE MEAN TEMPERATURE (°F)																	
Year	Jan	Feb	Mar	Apr	May	Jun	Jul	Aug	Sep	Oct	Nov	Dec	Annual	Winter (Dec-Feb)	Spring (Mar-May)	Summer (Jun-Aug)	Autumn (Sep-Nov)
1970							77.9	78.4	73.9	61.7	49.3	40.5					61.6
1971	31.1	46.3	42.1	55.3	62.7	75.9	77.2	74.4	71.6	61.4	46.0	42.5	57.2	39.3	53.7	75.8	59.7
1972	35.7	33.4	43.0	53.5	64.5	69.5	78.3	75.9	70.2	54.4	46.1	42.4	55.6	37.2	53.4	74.6	56.9
1973	36.1	34.4	48.7	54.9	61.8	76.3	78.4	78.7	71.9	60.4	50.6	39.4	57.5	37.5	55.1	77.8	61.0
1974	38.5	36.0	45.5	55.0	64.6	70.8	77.6	76.6	68.4	54.3	49.0	39.5	56.3	38.0	55.0	75.0	57.3
1975	37.6	38.1	42.5	51.5	66.6	74.1	77.7	77.5	67.1	61.0	49.0	42.5	57.0	38.4	53.5	76.5	60.2
1976	31.1	45.2	48.0	58.3	63.6	75.9	76.5	76.0	67.9	53.1	41.6	33.0	55.9	38.0	56.7	76.2	54.2
1977	24.8	37.2	49.1	58.0	66.5	71.2	78.2	77.0	71.3	55.7	48.7	36.9	56.2	31.7	57.8	75.5	58.6
1978	30.8	29.2	42.1	54.6	62.4	72.6	74.2	77.7	68.9	55.9	48.4	40.5	54.8	32.3	53.0	74.8	57.7
1979	33.9	28.9	47.3	53.1	64.7	69.6	75.4	75.1	68.8	55.5	50.6	40.8	55.3	34.4	55.0	73.4	58.3
1980	35.9	34.3	42.3	55.7	66.2	70.8	78.8	78.9	72.0	56.1	44.6	39.0	56.2	37.0	54.7	76.2	57.6
1981	32.3	41.4	42.7	57.0	62.8	74.3	77.1	73.8	67.9	53.9	47.8	38.1	55.7	37.6	54.1	75.1	56.5
1982	32.1	37.5	44.3	53.3	66.3	70.8	77.5	75.3	66.7	56.9	49.7	44.6	56.2	35.9	54.6	74.5	57.8
1983	39.4	38.9	46.1	53.3	62.0	73.4	79.2	77.8	70.0	59.2	49.2	35.3	57.0	41.0	53.8	76.8	59.5
1984	30.2	41.9	39.6	53.7	63.5	74.9	76.0	77.1	66.5	64.4	46.1	45.4	56.6	35.8	52.3	76.0	59.0
1985	30.9	38.2	47.1	59.3	66.4	72.0	77.0	75.3	70.7	60.1	52.4	35.1	57.0	38.2	57.6	74.7	61.1
1986	34.2	33.4	44.3	54.6	66.8	73.8	78.7	73.9	69.1	59.1	45.0	39.4	56.0	34.2	55.2	75.5	57.7
1987	34.1	34.9	46.4	54.0	64.7	75.0	80.4	76.2	69.7	53.0	48.3	40.3	56.4	36.1	55.0	77.2	57.0
1988	29.0	35.3	45.6	53.0	64.5	73.7	80.0	78.8	66.9	62.7	47.6	37.2	55.4	34.9	54.3	77.5	55.8
1989	37.9	36.0	43.2	52.9	63.1	75.0	76.5	73.3	69.4	59.3	46.3	26.6	55.1	37.0	53.0	75.6	58.3
1990	41.3	42.5	47.1	54.8	62.2	72.9	77.9	74.9	67.6	60.5	47.7	40.7	57.5	36.8	54.7	75.2	58.6
1991	34.6	39.0	44.9	54.5	69.2	73.2	77.7	76.3	67.5	56.5	44.9	38.9	56.4	38.1	56.2	75.7	56.3
1992	35.8	37.4	41.4	51.7	60.3	69.6	76.1	71.1	65.9	52.8	45.5	38.2	53.8	37.4	61.2	72.3	54.7
1993	37.2	31.3	39.2	51.5	64.4	71.7	78.4	75.1	68.1	54.9	46.0	35.9	54.5	35.6	51.7	75.1	56.3
1994	26.4	32.5	41.6	57.3	60.7	76.2	79.7	72.8	67.3	54.9	50.2	41.1	55.0	31.6	53.2	72.8	57.5
1995	37.7	31.1	45.3	52.3	62.4	71.6	78.7	77.0	68.2	59.1	41.6	32.7	54.8	36.6	53.3	75.8	56.3
1996	29.9	33.5	38.7	53.1	60.4	73.9	74.8	73.4	68.4	55.9	39.7	40.1	53.5	32.0	50.7	74.0	54.7
1997	33.1	40.7	45.2	51.4	60.3	71.0	77.2	73.9	66.9	57.6	44.5	38.7	55.0	38.0	52.3	74.0	56.3
1998	39.5	41.3	44.9	55.6	66.6	72.0	76.7	75.9	71.6	57.3	47.3	41.7	57.5	39.8	55.7	74.9	58.8
1999	36.0	37.6	42.3	53.7	64.2	71.9	80.0	75.6	68.4	54.8	49.6	39.1	56.1	38.5	53.4	75.8	57.6
2000	32.9	37.5	48.0	52.8	65.4	73.2	72.8	66.3	56.6	44.5	30.6	30.6	54.5	36.5	55.4	73.2	55.8
2001	32.9	37.4	41.3	54.3	63.5	73.7	73.8	77.6	66.7	57.1	51.3	42.7	56.0	33.6	53.0	75.0	58.4
2002	39.6	39.4	45.2	56.4	62.3	73.9	78.6	78.4	70.8	56.6	45.2	34.8	56.8	40.6	54.6	77.0	57.5
2003	29.9	31.1	44.0	51.5	60.3	70.4	77.1	78.8	71.0	57.3	52.0	38.7	55.2	31.9	51.9	75.4	60.1
2004	31.3	37.2	47.1	56.8	71.8	73.4	78.3	76.7	71.9	56.5	49.4	39.1	57.5	35.7	58.5	76.2	59.3
2005	36.1	36.7	41.4	55.8	69.9	74.7	79.2	78.7	73.4	59.3	48.5	34.3	56.5	37.3	52.4	77.5	60.4
2006	42.6	42.6	45.4	57.3	63.8	72.8	80.0	78.8	67.2	56.2	51.0	44.2	58.0	38.0	55.5	77.2	58.1
2007	40.9	31.2	45.4	52.1	66.3	73.7	77.8	78.5	72.3	64.8	47.3	39.5	57.5	38.5	54.6	76.7	61.5
2008	37.3	37.7	45.1	56.4	61.2	76.4	79.5	75.1	71.4	56.9	45.9	38.9	56.8	38.2	54.2	77.0	58.1
2009	30.6	37.6	42.5	54.9	64.5	72.3	75.4	78.0	67.8	56.2	50.2	36.9	56.6	36.7	54.0	75.2	58.0
2010	33.5	32.7	49.2	57.2	66.5	77.9	80.1	78.1	71.8	58.4	47.3	32.9	57.1	34.4	57.6	78.7	59.1
2011	31.0	37.4	44.1	56.8	67.5	75.6	81.6	76.0	69.9	57.0	50.0	42.3	57.4	33.8	56.1	77.7	59.0
2012	39.1	41.0	52.8	55.4	69.4	73.6	81.0	77.6	69.4	58.6	43.9	43.0	58.7	40.8	59.2	77.4	57.3
2013	37.0	35.6	41.2	54.9	63.8	74.9	79.9	74.5	67.8	59.7	44.4	38.2	56.0	38.5	53.3	76.4	57.3
2014	28.5	34.1	39.3	53.1	66.1	73.4	76.3	73.7	69.6	59.3	45.0	40.2	54.9	33.6	52.8	74.5	57.9
2015	32.3	26.4	39.1	54.6	68.7	74.4	77.4	75.9	72.4	56.3	51.4	48.9	56.5	33.0	54.1	75.9	60.0
2016	33.1	37.4	49.5	53.8	62.3	74.4	80.1	79.3	72.7	60.9	50.4	40.5	57.8	39.8	55.2	77.9	61.3
2017	39.9	44.0	44.3	60.0	63.0	74.9	79.2	74.2	70.5	62.3	46.6	36.2	57.9	41.5	55.8	76.1	59.8
2018	32.4	41.3	40.9	51.7	68.8	73.5	78.5	79.0	73.6	60.4	44.5	40.7	57.1	36.6	53.8	77.0	59.5
2019	35.2	37.8	43.1	59.2	67.5	74.6	80.5	77.4	72.3	61.0	44.8	39.0	57.7	37.9	56.6	77.5	59.3
2020	39.2	40.4	49.0	52.3		74.3	81.2	77.6	68.4	58.9	51.0	39.1		39.5		77.7	59.4
2021	36.6	35.5	47.9	55.4	63.2	74.4	78.5	78.2	70.6	63.7	45.2	43.7	57.7	37.1	55.5	77.0	59.8
2022	41.7	38.8	46.2	53.0	64.9	72.4	78.7	78.0	69.0	54.7	49.3	37.3	57.0	41.4	54.7	76.4	57.7
2023	41.6	41.6	45.3	58.0	61.3	69.6	78.2	76.0	70.2	59.3	45.2	42.1	57.4	40.2	54.9	74.6	58.2
2024	36.8	40.4	48.3	58.6	66.2	76.2	80.3	75.0	69.7	68.7	50.2	38.0	58.0		57.0	77.2	59.5
2025	30.9	36.8	48.6	56.0	64.8		73.4	70.7	58.3	48.4	36.4		35.2	56.5		59.1	
2026	33.3	36.2	48.6	58.6	63.9								35.3	57.0			
Year	Jan	Feb	Mar	Apr	May	Jun	Jul	Aug	Sep	Oct	Nov	Dec	Annual	Winter	Spring	Summer	Autumn
Average	34.7	36.9	44.7	54.8	64.4	73.4	78.1	76.3	69.6	67.8	47.5	38.9	56.4	36.8	54.6	75.9	58.3
Maximum	42.6	46.3	52.8	60.0	71.8	77.9	81.6	79.3	73.9	64.8	52.5	48.9	58.7	41.5	59.2	78.7	61.6
Minimum	24.8	26.4	38.7	51.4	59.9	69.5	72.8	71.1	65.9	52.7	39.7	26.6	53.5	31.6	50.7	72.3	54.2

Updated 6/9/2026

DATA SOURCE: Iowa State University - Iowa Environmental Masonry: [https://mesonet.agron.iastate.edu/sites/locate.php?network=MD\\_ASOS](https://mesonet.agron.iastate.edu/sites/locate.php?network=MD_ASOS)

NOTES: 1) Bold red values indicate extreme maxima, bold blue values indicate extreme minima

2) AWOS stations only report data every 10-20 minutes so the averages, above, likely do not reflect the absolute highest Maximum and lowest Minimum Temperatures.

### BALTIMORE-MARTIN STATE AIRPORT (MTN) AWOS Station

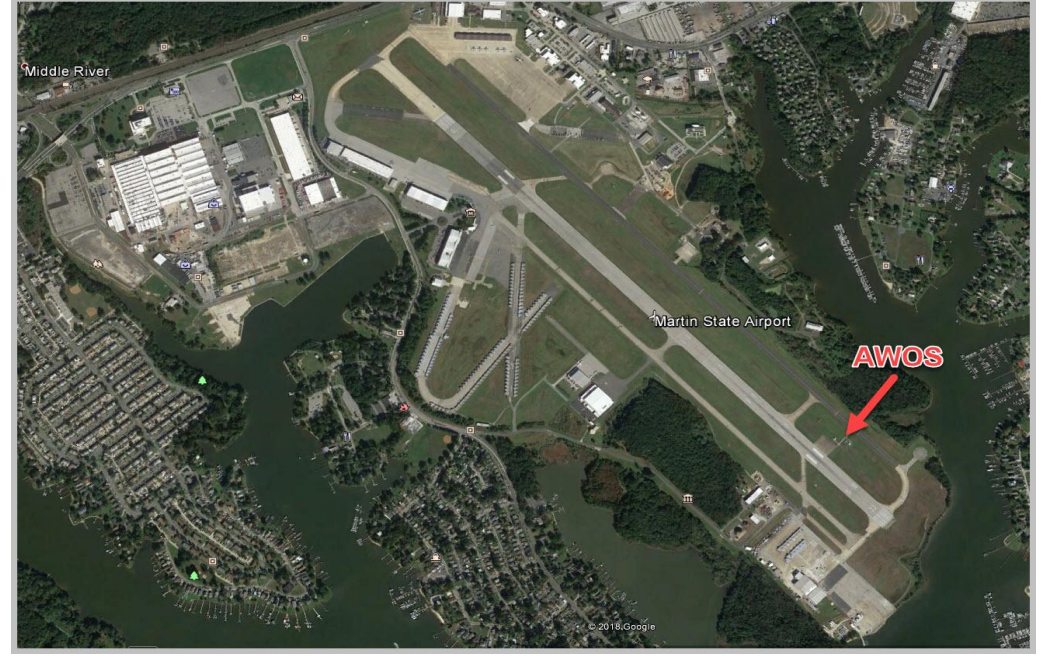


Image from Google Earth