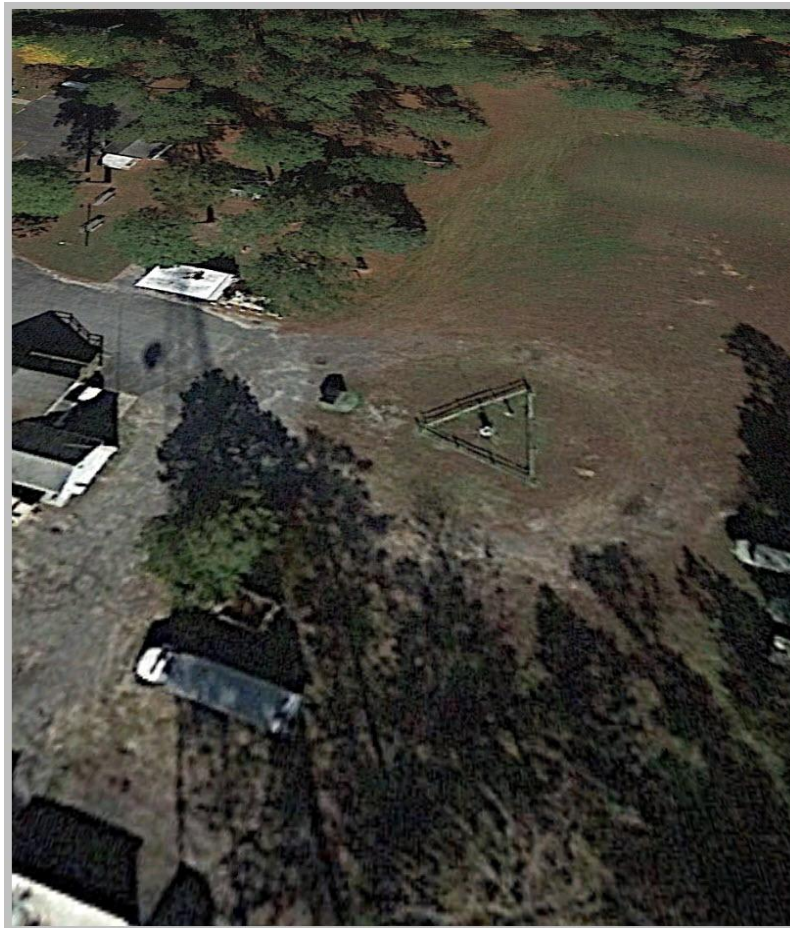


POWELLVILLE (WICOMICO DEMONSTRATION FOREST)																	
POWELLVILLE, WICOMICO COUNTY, MARYLAND																	
RAWS Station Elevation: 16 feet (5 meters); Coordinates: 38° 21' 28.4"N 75° 25' 51.3"W; NWS ID: PWLM2																	
POR: 2005-Present																	
AVERAGE MAXIMUM TEMPERATURE (°F)																	
Year	Jan	Feb	Mar	Apr	May	Jun	Jul	Aug	Sep	Oct	Nov	Dec	Annual	Winter	Spring	Summer	Autumn
2005								88.3	84.8	68.5	62.2						71.8
2006				68.6	76.1	81.8	89.0	88.2	76.5	67.7	61.4	55.3				86.3	68.5
2007	49.8	40.2	58.1	63.7	76.7	83.3	87.8	87.6	81.8	75.3	56.8	49.0	67.5	48.4	66.2	86.2	71.3
2008	46.4	41.6		68.1	75.4	89.1	90.0	85.5	80.2	68.5	55.2	52.4		45.7		88.2	68.0
2009	40.8	51.5	55.5	67.6	75.8	81.0	86.5	88.1	76.7	68.5	60.0	46.4	66.5	48.2	66.3	85.2	68.4
2010	41.6	41.5	59.4	71.9	79.1	89.5	92.3	89.0	83.7	70.1	58.6	40.1	68.1	43.2	70.1	90.3	70.8
2011	40.2	52.5	54.7	70.7	79.7	88.5	93.5	87.8	81.3	69.5	63.5	55.4	69.8	44.3	68.4	89.9	71.4
2012	51.0	52.5	65.2	67.9	79.0	84.8	91.8	86.7	80.7	69.9	54.7	53.9	69.8	52.9	70.7	87.8	68.4
2013	47.8	45.6	49.8	68.0	75.5	84.4	88.5	83.5	79.5	70.1	56.5	51.4	66.7	49.1	64.4	85.4	68.7
2014	42.3	46.2	52.2	66.2	77.5	84.8	86.5	84.0	79.7	70.6	55.3	49.7	66.2	46.6	65.3	85.1	68.5
2015	42.2	37.5	52.8	67.4	80.4	84.1	87.7	86.8	83.2	68.5	63.3	61.6	68.0	43.1	66.9	86.2	71.7
2016	46.0	49.3	62.3	65.6	72.2	83.3	90.2	90.8	80.9	71.8	60.7	48.9	68.5	52.3	66.7	88.1	71.2
2017	47.9	56.4	55.7	73.0	73.2	85.6	89.6	84.6	79.7	73.0	59.0	46.2	68.6	51.0	67.3	86.6	70.6
2018	44.2	55.6	50.8	64.2	80.8	84.5	87.6	89.6	83.1	71.3	55.5	51.2	68.2	48.7	65.2	87.2	70.0
2019	45.7	50.6	54.0	71.2	80.4	86.1	91.7	87.2	83.4	72.3	55.3	52.5	69.2	49.2	68.5	88.3	70.3
2020	51.1	53.7	60.9	65.2	71.6	85.0	91.4	87.2	79.2	71.6	64.9	50.0	69.3	52.4	65.9	87.9	71.9
2021	46.1	44.8	60.5	68.6	76.5	85.7	89.4	87.9	82.6	74.3	57.6	56.1	69.2	47.0	68.5	87.7	71.5
2022	43.0	53.0	60.5	66.9	74.9	85.1	89.9	89.9	80.9	67.2	62.9	49.8	68.7	50.7	67.4	88.3	70.3
2023	53.7	56.4	57.7	72.1	72.5	81.5	89.4	85.6	80.1	72.5	59.6	54.9	69.7	53.3	67.4	85.5	70.7
2024	48.4	51.5	59.5	69.2	76.3	88.3	89.3	86.7	79.0	73.6	62.4	50.2	69.5	51.6	68.3	88.1	71.7
2025	40.9	48.7	63.0	69.9	75.9	86.7	89.5	82.1	79.2	68.8	58.5	46.5	67.5	46.6	69.6	86.1	68.8
2026	44.0	45.3	64.7	71.7	75.8									45.3	70.7		
Year	Jan	Feb	Mar	Apr	May	Jun	Jul	Aug	Sep	Oct	Nov	Dec	Annual	Winter	Spring	Summer	Autumn
Average	45.6	48.7	57.8	68.5	76.4	85.2	89.6	87.0	80.8	70.6	59.2	51.1	68.4	48.5	67.6	87.2	70.2
Maximum	53.7	56.4	65.2	73.0	80.8	89.5	93.5	90.8	84.8	75.3	64.9	61.6	69.8	53.3	70.7	90.3	71.9
Minimum	40.2	37.5	49.8	63.7	71.6	81.0	86.5	82.1	76.5	67.2	54.7	40.1	66.2	43.1	64.4	85.1	68.0

AVERAGE MINIMUM TEMPERATURE (°F)																	
Year	Jan	Feb	Mar	Apr	May	Jun	Jul	Aug	Sep	Oct	Nov	Dec	Annual	Winter	Spring	Summer	Autumn
2005								67.0	57.1	48.4	37.1						47.5
2006				41.4	48.6	60.7	66.8	64.9	54.9	43.8	40.8	32.0				64.2	46.5
2007	30.9	21.4	32.9	40.2	48.6	60.0	64.3	65.5	56.6	52.7	34.5	30.9	44.9	28.1	40.6	63.3	47.9
2008	26.0	31.7		44.5	47.7	62.1	64.8	60.1	58.8	43.0	35.9	32.1		29.6		62.4	45.9
2009	22.5	27.1	32.6	42.9	53.6	61.5	63.1	66.8	56.6	47.4	42.5	29.9	45.5	27.2	43.0	63.8	48.8
2010	24.9	23.5	36.5	42.2	52.8	63.9	67.2	65.7	58.6	46.2	34.8	23.5	45.0	26.1	43.8	65.6	46.6
2011	23.6	27.9	33.2	47.2	54.0	61.4	67.6	63.8	62.0	45.4	38.9	31.7	46.4	25.0	44.8	64.3	48.7
2012	28.9	30.0	40.7	40.3	56.1	58.2	68.9	66.2	55.9	48.5	34.7	35.0	46.9	30.2	45.7	64.4	46.4
2013	27.5	28.6	30.2	41.8	52.6	62.6	68.9	63.3	53.6	49.1	33.2	31.2	45.2	30.4	41.5	64.9	45.3
2014	18.4	26.0	29.7	40.9	52.7	59.6	63.5	61.2	58.7	48.2	33.2	33.0	43.8	25.2	41.1	61.4	46.7
2015	25.0	16.2	30.0	42.2	54.9	64.3	66.6	62.8	61.2	45.7	40.1	42.2	45.9	24.7	42.4	64.6	49.0
2016	24.9	29.9	39.5	40.5	51.4	60.3	69.6	66.9	63.2	50.1	36.7	29.9	46.9	32.3	43.8	65.6	50.0
2017	32.3	33.7	33.6	49.8	52.6	61.8	68.7	64.2	59.9	51.2	37.0	27.6	47.7	32.0	45.3	64.9	49.4
2018	22.9	34.6	31.2	40.2	57.8	63.2	66.1	68.7	67.3	49.7	37.0	32.6	47.6	28.4	43.1	66.0	51.3
2019	25.9	30.6	32.7	48.2	57.3	63.0	68.1	66.5	60.1	51.7	33.3	31.7	47.4	29.7	46.0	65.9	48.4
2020	31.4	33.1	39.9	40.9	51.1	62.6	70.1	68.8	59.6	50.4	40.4	30.8	48.3	32.1	44.0	67.2	50.1
2021	29.3	30.1	36.8	42.6	50.1	63.0	67.6	68.7	59.8	54.3	34.4	35.5	47.7	30.1	43.2	66.4	49.5
2022	23.2	29.7	38.1	41.9	56.0	59.5	68.5	66.5	57.3	45.5	38.4	28.2	46.1	29.5	45.3	64.8	47.1
2023	34.2	32.9	34.2	46.0	48.7	58.3	68.5	65.7	60.6	47.7	33.8	35.1	47.1	31.8	43.0	64.2	47.4
2024	30.6	30.5	38.6	45.5	55.1	62.4	69.1	65.0	60.2	45.3	39.9	29.8	47.7	32.1	46.4	65.5	48.5
2025	21.8	28.6	37.8	44.5	55.6	65.3	69.8	61.0	59.7	46.0	35.8	26.6	46.0	26.7	46.0	65.4	47.2
2026	23.3	26.0	38.6	45.7	52.4									25.3	45.6		
Year	Jan	Feb	Mar	Apr	May	Jun	Jul	Aug	Sep	Oct	Nov	Dec	Annual	Winter	Spring	Summer	Autumn
Average	26.4	28.6	35.1	43.3	52.8	61.7	67.4	65.2	59.1	48.1	36.8	31.5	46.3	28.8	43.9	64.7	48.0
Maximum	34.2	34.6	40.7	49.8	57.8	65.3	70.1	68.8	67.3	54.3	42.5	42.2	48.3	32.3	46.4	67.2	51.3
Minimum	18.4	16.2	29.7	40.2	47.7	58.2	63.1	60.1	53.6	43.0	33.2	23.5	43.8	24.7	40.6	61.4	45.3

AVERAGE MEAN TEMPERATURE (°F)																	
Year	Jan	Feb	Mar	Apr	May	Jun	Jul	Aug	Sep	Oct	Nov	Dec	Annual	Winter	Spring	Summer	Autumn
2005								77.6	70.9	58.4	49.7						59.7
2006				55.0	62.4	71.3	77.9	76.5	65.7	55.7	51.1	43.7				75.2	57.5
2007	40.4	30.8	45.5	51.9	62.6	71.7	76.0	76.6	69.2	64.0	45.6	40.0	56.2	38.3	53.4	74.7	59.6
2008	36.2	36.7		56.3	61.5	75.6	77.4	72.8	69.5	55.7	45.6	42.2		37.6		75.3	56.9
2009	31.6	39.3	44.0	55.3	64.7	71.3	74.8	77.5	66.7	58.0	51.2	38.1	56.0	37.7	54.7	74.5	58.6
2010	33.3	32.5	47.9	57.1	66.0	76.7	79.7	77.4	71.2	58.1	46.7	31.8	56.5	34.6	57.0	77.9	58.7
2011	31.9	40.2	44.0	59.0	66.8	74.9	80.5	75.8	71.7	57.4	51.2	43.5	58.1	34.6	56.6	77.1	60.1
2012	39.9	41.2	53.0	54.1	67.5	71.5	80.3	76.5	68.3	59.2	44.7	44.5	58.4	41.6	58.2	76.1	57.4
2013	37.6	37.1	40.0	54.9	64.0	73.5	78.7	73.4	66.6	59.6	44.8	41.3	56.0	39.7	53.0	75.2	57.0
2014	30.3	36.1	41.0	53.6	65.1	72.2	75.0	72.6	69.2	59.4	44.3	41.4	55.0	35.9	53.2	73.3	57.6
2015	33.6	26.8	41.4	54.8	67.6	74.2	77.2	74.8	72.2	57.1	51.7	51.9	56.9	33.9	54.6	75.4	60.3
2016	35.5	39.6	50.9	53.1	61.8	71.8	79.9	78.8	72.1	61.0	48.7	39.4	57.7	42.3	55.2	76.8	60.6
2017	40.1	45.0	44.6	61.4	62.9	73.7	79.1	74.4	69.8	62.1	48.0	36.9	58.2	41.5	56.3	75.7	60.0
2018	33.5	45.1	41.0	52.2	69.3	73.9	76.8	79.1	75.2	60.5	46.3	41.9	57.9	38.5	54.1	76.6	60.6
2019	35.8	40.6	43.3	59.7	68.8	74.6	79.9	76.9	71.8	62.0	44.3	42.1	58.3	39.4	57.3	77.1	59.4
2020	41.3	43.4	50.4	53.1	61.4	73.8	80.8	78.0	69.4	61.0	52.7	40.4	58.8	42.3	54.9	77.5	61.0
2021	37.7	37.5	48.7	55.6	63.3	74.4	78.5	78.3	71.2	64.3	46.0	45.8	58.4	38.5	55.9	77.1	60.5
2022	33.1	41.4	49.3	54.4	65.5	72.3	79.2	78.2	69.1	56.4	50.7	39.0	57.4	40.1	56.4	76.6	58.7
2023	44.0	44.7	46.0	59.1	60.6	69.9	79.0	75.7	70.4	60.1	46.7	45.0	58.4	42.5	55.2	74.8	59.1
2024	39.5	41.0	49.1	57.4	65.7	75.4	79.2	75.9	69.6	59.5	51.2	40.0	58.6	41.8	57.4	76.8	60.1
2025	31.4	38.7	50.4	57.2	65.8	76.0	79.7	71.6	69.5	57.4	47.						

Powellville RAWS Station



Images from Google Earth