

**BALTIMORE, MARYLAND**  
**Monthly and Seasonal Snowfall**  
(Measurements in Inches)



Period of Record: 1883-Present

Season	Jul	Aug	Sep	Oct	Nov	Dec	Jan	Feb	Mar	Apr	May	Jun	Season Total
1883-1884	0.0	0.0	0.0	0.0	0.0	4.4	14.2	0.0	8.7	8.0	0.0	0.0	35.3
1884-1885	0.0	0.0	0.0	0.0	0.6	3.8	1.9	17.2	5.9	2.0	0.0	0.0	31.4
1885-1886	0.0	0.0	0.0	0.0	0.0	0.0	13.0	15.3	2.0	0.0	0.0	0.0	30.3
1886-1887	0.0	0.0	0.0	0.0	T	10.2	2.5	5.0	6.8	1.1	0.0	0.0	25.6
1887-1888	0.0	0.0	0.0	0.0	0.0	12.0	8.8	3.9	7.4	0.0	0.0	0.0	32.1
1888-1889	0.0	0.0	0.0	0.0	1.1	T	2.6	5.3	T	T	0.0	0.0	9.0
1889-1890	0.0	0.0	0.0	T	0.0	0.0	0.1	2.5	2.3	T	0.0	0.0	4.9
1890-1891	0.0	0.0	0.0	T	T	10.6	1.3	3.5	20.5	0.0	T	0.0	35.9
1891-1892	0.0	0.0	0.0	0.0	T	T	14.5	4.2	25.6	T	0.0	0.0	44.3
1892-1893	0.0	0.0	0.0	0.0	2.2	4.3	8.1	11.7	4.0	0.0	T	0.0	30.3
1893-1894	0.0	0.0	0.0	0.0	0.2	3.1	1.0	11.7	T	5.0	0.0	0.0	21.0
1894-1895	0.0	0.0	0.0	0.0	T	3.0	5.0	9.3	0.6	0.0	0.0	0.0	17.9
1895-1896	0.0	0.0	0.0	T	T	0.2	1.0	2.1	13.8	T	0.0	0.0	17.1
1896-1897	0.0	0.0	0.0	0.0	3.0	3.2	4.7	1.4	T	0.0	0.0	0.0	12.3
1897-1898	0.0	0.0	0.0	0.0	T	2.6	5.4	T	2.4	0.1	0.0	0.0	10.5
1898-1899	0.0	0.0	0.0	0.0	9.7	0.6	5.3	33.9	1.6	T	0.0	0.0	51.1
1899-1900	0.0	0.0	0.0	0.0	0.0	0.7	2.5	13.0	9.5	T	0.0	0.0	25.7
1900-1901	0.0	0.0	0.0	0.0	T	T	6.5	2.1	0.1	0.0	0.0	0.0	8.7
1901-1902	0.0	0.0	0.0	0.0	0.1	0.6	6.7	1.0	5.0	0.0	0.0	0.0	13.4
1902-1903	0.0	0.0	0.0	0.0	0.0	7.0	6.8	6.0	0.0	0.0	0.0	0.0	19.8
1903-1904	0.0	0.0	0.0	T	1.0	3.8	16.6	2.5	2.0	0.0	0.0	0.0	25.9
1904-1905	0.0	0.0	0.0	0.0	3.0	17.1	15.0	6.7	0.2	T	0.0	0.0	42.0
1905-1906	0.0	0.0	0.0	0.0	0.0	5.7	1.2	6.9	11.2	0.0	0.0	0.0	25.0
1906-1907	0.0	0.0	0.0	0.0	T	0.2	7.3	15.9	7.7	T	0.0	0.0	31.1
1907-1908	0.0	0.0	0.0	0.0	T	2.1	2.6	12.1	0.5	T	0.0	0.0	17.3
1908-1909	0.0	0.0	0.0	0.0	4.8	7.5	6.2	3.3	11.7	T	0.0	0.0	33.5
1909-1910	0.0	0.0	0.0	0.0	T	12.3	13.2	5.2	2.1	0.0	0.0	0.0	32.8
1910-1911	0.0	0.0	0.0	0.0	1.0	12.1	4.7	9.0	8.4	T	0.0	0.0	35.2
1911-1912	0.0	0.0	0.0	0.0	T	T	14.4	T	8.5	0.0	0.0	0.0	22.9
1912-1913	0.0	0.0	0.0	0.0	0.5	4.4	T	2.4	T	T	0.0	0.0	7.3
1913-1914	0.0	0.0	0.0	0.0	0.0	T	T	11.8	11.6	0.0	0.0	0.0	23.4
1914-1915	0.0	0.0	0.0	0.0	0.0	2.6	2.6	1.6	5.0	4.5	0.0	0.0	16.3
1915-1916	0.0	0.0	0.0	0.0	T	4.3	1.6	7.3	2.8	5.1	0.0	0.0	21.1
1916-1917	0.0	0.0	0.0	0.0	T	10.5	5.9	6.7	2.2	3.0	0.0	0.0	28.3
1917-1918	0.0	0.0	0.0	T	2.0	8.3	22.2	2.4	T	0.5	0.0	0.0	35.4
1918-1919	0.0	0.0	0.0	0.0	0.0	T	1.3	3.0	T	T	0.0	0.0	4.3
1919-1920	0.0	0.0	0.0	0.0	0.0	5.1	2.1	9.6	2.4	T	0.0	0.0	19.2
1920-1921	0.0	0.0	0.0	0.0	T	0.5	0.6	8.7	T	T	0.0	0.0	9.8
1921-1922	0.0	0.0	0.0	0.0	T	8.6	31.5	4.7	0.8	0.0	0.0	0.0	45.6
1922-1923	0.0	0.0	0.0	0.0	T	2.8	6.8	4.3	6.2	1.1	T	0.0	21.2
1923-1924	0.0	0.0	0.0	0.0	0.0	1.8	0.6	10.6	11.6	9.8	0.0	0.0	34.4
1924-1925	0.0	0.0	0.0	0.0	0.2	0.1	22.7	T	0.3	0.0	0.0	0.0	23.3
1925-1926	0.0	0.0	0.0	2.5	0.2	0.2	3.3	16.1	T	0.6	0.0	0.0	22.9
1926-1927	0.0	0.0	0.0	0.0	T	1.9	0.9	7.9	T	1.3	0.0	0.0	12.0
1927-1928	0.0	0.0	0.0	0.0	T	1.5	14.3	0.1	3.3	0.1	0.0	0.0	19.3
1928-1929	0.0	0.0	0.0	0.0	T	0.3	0.8	11.3	T	T	0.0	0.0	12.4
1929-1930	0.0	0.0	0.0	T	0.3	4.1	15.0	3.4	T	T	0.0	0.0	22.8
1930-1931	0.0	0.0	0.0	T	T	1.6	1.2	0.8	10.0	T	0.0	0.0	13.6
1931-1932	0.0	0.0	0.0	0.0	0.1	0.8	0.8	T	3.2	0.0	0.0	0.0	4.9
1932-1933	0.0	0.0	0.0	0.0	T	14.7	0.1	10.6	2.5	T	0.0	0.0	27.9
1933-1934	0.0	0.0	0.0	0.0	0.8	7.5	T	27.3	14.0	T	0.0	0.0	49.6
1934-1935	0.0	0.0	0.0	T	T	0.1	21.2	8.2	1.3	1.0	0.0	0.0	31.8
1935-1936	0.0	0.0	0.0	0.0	1.2	10.4	3.7	14.8	1.6	T	0.0	0.0	31.7
1936-1937	0.0	0.0	0.0	0.0	T	2.8	T	8.5	14.7	T	0.0	0.0	26.0
1937-1938	0.0	0.0	0.0	0.0	T	0.8	1.4	0.8	5.0	T	0.0	0.0	8.0
1938-1939	0.0	0.0	0.0	0.0	9.1	0.4	9.1	0.3	0.5	T	0.0	0.0	19.4
1939-1940	0.0	0.0	0.0	0.0	T	6.9	9.6	5.3	1.3	0.8	0.0	0.0	23.9
1940-1941	0.0	0.0	0.0	1.3	T	0.2	5.5	4.8	12.1	0.0	0.0	0.0	23.9
1941-1942	0.0	0.0	0.0	0.0	0.0	0.1	3.0	1.0	22.2	T	0.0	0.0	26.3
1942-1943	0.0	0.0	0.0	0.0	T	5.1	6.5	2.1	14.7	T	0.0	0.0	28.4
1943-1944	0.0	0.0	0.0	0.0	0.7	T	5.2	5.8	6.9	1.7	0.0	0.0	20.3
1944-1945	0.0	0.0	0.0	0.0	T	4.6	9.8	4.2	0.0	0.0	0.0	0.0	18.6
1945-1946	0.0	0.0	0.0	0.0	T	12.2	2.8	11.1	T	0.0	0.0	0.0	26.1
1946-1947	0.0	0.0	0.0	0.0	0.0	3.2	6.6	12.5	2.8	0.0	0.0	0.0	25.1
1947-1948	0.0	0.0	0.0	0.0	T	4.1	8.9	10.4	T	0.0	0.0	0.0	23.4
1948-1949	0.0	0.0	0.0	0.0	0.0	6.8	4.2	8.9	T	0.0	0.0	0.0	19.9
1949-1950	0.0	0.0	0.0	0.0	T	T	0.5	T	0.2	T	0.0	0.0	0.7
1950-1951	0.0	0.0	0.0	0.0	0.5	2.5	2.5	0.7	T	0.0	0.0	0.0	6.2
1951-1952	0.0	0.0	0.0	0.0	T	5.4	1.7	T	7.0	T	0.0	0.0	14.1
1952-1953	0.0	0.0	0.0	T	2.8	3.0	2.4	T	3.6	T	0.0	0.0	11.8
1953-1954	0.0	0.0	0.0	0.0	5.9	T	13.7	1.0	1.5	0.0	0.0	0.0	22.1
1954-1955	0.0	0.0	0.0	T	T	0.4	2.3	6.2	1.2	0.0	0.0	0.0	10.1
1955-1956	0.0	0.0	0.0	0.0	2.0	0.5	8.4	0.4	7.8	0.0	0.0	0.0	19.1
1956-1957	0.0	0.0	0.0	0.0	T	0.2	10.7	2.7	1.4	0.4	0.0	0.0	15.4
1957-1958	0.0	0.0	0.0	0.0	T	9.5	1.5	18.3	13.7	0.0	0.0	0.0	43.0
1958-1959	0.0	0.0	0.0	0.0	T	0.5	2.1	T	1.0	0.4	0.0	0.0	4.0

1959-1960	0.0	0.0	0.0	0.0	0.0	1.5	0.3	10.7	21.6	0.0	0.0	0.0	34.1
1960-1961	0.0	0.0	0.0	0.0	0.2	15.6	14.3	16.4	T	0.0	0.0	0.0	46.5
1961-1962	0.0	0.0	0.0	0.0	3.2	7.2	2.0	9.2	13.6	0.0	0.0	0.0	35.2
1962-1963	0.0	0.0	0.0	0.0	0.3	11.7	3.7	2.1	1.8	0.0	T	0.0	19.6
1963-1964	0.0	0.0	0.0	0.0	T	9.7	10.3	18.2	13.2	0.4	0.0	0.0	51.8
1964-1965	0.0	0.0	0.0	0.0	T	0.8	8.3	1.1	8.4	0.0	0.0	0.0	18.6
1965-1966	0.0	0.0	0.0	0.0	0.0	T	21.4	11.4	0.0	T	0.0	0.0	32.8
1966-1967	0.0	0.0	0.0	0.0	T	20.4	0.4	20.1	2.5	0.0	0.0	0.0	43.4
1967-1968	0.0	0.0	0.0	0.0	8.4	4.6	2.5	2.6	5.3	0.0	0.0	0.0	23.4
1968-1969	0.0	0.0	0.0	0.0	4.3	T	0.1	6.4	7.8	0.0	0.0	0.0	18.6
1969-1970	0.0	0.0	0.0	0.0	T	9.0	6.1	4.0	1.9	T	0.0	0.0	21.0
1970-1971	0.0	0.0	0.0	0.0	0.0	6.3	4.1	0.6	2.0	T	0.0	0.0	13.0
1971-1972	0.0	0.0	0.0	0.0	1.0	T	1.1	11.4	0.2	0.3	0.0	0.0	14.0
1972-1973	0.0	0.0	0.0	T	T	T	T	1.2	T	T	0.0	0.0	1.2
1973-1974	0.0	0.0	0.0	0.0	0.0	8.3	1.2	7.6	T	T	0.0	0.0	17.1
1974-1975	0.0	0.0	0.0	0.0	T	0.4	5.1	5.5	1.2	T	0.0	0.0	12.2
1975-1976	0.0	0.0	0.0	0.0	0.0	0.7	1.7	1.3	7.8	0.0	0.0	0.0	11.5
1976-1977	0.0	0.0	0.0	0.0	1.1	1.5	8.5	T	T	T	0.0	0.0	11.1
1977-1978	0.0	0.0	0.0	T	0.6	0.5	12.4	12.3	8.5	T	0.0	0.0	34.3
1978-1979	0.0	0.0	0.0	0.0	3.7	0.0	5.7	33.1	T	T	0.0	0.0	42.5
1979-1980	0.0	0.0	0.0	0.3	T	0.1	4.7	3.8	5.7	0.0	0.0	0.0	14.6
1980-1981	0.0	0.0	0.0	0.0	T	0.2	4.1	T	0.3	0.0	0.0	0.0	4.6
1981-1982	0.0	0.0	0.0	0.0	T	2.4	14.8	7.6	0.7	T	0.0	0.0	25.5
1982-1983	0.0	0.0	0.0	0.0	0.0	7.2	1.2	27.2	T	T	0.0	0.0	35.6
1983-1984	0.0	0.0	0.0	0.0	T	T	8.4	T	6.1	T	0.0	0.0	14.5
1984-1985	0.0	0.0	0.0	0.0	T	0.1	9.1	0.4	T	0.7	0.0	0.0	10.3
1985-1986	0.0	0.0	0.0	0.0	0.0	0.7	1.9	13.0	T	T	0.0	0.0	15.6
1986-1987	0.0	0.0	0.0	0.0	0.0	T	25.1	10.1	T	T	0.0	0.0	35.2
1987-1988	0.0	0.0	0.0	0.0	6.0	0.5	13.7	0.2	T	T	0.0	0.0	20.4
1988-1989	0.0	0.0	0.0	0.0	0.0	0.9	6.0	1.1	0.3	0.0	0.0	0.0	8.3
1989-1990	0.0	0.0	0.0	0.0	3.8	10.2	0.5	T	2.7	0.1	0.0	0.0	17.3
1990-1991	0.0	0.0	0.0	0.0	0.0	4.8	4.2	0.1	0.3	0.0	0.0	0.0	9.4
1991-1992	0.0	0.0	0.0	0.0	T	T	2.2	1.9	T	T	0.0	0.0	4.1
1992-1993	0.0	0.0	0.0	0.0	T	1.5	1.4	8.8	12.7	T	0.0	0.0	24.4
1993-1994	0.0	0.0	0.0	0.0	T	2.9	4.9	5.3	4.2	T	0.0	0.0	17.3
1994-1995	0.0	0.0	0.0	0.0	0.2	0.0	0.3	7.5	0.2	0.0	0.0	0.0	8.2
1995-1996	0.0	0.0	0.0	0.0	1.0	2.3	32.6	19.0	7.6	T	0.0	0.0	62.5
1996-1997	0.0	0.0	0.0	0.0	0.3	0.2	5.0	7.1	2.7	T	0.0	0.0	15.3
1997-1998	0.0	0.0	0.0	0.0	0.0	0.4	0.7	T	2.1	0.0	0.0	0.0	3.2
1998-1999	0.0	0.0	0.0	0.0	0.0	3.0	4.0	0.6	7.6	0.0	0.0	0.0	15.2
1999-2000	0.0	0.0	0.0	0.0	0.0	0.2	23.1	2.6	0.0	0.2	0.0	0.0	26.1
2000-2001	0.0	0.0	0.0	0.0	T	1.3	3.7	3.7	T	T	0.0	0.0	8.7
2001-2002	0.0	0.0	0.0	0.0	0.0	0.0	2.3	T	T	0.0	0.0	0.0	2.3
2002-2003	0.0	0.0	0.0	0.0	0.0	9.7	5.3	40.5	2.6	T	0.0	0.0	58.1
2003-2004	0.0	0.0	0.0	T	0.0	9.6	8.4	0.1	0.2	0.0	0.0	0.0	18.3
2004-2005	0.0	0.0	0.0	0.0	0.0	T	7.6	10.0	0.4	0.0	0.0	0.0	18.0
2005-2006	0.0	0.0	0.0	0.0	0.5	6.0	T	13.1	T	T	0.0	0.0	19.6
2006-2007	0.0	0.0	0.0	0.0	0.0	T	0.9	8.5	1.4	0.2	0.0	0.0	11.0
2007-2008	0.0	0.0	0.0	0.0	T	4.8	2.4	1.3	0.0	0.0	0.0	0.0	8.5
2008-2009	0.0	0.0	0.0	0.0	T	0.6	2.1	0.6	5.8	T	0.0	0.0	9.1
2009-2010	0.0	0.0	0.0	0.0	0.0	20.1	6.9	50.0	T	0.0	0.0	0.0	77.0
2010-2011	0.0	0.0	0.0	0.0	0.0	1.2	10.7	2.5	T	0.0	0.0	0.0	14.4
2011-2012	0.0	0.0	0.0	T	0.0	T	1.3	0.5	T	0.0	0.0	0.0	1.8
2012-2013	0.0	0.0	0.0	0.0	T	1.4	2.9	0.5	3.2	T	0.0	0.0	8.0
2013-2014	0.0	0.0	0.0	0.0	T	2.9	9.8	14.2	12.1	T	0.0	0.0	39.0
2014-2015	0.0	0.0	0.0	0.0	0.3	0.2	5.9	14.6	7.7	0.0	0.0	0.0	28.7
2015-2016	0.0	0.0	0.0	0.0	0.0	T	30.0	2.6	2.5	T	0.0	0.0	35.1
2016-2017	0.0	0.0	0.0	0.0	0.0	T	0.7	T	2.3	0.0	0.0	0.0	3.0
2017-2018	0.0	0.0	0.0	0.0	0.0	4.3	2.2	2.2	6.7	0.0	0.0	0.0	15.4
2018-2019	0.0	0.0	0.0	0.0	1.7	0.0	7.8	6.1	2.7	0.0	0.0	0.0	18.3
2019-2020	0.0	0.0	0.0	0.0	T	0.3	1.5	0.0	0.0	0.0	0.0	0.0	1.8
2020-2021	0.0	0.0	0.0	0.0	0.0	1.6	4.3	5.0	0.0	T	0.0	0.0	10.9
2021-2022	0.0	0.0	0.0	0.0	T	T	13.3	0.7	0.4	0.0	0.0	0.0	14.4
2022-2023	0.0	0.0	0.0	0.0	0.0	T	T	0.2	T	0.0	0.0	0.0	0.2
2023-2024	0.0	0.0	0.0	0.0	T	T	9.1	2.2	T	0.0	0.0	0.0	11.3
2024-2025	0.0	0.0	0.0	0.0	T	T	8.9	3.8	0.0	0.0	0.0	0.0	12.7
2025-2026	0.0	0.0	0.0	0.0	T	2.0	11.7	1.9	2.0	0.0	0.0		17.6
Season	Jul	Aug	Sep	Oct	Nov	Dec	Jan	Feb	Mar	Apr	May	Jun	Season Total
Average 1883-1884 through 2024-2025	0.0	0.0	0.0	T	0.6	3.4	6.3	6.8	4.0	0.3	T	0.0	21.5
Average 1990-1991 through 2019-2020	0.0	0.0	0.0	T	0.1	2.5	6.4	7.5	2.8	T	0.0	0.0	19.3
Running Avg 2000-2001 through 2029-2030	0.0	0.0	0.0	T	0.1	2.5	6.1	7.1	1.9	T	0.0	0.0	17.8
Maximum	0.0	0.0	0.0	2.5	9.7	20.4	32.6	50.0	25.6	9.8	T	0.0	77.0
Year/Season	All Months	All Months	All Months	1925	1898	1966	1996	2010	1892	1924	1963, 1923, 1893, 1891	All Months	2009-2010
Minimum	0.0	0.0	0.0	0.0	0.0	0.0	T	0.0	0.0	0.0	0.0	0.0	0.2
Year/Season	All Months	All Months	All Months	2025+	2022+	2018+	2023+	2020, 1884	2025+	2025+	2025+	All Months	2022-2023

# BALTIMORE, MARYLAND

## Monthly and Calendar-Year Snowfall

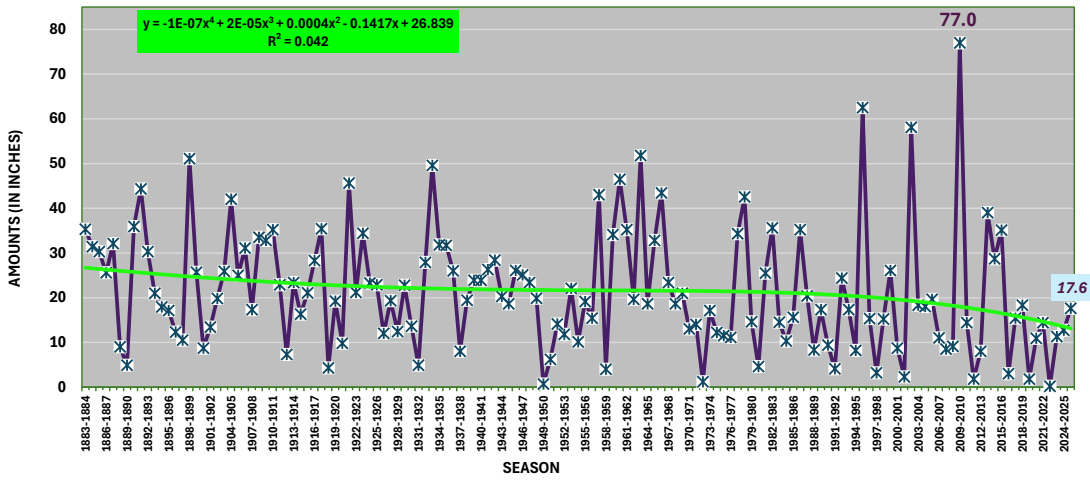
(Measurements in Inches)

Period of Record: 1883-Present

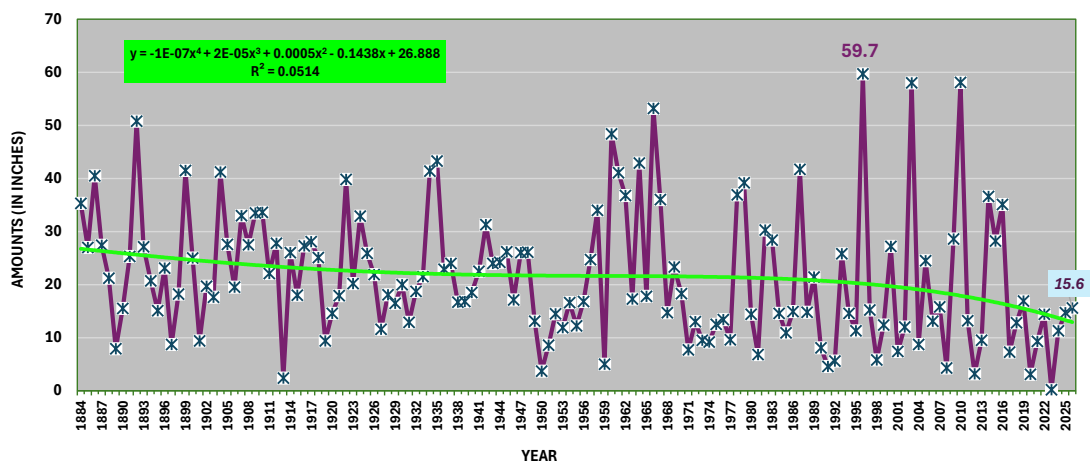
Year	Jan	Feb	Mar	Apr	May	Jun	Jul	Aug	Sep	Oct	Nov	Dec	Year Total
1883							0.0	0.0	0.0	0.0	0.0	4.4	
1884	14.2	0.0	8.7	8.0	0.0	0.0	0.0	0.0	0.0	0.0	0.6	3.8	35.3
1885	1.9	17.2	5.9	2.0	0.0	0.0	0.0	0.0	0.0	0.0	0.0	0.0	27.0
1886	13.0	15.3	2.0	0.0	0.0	0.0	0.0	0.0	0.0	0.0	T	10.2	40.5
1887	2.5	5.0	6.8	1.1	0.0	0.0	0.0	0.0	0.0	0.0	0.0	12.0	27.4
1888	8.8	3.9	7.4	0.0	0.0	0.0	0.0	0.0	0.0	0.0	1.1	T	21.2
1889	2.6	5.3	T	T	0.0	0.0	0.0	0.0	0.0	T	0.0	0.0	7.9
1890	0.1	2.5	2.3	T	0.0	0.0	0.0	0.0	0.0	T	T	10.6	15.5
1891	1.3	3.5	20.5	0.0	T	0.0	0.0	0.0	0.0	0.0	T	T	25.3
1892	14.5	4.2	25.6	T	0.0	0.0	0.0	0.0	0.0	0.0	2.2	4.3	50.8
1893	8.1	11.7	4.0	0.0	T	0.0	0.0	0.0	0.0	0.0	0.2	3.1	27.1
1894	1.0	11.7	T	5.0	0.0	0.0	0.0	0.0	0.0	0.0	T	3.0	20.7
1895	5.0	9.3	0.6	0.0	0.0	0.0	0.0	0.0	0.0	T	T	0.2	15.1
1896	1.0	2.1	13.8	T	0.0	0.0	0.0	0.0	0.0	0.0	3.0	3.2	23.1
1897	4.7	1.4	T	0.0	0.0	0.0	0.0	0.0	0.0	0.0	T	2.6	8.7
1898	5.4	T	2.4	0.1	0.0	0.0	0.0	0.0	0.0	0.0	9.7	0.6	18.2
1899	5.3	33.9	1.6	T	0.0	0.0	0.0	0.0	0.0	0.0	0.0	0.7	41.5
1900	2.5	13.0	9.5	T	0.0	0.0	0.0	0.0	0.0	0.0	T	T	25.0
1901	6.5	2.1	0.1	0.0	0.0	0.0	0.0	0.0	0.0	0.0	0.1	0.6	9.4
1902	6.7	1.0	5.0	0.0	0.0	0.0	0.0	0.0	0.0	0.0	0.0	7.0	19.7
1903	6.8	6.0	0.0	0.0	0.0	0.0	0.0	0.0	0.0	T	1.0	3.8	17.6
1904	16.6	2.5	2.0	0.0	0.0	0.0	0.0	0.0	0.0	0.0	3.0	17.1	41.2
1905	15.0	6.7	0.2	T	0.0	0.0	0.0	0.0	0.0	0.0	0.0	5.7	27.6
1906	1.2	6.9	11.2	0.0	0.0	0.0	0.0	0.0	0.0	0.0	T	0.2	19.5
1907	7.3	15.9	7.7	T	0.0	0.0	0.0	0.0	0.0	0.0	T	2.1	33.0
1908	2.6	12.1	0.5	T	0.0	0.0	0.0	0.0	0.0	0.0	4.8	7.5	27.5
1909	6.2	3.3	11.7	T	0.0	0.0	0.0	0.0	0.0	0.0	T	12.3	33.5
1910	13.2	5.2	2.1	0.0	0.0	0.0	0.0	0.0	0.0	0.0	1.0	12.1	33.6
1911	4.7	9.0	8.4	T	0.0	0.0	0.0	0.0	0.0	0.0	T	T	22.1
1912	14.4	T	8.5	0.0	0.0	0.0	0.0	0.0	0.0	0.0	0.5	4.4	27.8
1913	T	2.4	T	T	0.0	0.0	0.0	0.0	0.0	0.0	0.0	T	2.4
1914	T	11.8	11.6	0.0	0.0	0.0	0.0	0.0	0.0	0.0	0.0	2.6	26.0
1915	2.6	1.6	5.0	4.5	0.0	0.0	0.0	0.0	0.0	0.0	T	4.3	18.0
1916	1.6	7.3	2.8	5.1	0.0	0.0	0.0	0.0	0.0	0.0	T	10.5	27.3
1917	5.9	6.7	2.2	3.0	0.0	0.0	0.0	0.0	0.0	T	2.0	8.3	28.1
1918	22.2	2.4	T	0.5	0.0	0.0	0.0	0.0	0.0	0.0	0.0	T	25.1
1919	1.3	3.0	T	T	0.0	0.0	0.0	0.0	0.0	0.0	0.0	5.1	9.4
1920	2.1	9.6	2.4	T	0.0	0.0	0.0	0.0	0.0	0.0	T	0.5	14.6
1921	0.6	8.7	T	T	0.0	0.0	0.0	0.0	0.0	0.0	T	8.6	17.9
1922	31.5	4.7	0.8	0.0	0.0	0.0	0.0	0.0	0.0	0.0	T	2.8	39.8
1923	6.8	4.3	6.2	1.1	T	0.0	0.0	0.0	0.0	0.0	0.0	1.8	20.2
1924	0.6	10.6	11.6	9.8	0.0	0.0	0.0	0.0	0.0	0.0	0.2	0.1	32.9
1925	22.7	T	0.3	0.0	0.0	0.0	0.0	0.0	0.0	2.5	0.2	0.2	25.9
1926	3.3	16.1	T	0.6	0.0	0.0	0.0	0.0	0.0	0.0	T	1.9	21.9
1927	0.9	7.9	T	1.3	0.0	0.0	0.0	0.0	0.0	0.0	T	1.5	11.6
1928	14.3	0.1	3.3	0.1	0.0	0.0	0.0	0.0	0.0	0.0	T	0.3	18.1
1929	0.8	11.3	T	T	0.0	0.0	0.0	0.0	0.0	T	0.3	4.1	16.5
1930	15.0	3.4	T	T	0.0	0.0	0.0	0.0	0.0	T	T	1.6	20.0
1931	1.2	0.8	10.0	T	0.0	0.0	0.0	0.0	0.0	0.0	0.1	0.8	12.9
1932	0.8	T	3.2	0.0	0.0	0.0	0.0	0.0	0.0	0.0	T	14.7	18.7
1933	0.1	10.6	2.5	T	0.0	0.0	0.0	0.0	0.0	0.0	0.8	7.5	21.5
1934	T	27.3	14.0	T	0.0	0.0	0.0	0.0	0.0	T	T	0.1	41.4
1935	21.2	8.2	1.3	1.0	0.0	0.0	0.0	0.0	0.0	0.0	1.2	10.4	43.3
1936	3.7	14.8	1.6	T	0.0	0.0	0.0	0.0	0.0	0.0	T	2.8	22.9
1937	T	8.5	14.7	T	0.0	0.0	0.0	0.0	0.0	0.0	T	0.8	24.0
1938	1.4	0.8	5.0	T	0.0	0.0	0.0	0.0	0.0	0.0	9.1	0.4	16.7
1939	9.1	0.3	0.5	T	0.0	0.0	0.0	0.0	0.0	0.0	T	6.9	16.8
1940	9.6	5.3	1.3	0.8	0.0	0.0	0.0	0.0	0.0	1.3	T	0.2	18.5
1941	5.5	4.8	12.1	0.0	0.0	0.0	0.0	0.0	0.0	0.0	0.0	0.1	22.5
1942	3.0	1.0	22.2	T	0.0	0.0	0.0	0.0	0.0	0.0	T	5.1	31.3
1943	6.5	2.1	14.7	T	0.0	0.0	0.0	0.0	0.0	0.0	0.7	T	24.0
1944	5.2	5.8	6.9	1.7	0.0	0.0	0.0	0.0	0.0	0.0	T	4.6	24.2
1945	9.8	4.2	0.0	0.0	0.0	0.0	0.0	0.0	0.0	0.0	T	12.2	26.2
1946	2.8	11.1	T	0.0	0.0	0.0	0.0	0.0	0.0	0.0	0.0	3.2	17.1
1947	6.6	12.5	2.8	0.0	0.0	0.0	0.0	0.0	0.0	0.0	T	4.1	26.0
1948	8.9	10.4	T	0.0	0.0	0.0	0.0	0.0	0.0	0.0	0.0	6.8	26.1
1949	4.2	8.9	T	0.0	0.0	0.0	0.0	0.0	0.0	0.0	T	T	13.1
1950	0.5	T	0.2	T	0.0	0.0	0.0	0.0	0.0	0.0	0.5	2.5	3.7
1951	2.5	0.7	T	0.0	0.0	0.0	0.0	0.0	0.0	0.0	T	5.4	8.6
1952	1.7	T	7.0	T	0.0	0.0	0.0	0.0	0.0	T	2.8	3.0	14.5
1953	2.4	T	3.6	T	0.0	0.0	0.0	0.0	0.0	0.0	5.9	T	11.9
1954	13.7	1.0	1.5	0.0	0.0	0.0	0.0	0.0	0.0	T	T	0.4	16.6
1955	2.3	6.2	1.2	0.0	0.0	0.0	0.0	0.0	0.0	0.0	2.0	0.5	12.2
1956	8.4	0.4	7.8	0.0	0.0	0.0	0.0	0.0	0.0	0.0	T	0.2	16.8
1957	10.7	2.7	1.4	0.4	0.0	0.0	0.0	0.0	0.0	0.0	T	9.5	24.7
1958	1.5	18.3	13.7	0.0	0.0	0.0	0.0	0.0	0.0	0.0	T	0.5	34.0

1959	2.1	T	1.0	0.4	0.0	0.0	0.0	0.0	0.0	0.0	0.0	1.5	5.0
1960	0.3	10.7	21.6	0.0	0.0	0.0	0.0	0.0	0.0	0.0	0.2	15.6	48.4
1961	14.3	16.4	T	0.0	0.0	0.0	0.0	0.0	0.0	0.0	3.2	7.2	41.1
1962	2.0	9.2	13.6	0.0	0.0	0.0	0.0	0.0	0.0	0.0	0.3	11.7	36.8
1963	3.7	2.1	1.8	0.0	T	0.0	0.0	0.0	0.0	0.0	T	9.7	17.3
1964	10.3	18.2	13.2	0.4	0.0	0.0	0.0	0.0	0.0	0.0	T	0.8	42.9
1965	8.3	1.1	8.4	0.0	0.0	0.0	0.0	0.0	0.0	0.0	0.0	T	17.8
1966	21.4	11.4	0.0	T	0.0	0.0	0.0	0.0	0.0	0.0	T	20.4	53.2
1967	0.4	20.1	2.5	0.0	0.0	0.0	0.0	0.0	0.0	0.0	8.4	4.6	36.0
1968	2.5	2.6	5.3	0.0	0.0	0.0	0.0	0.0	0.0	0.0	4.3	T	14.7
1969	0.1	6.4	7.8	0.0	0.0	0.0	0.0	0.0	0.0	0.0	T	9.0	23.3
1970	6.1	4.0	1.9	T	0.0	0.0	0.0	0.0	0.0	0.0	0.0	6.3	18.3
1971	4.1	0.6	2.0	T	0.0	0.0	0.0	0.0	0.0	0.0	1.0	T	7.7
1972	1.1	11.4	0.2	0.3	0.0	0.0	0.0	0.0	0.0	T	T	T	13.0
1973	T	1.2	T	T	0.0	0.0	0.0	0.0	0.0	0.0	0.0	8.3	9.5
1974	1.2	7.6	T	T	0.0	0.0	0.0	0.0	0.0	0.0	T	0.4	9.2
1975	5.1	5.5	1.2	T	0.0	0.0	0.0	0.0	0.0	0.0	0.0	0.7	12.5
1976	1.7	1.3	7.8	0.0	0.0	0.0	0.0	0.0	0.0	0.0	1.1	1.5	13.4
1977	8.5	T	T	T	0.0	0.0	0.0	0.0	0.0	T	0.6	0.5	9.6
1978	12.4	12.3	8.5	T	0.0	0.0	0.0	0.0	0.0	0.0	3.7	0.0	36.9
1979	5.7	33.1	T	T	0.0	0.0	0.0	0.0	0.0	0.3	T	0.1	39.2
1980	4.7	3.8	5.7	0.0	0.0	0.0	0.0	0.0	0.0	0.0	T	0.2	14.4
1981	4.1	T	0.3	0.0	0.0	0.0	0.0	0.0	0.0	0.0	T	2.4	6.8
1982	14.8	7.6	0.7	T	0.0	0.0	0.0	0.0	0.0	0.0	0.0	7.2	30.3
1983	1.2	27.2	T	T	0.0	0.0	0.0	0.0	0.0	0.0	T	T	28.4
1984	8.4	T	6.1	T	0.0	0.0	0.0	0.0	0.0	0.0	T	0.1	14.6
1985	9.1	0.4	T	0.7	0.0	0.0	0.0	0.0	0.0	0.0	0.0	0.7	10.9
1986	1.9	13.0	T	T	0.0	0.0	0.0	0.0	0.0	0.0	0.0	T	14.9
1987	25.1	10.1	T	T	0.0	0.0	0.0	0.0	0.0	0.0	6.0	0.5	41.7
1988	13.7	0.2	T	T	0.0	0.0	0.0	0.0	0.0	0.0	0.0	0.9	14.8
1989	6.0	1.1	0.3	0.0	0.0	0.0	0.0	0.0	0.0	0.0	3.8	10.2	21.4
1990	0.5	T	2.7	0.1	0.0	0.0	0.0	0.0	0.0	0.0	0.0	4.8	8.1
1991	4.2	0.1	0.3	0.0	0.0	0.0	0.0	0.0	0.0	0.0	T	T	4.6
1992	2.2	1.9	T	T	0.0	0.0	0.0	0.0	0.0	0.0	T	1.5	5.6
1993	1.4	8.8	12.7	T	0.0	0.0	0.0	0.0	0.0	0.0	T	2.9	25.8
1994	4.9	5.3	4.2	T	0.0	0.0	0.0	0.0	0.0	0.0	0.2	0.0	14.6
1995	0.3	7.5	0.2	0.0	0.0	0.0	0.0	0.0	0.0	0.0	1.0	2.3	11.3
1996	32.6	19.0	7.6	T	0.0	0.0	0.0	0.0	0.0	0.0	0.3	0.2	59.7
1997	5.0	7.1	2.7	T	0.0	0.0	0.0	0.0	0.0	0.0	0.0	0.4	15.2
1998	0.7	T	2.1	0.0	0.0	0.0	0.0	0.0	0.0	0.0	0.0	3.0	5.8
1999	4.0	0.6	7.6	0.0	0.0	0.0	0.0	0.0	0.0	0.0	0.0	0.2	12.4
2000	23.1	2.6	0.0	0.2	0.0	0.0	0.0	0.0	0.0	0.0	T	1.3	27.2
2001	3.7	3.7	T	T	0.0	0.0	0.0	0.0	0.0	0.0	0.0	0.0	7.4
2002	2.3	T	T	0.0	0.0	0.0	0.0	0.0	0.0	0.0	0.0	9.7	12.0
2003	5.3	40.5	2.6	T	0.0	0.0	0.0	0.0	0.0	T	0.0	9.6	58.0
2004	8.4	0.1	0.2	0.0	0.0	0.0	0.0	0.0	0.0	0.0	0.0	T	8.7
2005	7.6	10.0	0.4	0.0	0.0	0.0	0.0	0.0	0.0	0.0	0.5	6.0	24.5
2006	T	13.1	T	T	0.0	0.0	0.0	0.0	0.0	0.0	0.0	T	13.1
2007	0.9	8.5	1.4	0.2	0.0	0.0	0.0	0.0	0.0	0.0	T	4.8	15.8
2008	2.4	1.3	0.0	0.0	0.0	0.0	0.0	0.0	0.0	0.0	T	0.6	4.3
2009	2.1	0.6	5.8	T	0.0	0.0	0.0	0.0	0.0	0.0	0.0	20.1	28.6
2010	6.9	50.0	T	0.0	0.0	0.0	0.0	0.0	0.0	0.0	0.0	1.2	58.1
2011	10.7	2.5	T	0.0	0.0	0.0	0.0	0.0	0.0	T	0.0	T	13.2
2012	1.3	0.5	T	0.0	0.0	0.0	0.0	0.0	0.0	0.0	T	1.4	3.2
2013	2.9	0.5	3.2	T	0.0	0.0	0.0	0.0	0.0	0.0	T	2.9	9.5
2014	9.8	14.2	12.1	T	0.0	0.0	0.0	0.0	0.0	0.0	0.3	0.2	36.6
2015	5.9	14.6	7.7	0.0	0.0	0.0	0.0	0.0	0.0	0.0	0.0	T	28.2
2016	30.0	2.6	2.5	T	0.0	0.0	0.0	0.0	0.0	0.0	0.0	T	35.1
2017	0.7	T	2.3	0.0	0.0	0.0	0.0	0.0	0.0	0.0	0.0	4.3	7.3
2018	2.2	2.2	6.7	0.0	0.0	0.0	0.0	0.0	0.0	0.0	1.7	0.0	12.8
2019	7.8	6.1	2.7	0.0	0.0	0.0	0.0	0.0	0.0	0.0	T	0.3	16.9
2020	1.5	0.0	0.0	0.0	0.0	0.0	0.0	0.0	0.0	0.0	0.0	1.6	3.1
2021	4.3	5.0	0.0	T	0.0	0.0	0.0	0.0	0.0	0.0	T	T	9.3
2022	13.3	0.7	0.4	0.0	0.0	0.0	0.0	0.0	0.0	0.0	0.0	T	14.4
2023	T	0.2	T	0.0	0.0	0.0	0.0	0.0	0.0	0.0	T	T	0.2
2024	9.1	2.2	T	0.0	0.0	0.0	0.0	0.0	0.0	0.0	T	T	11.3
2025	8.9	3.8	0.0	0.0	0.0	0.0	0.0	0.0	0.0	0.0	T	2.0	14.7
2026	11.7	1.9	2.0	0.0	0.0								15.6
Year	Jan	Feb	Mar	Apr	May	Jun	Jul	Aug	Sep	Oct	Nov	Dec	Year Total
Average 1883-2025	6.3	6.8	4.0	0.3	T	0.0	0.0	0.0	0.0	T	0.6	3.4	21.5
NCEI Normal 1991-2020	6.4	7.5	2.8	T	0.0	0.0	0.0	0.0	0.0	T	0.1	2.5	19.3
Running Average 2001-2030	6.1	7.1	1.9	T	0.0	0.0	0.0	0.0	0.0	T	0.1	2.6	17.9
Maximum	32.6	50.0	25.6	9.8	T	0.0	0.0	0.0	0.0	2.5	9.7	20.4	59.7
Year	1996	2010	1892	1924	1963, 1923, 1893, 1891	All Months	All Months	All Months	All Months	1925	1898	1966	1996
Minimum	T	0.0	0.0	0.0	0.0	0.0	0.0	0.0	0.0	0.0	0.0	0.0	0.2
Year	2023+	2020, 1884	2025+	2025+	2025+	All Months	All Months	All Months	All Months	2025+	2022+	2018+	2023

**Baltimore - Seasonal Snowfall (July-June)**  
(including Trendline and Extreme)  
Period of Record: 1883-2026



**Baltimore - Calendar-Year Snowfall**  
(including Trendline and Extreme)  
Period of Record: 1884-2026



Data through 5/31/2026, Updated 6/1/2026

**BALTIMORE, MARYLAND**  
**AVERAGE SNOWFALL BY 30-YEAR PERIODS**

30-YEAR-AVERAGE PERIOD	JAN	FEB	MAR	APR	MAY	JUN	JUL	AUG	SEP	OCT	NOV	DEC	SEASON	WINTER (Dec-Feb)	SPRING (Mar-May)	SUMMER (Jun-Aug)	AUTUMN (Sep-Nov)
1891-1920	6.6	6.9	5.3	0.6	T	0.0	0.0	0.0	0.0	T	0.9	4.4	24.3	17.9	5.9	0.0	0.9
1901-1930	7.8	6.1	3.5	0.9	T	0.0	0.0	0.0	0.0	0.1	0.4	4.2	22.9	18.1	4.3	0.0	0.5
1911-1940	6.6	6.6	3.9	0.9	T	0.0	0.0	0.0	0.0	0.1	0.5	3.4	22.5	16.6	4.8	0.0	0.6
1921-1950	6.6	6.8	4.5	0.5	T	0.0	0.0	0.0	0.0	0.1	0.4	3.5	22.4	16.9	5.1	0.0	0.6
1931-1960	4.9	5.9	5.7	0.1	0.0	0.0	0.0	0.0	0.0	T	0.8	4.0	21.0	14.8	5.9	0.0	0.8
1941-1970	5.6	6.4	5.7	0.1	T	0.0	0.0	0.0	0.0	T	0.9	4.8	23.5	16.8	5.8	0.0	0.9
1951-1980	5.3	6.9	4.6	0.1	T	0.0	0.0	0.0	0.0	T	1.1	3.9	22.1	16.2	4.7	0.0	1.1
1961-1990	6.6	7.6	3.0	0.1	T	0.0	0.0	0.0	0.0	T	1.1	3.6	22.3	17.8	3.1	0.0	1.1
1971-2000	6.9	6.3	2.4	T	0.0	0.0	0.0	0.0	0.0	T	0.6	1.7	18.2	14.9	2.4	0.0	0.6
1981-2010	6.8	8.0	1.9	T	0.0	0.0	0.0	0.0	0.0	T	0.4	3.0	20.1	17.8	1.9	0.0	0.4
1991-2020	6.4	7.5	2.8	T	0.0	0.0	0.0	0.0	0.0	T	0.1	2.5	19.4	16.3	2.8	0.0	0.1
2001-2030 Running Avg	6.1	7.1	1.9	T	0.0	0.0	0.0	0.0	0.0	T	0.1	2.6	17.8	15.8	1.9	0.0	0.1
MAX OF AVERAGES thru 1991-2020	7.8	8.0	5.7	0.9	T	0.0	0.0	0.0	0.0	0.1	1.1	4.8	24.3	18.1	5.9	0.0	1.1
MAX. PERIOD	1901-1930	1981-2010	1941-1970+	1911-1940+	1961-1990+	All Periods	All Periods	All Periods	All Periods	1921-1950+	1961-1990+	1941-1970	1891-1920	1901-1930	1931-1960+	All Periods	1961-1990+
MIN OF AVERAGES thru 1991-2020	4.9	5.9	1.9	0.1	0.0	0.0	0.0	0.0	0.0	0.1	0.1	1.7	18.2	14.8	1.9	0.0	0.1
MIN. PERIOD	1931-1960	1931-1960	1981-2010	1991-2020+	1991-2020+	All Periods	All Periods	All Periods	All Periods	1991-2020+	1991-2020	1971-2000	1971-2000	1931-1960	1981-2010	All Periods	1991-2020

Data through 5/31/2026, Updated 6/1/2026

- DATA SOURCE:** 1) National Centers for Environmental Information (NCEI), State and Local Climatological Data publications: [Climatological Data - Maryland-Delaware-DC](#)  
[Local Climatological Data - Baltimore](#)
- 2) The Maryland Weather Service, Vol. 2, p. 230. The Johns Hopkins Press, Baltimore, 1907. [https://www.google.com/books/edition/Maryland\\_Weather\\_Service/-yPAAAMAAJ?hl=en](https://www.google.com/books/edition/Maryland_Weather_Service/-yPAAAMAAJ?hl=en)
- 3) National Weather Service (Baltimore-Washington) NOW Data: <https://www.weather.gov/wrh/Climate?wfo=lwx>
- 4) Applied Climate Information System (ACIS): <https://scacis.rcc-acis.org/>
- 5) National Weather Service (Baltimore-Washington): <https://www.weather.gov/media/lwx/Climate/bwisnow.pdf>
- NOTES:** 1) This archive covers the official National Weather Service locations in downtown Baltimore from July 1884 through July 1950, then Baltimore-Washington International Thurgood Marshall Airport (formerly Friendship International) from Aug. 1950 to the present.
- 2) Data table values in **bold red** indicate monthly or seasonal maxima, **bold blue** indicates minima only for the Annual and Seasonal totals.
- 3) *Italic values with this color background indicate current, incomplete periods.*
- 4) Cells with no values indicate missing or future data and are not included in calculations. Running averages are updated after each time period is complete.
- 5) Chart Trendlines are shown in **bright green** and are Polynomial (Order 4), with associated Equation and R-squared values.
- 6) Prior to July 1948, sleet was not included in total snowfall in the Climatological Data publications (per the 1964 Local Climatological Data - Annual Summary for Baltimore, page 2). These data tables have been revised to include both snow and sleet in the totals per the additional information in the Local Climatological Data publications, where available, so current standard National Weather Service protocol is followed. This may result in differing values than previously published.
- 7) All Hail data has been researched and removed, as it has been included under official Snowfall and Sleet (Ice Pellets) data for many years.
- 8) Snowfall data for the period July 1883 through February 1892 has not been verified using daily values and should be used with caution, per National Weather Service Forecast Office - Baltimore/Washington.