

MARYLAND STATEWIDE AVERAGE MINIMUM TEMPERATURES

1895-Present
(in degrees Fahrenheit)

Preliminary Data through 4/30/2026, Updated 5/13/2026

YEAR	JAN	FEB	MAR	APR	MAY	JUN	JUL	AUG	SEP	OCT	NOV	DEC	ANNUAL	WINTER (Dec-Feb)	SPRING (Mar-May)	SUMMER (Jun-Aug)	AUTUMN (Sep-Nov)
1895	20.6°	14.5°	29.8°	41.0°	50.2°	61.6°	61.0°	63.4°	59.2°	38.0°	34.7°	27.5°	41.8°		40.3°	62.0°	44.0°
1896	23.4°	24.9°	26.8°	44.6°	56.1°	59.8°	65.9°	62.8°	55.4°	42.5°	38.7°	24.8°	43.8°	25.3°	42.5°	62.8°	45.5°
1897	20.3°	26.4°	33.8°	39.4°	49.5°	57.7°	65.5°	61.4°	54.2°	46.4°	35.3°	28.4°	43.2°	23.8°	40.9°	61.5°	45.3°
1898	26.9°	23.6°	37.1°	38.5°	52.2°	60.3°	67.1°	66.2°	58.2°	46.8°	33.3°	25.0°	44.6°	26.3°	42.6°	64.5°	46.1°
1899	22.0°	17.1°	31.8°	40.0°	51.3°	62.4°	64.9°	63.8°	53.9°	46.4°	33.7°	25.4°	42.7°	21.4°	41.0°	63.7°	44.7°
1900	23.8°	21.7°	27.8°	40.7°	50.0°	61.0°	65.8°	66.6°	61.8°	50.7°	38.5°	25.5°	44.5°	23.6°	39.5°	64.5°	50.3°
1901	24.9°	18.3°	33.0°	39.6°	50.4°	59.5°	68.7°	65.7°	55.8°	42.5°	29.8°	23.3°	42.6°	22.9°	41.0°	64.6°	42.7°
1902	21.5°	19.6°	34.1°	40.2°	51.4°	58.3°	64.7°	60.1°	54.7°	46.5°	39.8°	25.1°	43.0°	21.5°	41.9°	61.0°	47.0°
1903	23.1°	25.2°	38.7°	41.3°	50.9°	56.8°	63.8°	62.4°	54.8°	45.9°	29.3°	21.2°	42.8°	25.5°	43.6°	61.0°	43.3°
1904	16.6°	16.9°	31.0°	37.7°	51.1°	59.5°	63.2°	61.4°	55.6°	40.8°	31.4°	20.2°	40.5°	18.2°	39.9°	61.4°	42.6°
1905	19.0°	16.0°	33.0°	40.2°	52.8°	60.0°	65.4°	62.5°	55.5°	44.4°	31.5°	27.0°	42.3°	18.4°	42.0°	62.6°	43.8°
1906	29.7°	22.2°	28.7°	40.7°	50.3°	61.9°	64.6°	67.6°	60.6°	46.6°	34.6°	27.1°	44.6°	26.3°	39.9°	64.7°	47.3°
1907	25.7°	18.1°	34.4°	36.0°	47.0°	54.6°	64.1°	61.2°	58.5°	38.5°	34.1°	28.1°	41.7°	23.6°	39.1°	60.0°	43.7°
1908	23.5°	20.7°	35.2°	41.7°	53.4°	58.7°	65.8°	61.7°	53.7°	45.6°	32.6°	27.1°	43.3°	24.1°	43.4°	62.1°	44.0°
1909	25.9°	30.9°	30.8°	40.9°	50.4°	62.1°	61.2°	60.2°	54.5°	39.3°	37.3°	21.8°	42.9°	28.0°	40.7°	61.2°	43.7°
1910	23.2°	23.9°	36.4°	43.7°	49.1°	58.4°	65.1°	62.1°	58.7°	47.1°	31.5°	20.2°	43.3°	23.0°	43.1°	61.9°	45.8°
1911	27.3°	27.0°	28.6°	37.8°	53.5°	60.4°	65.3°	64.2°	59.6°	46.3°	32.2°	31.0°	44.4°	24.8°	40.0°	63.3°	46.0°
1912	14.7°	19.7°	30.1°	42.6°	51.6°	58.0°	63.8°	61.0°	59.2°	45.2°	34.7°	27.8°	42.4°	21.8°	41.4°	60.9°	46.4°
1913	30.9°	23.9°	36.0°	42.7°	50.0°	59.0°	64.2°	62.1°	55.4°	48.5°	35.6°	29.4°	44.8°	27.5°	42.9°	61.8°	46.5°
1914	26.6°	18.4°	27.9°	39.6°	51.6°	59.8°	63.3°	63.1°	51.5°	48.0°	32.0°	24.5°	42.2°	24.8°	39.7°	62.1°	43.8°
1915	25.4°	28.2°	27.0°	42.9°	49.4°	57.5°	63.4°	62.7°	57.5°	46.9°	33.3°	24.6°	43.2°	26.0°	39.8°	61.2°	45.9°
1916	27.6°	22.5°	26.0°	39.9°	53.7°	56.6°	66.2°	63.2°	53.0°	43.0°	33.6°	24.5°	42.5°	24.9°	39.9°	62.0°	43.2°
1917	23.8°	21.0°	31.7°	40.9°	46.2°	59.6°	65.8°	62.8°	52.0°	39.2°	29.6°	18.3°	40.9°	23.1°	39.6°	62.7°	40.3°
1918	12.9°	22.4°	33.2°	40.5°	55.7°	57.8°	61.2°	65.0°	51.5°	47.3°	34.0°	31.6°	42.8°	17.9°	43.1°	61.3°	44.3°
1919	25.3°	26.3°	34.3°	39.6°	51.7°	60.8°	65.1°	61.3°	55.7°	52.4°	35.1°	20.4°	44.0°	27.7°	41.9°	62.4°	47.7°
1920	18.9°	23.1°	30.8°	40.1°	46.2°	58.4°	62.3°	64.5°	57.0°	46.9°	35.3°	29.8°	42.8°	20.8°	39.0°	61.7°	46.4°
1921	26.1°	27.7°	41.0°	45.8°	50.4°	60.0°	67.7°	60.5°	61.8°	42.8°	37.2°	26.8°	45.7°	27.9°	45.7°	62.7°	47.3°
1922	20.8°	27.4°	34.3°	42.4°	52.8°	63.0°	65.1°	61.5°	57.2°	46.2°	35.5°	27.4°	44.5°	25.0°	43.2°	63.2°	46.3°
1923	26.4°	21.9°	30.9°	39.2°	47.9°	61.9°	63.2°	62.4°	58.0°	42.8°	34.2°	33.7°	43.5°	25.2°	39.3°	62.5°	45.0°
1924	22.5°	24.0°	31.3°	38.2°	48.8°	59.4°	62.5°	62.2°	53.4°	42.3°	34.0°	25.7°	42.0°	26.7°	39.4°	61.4°	43.2°
1925	21.4°	29.6°	33.3°	42.1°	45.5°	63.1°	64.0°	59.8°	60.5°	42.3°	32.8°	27.5°	43.5°	25.6°	40.3°	62.3°	45.2°
1926	22.4°	25.2°	27.1°	37.5°	47.9°	56.1°	64.2°	65.3°	58.2°	45.3°	32.1°	23.6°	42.1°	25.0°	37.5°	61.9°	45.2°
1927	23.5°	30.1°	34.3°	38.0°	50.9°	55.3°	63.4°	58.8°	55.0°	46.6°	38.9°	27.9°	43.6°	25.7°	41.1°	59.2°	46.8°
1928	23.1°	25.5°	31.3°	38.1°	48.4°	59.4°	64.8°	65.3°	53.7°	45.7°	36.9°	26.7°	43.2°	25.5°	39.3°	63.2°	45.4°
1929	23.2°	22.6°	36.6°	43.5°	50.2°	58.7°	62.7°	59.7°	56.4°	42.1°	37.3°	27.3°	43.4°	24.2°	43.4°	60.4°	45.3°
1930	24.8°	27.7°	30.7°	38.5°	51.7°	60.0°	64.4°	60.8°	60.3°	41.0°	34.5°	25.2°	43.3°	26.6°	40.3°	61.7°	45.3°
1931	25.0°	26.5°	31.4°	39.5°	50.6°	59.4°	66.9°	64.0°	60.7°	46.4°	40.3°	33.1°	45.3°	25.6°	40.5°	63.4°	49.1°
1932	35.6°	29.5°	28.3°	37.8°	50.0°	59.7°	63.7°	61.9°	55.6°	46.0°	32.4°	27.2°	44.0°	32.7°	38.7°	61.8°	44.7°
1933	30.8°	25.9°	31.2°	41.3°	54.4°	60.1°	62.9°	64.2°	60.4°	42.4°	32.1°	26.6°	44.4°	28.0°	42.3°	62.4°	45.0°
1934	27.2°	11.5°	27.2°	39.4°	51.7°	63.7°	67.1°	62.1°	59.4°	42.8°	36.7°	25.8°	42.9°	21.8°	39.4°	64.3°	46.3°
1935	21.7°	22.8°	35.7°	39.5°	47.8°	59.2°	66.5°	63.9°	54.0°	43.4°	39.7°	22.5°	43.1°	23.4°	41.0°	63.2°	45.7°
1936	19.3°	16.4°	36.2°	38.2°	50.9°	59.4°	64.4°	64.7°	58.4°	46.8°	32.6°	28.7°	43.0°	19.4°	41.8°	62.8°	45.9°
1937	33.8°	25.4°	29.3°	40.8°	50.1°	61.7°	64.3°	65.6°	52.2°	43.0°	33.4°	25.4°	43.8°	29.3°	40.1°	63.9°	42.9°
1938	24.6°	28.6°	34.8°	42.7°	50.6°	59.0°	67.0°	64.7°	56.0°	43.5°	34.8°	27.2°	44.3°	26.2°	42.7°	63.1°	44.8°
1939	25.6°	28.8°	32.7°	40.0°	51.6°	61.9°	63.6°	65.5°	57.0°	45.2°	32.2°	28.7°	44.4°	27.2°	41.4°	63.7°	44.8°
1940	12.9°	24.7°	28.5°	37.1°	50.7°	60.7°	63.0°	62.6°	52.4°	41.8°	35.9°	30.5°	41.7°	22.1°	38.8°	62.1°	43.4°
1941	24.2°	21.9°	25.9°	43.1°	49.7°	59.4°	65.4°	60.8°	56.9°	49.8°	34.3°	29.8°	43.4°	25.5°	39.6°	61.9°	47.0°
1942	22.3°	22.5°	33.8°	41.8°	54.3°	62.0°	65.4°	63.1°	56.7°	47.2°	35.7°	23.9°	44.1°	24.9°	43.3°	63.5°	46.5°
1943	25.3°	24.8°	30.4°	36.0°	53.0°	65.9°	64.7°	62.8°	52.7°	43.2°	32.3°	23.5°	42.9°	24.7°	39.8°	64.5°	42.7°
1944	24.9°	25.8°	29.9°	39.5°	55.7°	60.8°	63.7°	62.1°	58.2°	43.1°	35.1°	23.4°	43.5°	24.7°	41.7°	62.2°	45.5°
1945	20.2°	25.1°	39.4°	43.7°	48.5°	59.9°	64.7°	60.8°	60.5°	42.7°	36.5°	22.6°	43.7°	22.9°	43.9°	61.8°	46.6°
1946	25.2°	25.6°	37.9°	39.8°	51.5°	57.9°	62.1°	59.3°	55.1°	46.4°	38.0°	27.9°	43.9°	24.5°	43.1°	59.8°	46.5°
1947	29.6°	19.1°	26.6°	41.0°	50.2°	58.0°	62.7°	65.5°	57.2°	49.0°	33.8°	24.1°	43.1°	25.5°	39.3°	62.1°	46.7°
1948	17.8°	22.6°	33.8°	41.7°	51.3°	59.6°	64.7°	62.3°	54.6°	43.3°	39.5°	28.4°	43.3°	21.5°	42.3°	62.2°	45.8°
1949	31.4°	30.6°	32.9°	40.3°	50.9°	61.5°	68.4°	64.3°	53.2°	50.2°	34.3°	28.3°	45.5°	30.1°	41.4°	64.7°	45.9°
1950	33.8°	26.8°	28.1°	37.2°	50.8°	58.6°	62.9°	61.3°	55.3°	46.8°	33.8°	23.5°	43.2°	29.6°	38.7°	60.9°	45.3°
1951	26.0°	25.2°	32.2°	40.3°	49.6°	59.8°	64.5°	61.7°	55.1°	47.6°	30.7°	27.5°	43.4°	24.9°	40.7°	62.0°	44.5°
1952	28.6°	28.4°	31.1°	43.6°	49.9°	62.0°	66.4°	63.4°	54.2°	39.8°	36.0°	28.4°	44.3°	28.2°	41.5°	63.9°	43.3°
1953	29.7°	29.0°	34.2°	42.1°	55.7°	60.3°	63.9°	61.4°	54.6°	44.3°	33.2°	29.1°	44.8°	29.0°	44.0°	61.9°	44.0°
1954	23.4°	29.0°	31.4°	44.5°	48.8°	59.3°	62.4°	62.4°	57.3°	48.0°	33.1°	26.3°	43.8°	27.2°	41.6°	61.4°	46.1°
1955	23.1°	23.5°	33.8°	44.6°	52.3°	56.2°	68.5°	67.0°	57.1°	45.4°	31.7°	21.6°	43.7°	24.3°	43.6°	63.9°	44.7°
1956	23.5°	28.6°	30.1°	39.0°	48.0°	59.4°	64.2°	62.1°	54.1°	47.3°	35.0°	33.8°	43.8°	24.6°	39.0°	61.9°	45.5°
1957	21.3°	29.6°	32.9°	44.2°	51.6°	62.7°	62.5°	59.7°	58.9°	41.7°	36.8°	29.7°	44.3°	28.2°	42.9°	61.6°	45.8°
1958	23.0°	20.0°	30.8°	42.5°	50.4°	56.9°	66.8°	62.4°	54.0°	44.7°	36.4°	19.3°	42.3°	24.2°	41.2°	62.0°	45.0°
1959	21.0°	24.1°	30.1°	43.3°	54.2°	60.2°	65.7°	66.3°	57.9°	49.1°	33.8°	29.6°	44.6°	21.5°	42.5°	64.1°	46.9°
1960	27.3°	26.6°	22.4°	44.1°	49.7°	5											

1974	29.9°	23.9°	34.2°	42.8°	50.8°	57.7°	63.2°	63.9°	55.5°	40.1°	35.3°	29.3°	43.9°	27.6°	42.6°	61.6°	43.6°
1975	27.4°	27.6°	31.6°	37.8°	53.9°	61.2°	64.0°	64.8°	55.4°	48.3°	39.0°	27.6°	44.9°	28.1°	41.1°	63.3°	47.6°
1976	20.9°	30.3°	35.5°	41.9°	49.4°	61.8°	62.6°	60.4°	54.2°	42.1°	28.8°	21.6°	42.5°	26.3°	42.3°	61.6°	41.7°
1977	12.4°	23.2°	37.1°	42.8°	52.3°	57.5°	65.0°	64.5°	59.6°	43.8°	39.8°	25.2°	43.6°	19.1°	44.1°	62.3°	47.7°
1978	19.8°	15.7°	29.8°	40.2°	50.3°	59.2°	63.1°	66.8°	56.6°	41.8°	37.4°	27.8°	42.4°	20.2°	40.1°	63.0°	45.3°
1979	22.6°	14.8°	34.0°	41.5°	52.5°	56.7°	63.8°	63.8°	57.4°	44.3°	39.2°	29.3°	43.3°	21.7°	42.7°	61.4°	47.0°
1980	24.9°	20.8°	30.6°	43.1°	52.6°	56.8°	65.2°	65.6°	59.1°	43.1°	33.1°	24.7°	43.3°	25.0°	42.1°	62.5°	45.1°
1981	17.9°	26.7°	30.2°	44.3°	49.7°	62.1°	64.9°	60.7°	55.4°	41.7°	35.4°	26.1°	42.9°	23.1°	41.4°	62.6°	44.2°
1982	16.5°	26.0°	31.9°	37.8°	52.9°	58.9°	65.1°	60.1°	55.3°	45.1°	37.9°	33.4°	43.4°	22.9°	40.9°	61.4°	46.1°
1983	26.0°	25.2°	35.7°	40.7°	49.5°	59.6°	64.4°	64.4°	55.4°	46.8°	36.3°	24.8°	44.1°	28.2°	42.0°	62.8°	46.2°
1984	19.3°	30.8°	28.6°	41.0°	50.7°	60.9°	63.7°	64.5°	53.0°	52.2°	32.9°	33.8°	44.3°	25.0°	40.1°	63.0°	46.0°
1985	19.8°	25.6°	34.3°	43.7°	52.9°	58.8°	64.2°	63.3°	56.1°	48.5°	43.6°	23.9°	44.6°	26.4°	43.6°	62.1°	49.4°
1986	22.8°	25.5°	32.1°	41.9°	52.6°	60.1°	66.8°	61.9°	57.4°	47.0°	34.9°	28.8°	44.3°	24.1°	42.2°	62.9°	46.4°
1987	23.7°	23.4°	32.8°	41.6°	52.2°	62.3°	67.5°	63.9°	58.5°	38.8°	36.7°	30.2°	44.3°	25.3°	42.2°	64.6°	44.7°
1988	18.4°	25.3°	32.4°	40.6°	51.6°	58.7°	66.6°	66.7°	54.6°	39.5°	35.8°	25.8°	43.0°	24.6°	41.5°	64.0°	43.3°
1989	28.0°	26.2°	32.9°	39.9°	50.8°	63.9°	65.7°	64.5°	58.0°	45.8°	34.8°	16.0°	43.9°	26.7°	41.2°	64.7°	46.2°
1990	31.2°	30.9°	35.8°	42.3°	50.9°	60.0°	66.1°	63.7°	55.6°	48.6°	36.7°	31.2°	46.1°	26.0°	43.0°	63.3°	47.0°
1991	25.4°	29.0°	35.8°	43.8°	57.0°	60.7°	67.4°	64.9°	55.7°	44.9°	35.6°	30.0°	45.9°	28.5°	45.5°	64.3°	45.4°
1992	25.9°	28.0°	32.0°	41.4°	48.2°	57.4°	66.1°	60.8°	57.0°	42.0°	37.8°	29.4°	43.8°	28.0°	40.5°	61.4°	45.6°
1993	29.2°	22.0°	30.5°	40.7°	52.7°	59.7°	67.5°	64.5°	57.8°	43.9°	35.1°	26.6°	44.2°	26.9°	41.3°	63.9°	45.6°
1994	17.7°	23.2°	31.9°	45.6°	47.5°	63.0°	67.6°	61.6°	54.9°	42.6°	39.3°	31.6°	43.9°	22.5°	41.7°	64.1°	45.6°
1995	29.3°	22.4°	34.5°	40.3°	51.1°	61.5°	67.4°	65.4°	56.1°	47.0°	31.7°	24.4°	44.3°	27.8°	42.0°	64.8°	44.9°
1996	22.2°	25.5°	28.6°	42.1°	50.5°	61.9°	64.1°	62.5°	57.9°	45.3°	31.6°	31.6°	43.7°	24.0°	40.4°	62.8°	44.9°
1997	24.3°	30.6°	34.6°	39.2°	46.9°	58.2°	64.5°	61.6°	55.5°	44.7°	35.3°	29.2°	43.7°	28.8°	40.2°	61.4°	45.2°
1998	32.1°	32.3°	35.4°	43.5°	55.1°	61.0°	64.7°	64.0°	59.8°	46.2°	35.3°	32.1°	46.8°	31.2°	44.7°	63.2°	47.1°
1999	26.2°	27.6°	30.8°	41.5°	51.0°	60.3°	67.6°	64.2°	57.8°	43.2°	40.2°	29.9°	45.0°	28.6°	41.1°	64.0°	47.1°
2000	23.0°	28.1°	36.7°	42.4°	53.7°	62.4°	62.5°	63.4°	55.7°	45.1°	33.3°	20.5°	43.9°	27.0°	44.3°	62.8°	44.7°
2001	23.7°	28.1°	30.9°	42.6°	51.3°	62.0°	61.6°	66.2°	54.4°	43.8°	38.5°	33.1°	44.7°	24.1°	41.6°	63.3°	45.6°
2002	29.7°	28.2°	34.5°	44.8°	50.1°	61.6°	66.6°	66.1°	58.5°	48.0°	35.9°	25.8°	45.8°	30.3°	43.1°	64.8°	47.5°
2003	21.0°	23.2°	33.2°	41.7°	51.1°	60.2°	66.2°	67.1°	58.9°	43.7°	40.4°	28.1°	44.6°	23.3°	42.0°	64.5°	47.7°
2004	19.9°	24.8°	35.4°	44.3°	58.8°	60.9°	66.4°	64.2°	59.3°	46.3°	38.8°	28.2°	45.6°	24.3°	46.2°	63.8°	48.1°
2005	25.6°	26.9°	30.7°	42.8°	47.5°	62.5°	68.1°	67.4°	59.1°	49.0°	37.2°	25.4°	45.2°	26.9°	40.3°	66.0°	48.4°
2006	31.7°	26.6°	33.5°	44.0°	50.2°	61.4°	67.8°	66.3°	56.3°	44.7°	40.0°	32.3°	46.2°	27.9°	42.6°	65.2°	47.0°
2007	29.7°	19.8°	33.1°	40.7°	52.1°	61.6°	64.3°	66.0°	57.7°	52.3°	36.0°	30.4°	45.3°	27.3°	42.0°	64.0°	48.7°
2008	26.7°	27.2°	33.8°	44.9°	48.8°	63.0°	65.6°	61.6°	58.8°	43.8°	35.9°	29.3°	45.0°	28.1°	42.5°	63.4°	46.2°
2009	21.2°	26.6°	32.9°	43.3°	53.3°	61.4°	63.2°	66.6°	57.3°	45.8°	41.0°	27.3°	45.0°	25.7°	43.2°	63.7°	48.0°
2010	24.3°	23.4°	37.4°	45.0°	54.8°	65.6°	67.8°	66.3°	58.5°	47.3°	35.9°	23.6°	45.8°	25.0°	45.7°	66.6°	47.2°
2011	22.0°	27.0°	33.6°	46.3°	55.4°	63.2°	68.5°	64.9°	61.0°	46.1°	38.8°	32.2°	46.6°	24.2°	45.1°	65.5°	48.6°
2012	27.8°	30.7°	41.4°	42.4°	57.3°	60.3°	69.4°	66.1°	57.0°	47.8°	33.4°	33.9°	47.3°	30.2°	47.0°	65.3°	46.1°
2013	27.9°	26.5°	31.1°	43.0°	52.2°	63.0°	69.0°	63.2°	54.5°	48.3°	33.5°	29.9°	45.2°	29.4°	42.1°	65.1°	45.4°
2014	17.5°	23.6°	27.5°	41.2°	53.0°	62.0°	64.6°	61.6°	58.0°	48.5°	33.2°	32.0°	43.6°	23.7°	40.6°	62.7°	46.6°
2015	22.6°	15.3°	28.5°	42.5°	56.3°	64.0°	66.5°	63.1°	60.7°	45.1°	40.2°	40.0°	45.4°	23.3°	42.4°	64.5°	48.7°
2016	22.5°	27.9°	38.3°	41.1°	52.0°	61.9°	68.5°	68.0°	62.0°	49.0°	36.4°	29.5°	46.4°	30.1°	43.8°	66.1°	49.1°
2017	31.3°	32.6°	32.9°	48.8°	52.6°	61.9°	67.9°	63.4°	58.4°	50.7°	35.7°	26.6°	46.9°	31.1°	44.8°	64.4°	48.3°
2018	21.2°	32.4°	30.3°	40.0°	58.2°	62.6°	66.3°	68.0°	65.6°	49.9°	35.7°	31.0°	46.8°	26.7°	42.8°	65.6°	50.4°
2019	25.4°	28.6°	32.2°	46.9°	57.3°	62.4°	68.1°	65.5°	60.1°	50.7°	32.7°	30.3°	46.7°	28.3°	45.5°	65.3°	47.8°
2020	30.7°	31.8°	39.3°	41.4°	50.8°	62.2°	69.6°	67.8°	57.8°	49.0°	40.0°	29.9°	47.5°	30.9°	43.8°	66.5°	48.9°
2021	27.9°	27.3°	35.9°	43.4°	50.4°	62.9°	67.1°	67.8°	59.4°	53.8°	33.8°	34.0°	47.0°	28.4°	43.2°	65.9°	49.0°
2022	22.0°	27.1°	35.5°	42.1°	54.7°	61.2°	68.0°	66.4°	58.2°	44.2°	38.4°	26.8°	45.4°	27.7°	44.1°	65.2°	46.9°
2023	33.7°	32.3°	34.5°	45.5°	49.3°	58.1°	68.2°	65.3°	59.6°	48.5°	34.1°	33.7°	46.9°	30.9°	43.1°	63.9°	47.4°
2024	28.7°	30.2°	37.8°	46.1°	56.4°	63.3°	69.0°	64.6°	59.5°	45.5°	39.8°	29.0°	47.5°	30.9°	46.8°	65.6°	48.3°
2025	20.6°	27.6°	37.2°	45.8°	55.3°	64.5°	70.2°	61.5°	58.8°	46.2°	36.2°	25.5°	45.8°	25.7°	46.1°	65.4°	47.1°
2026	21.2°	24.1°	37.2°	46.5°										23.6°			
YEAR	JAN	FEB	MAR	APR	MAY	JUN	JUL	AUG	SEP	OCT	NOV	DEC	ANNUAL	WINTER (Dec-Feb)	SPRING (Mar-May)	SUMMER (Jun-Aug)	AUTUMN (Sep-Nov)
AVERAGE 1895-2025	24.0°	24.8°	32.5°	41.4°	51.3°	60.2°	65.1°	63.4°	56.8°	45.3°	35.4°	27.3°	44.0°	25.4°	41.7°	62.9°	45.8°
MAXIMUM	35.6°	32.6°	41.4°	48.8°	58.8°	65.9°	70.2°	68.0°	65.6°	53.8°	43.6°	40.0°	47.5°	32.7°	47.0°	66.6°	50.4°
MAX. YEAR	1932	2017	2012	2017	2004	1943	2025	2018, 2016	2018	2021	1985	2015	2024, 2020	1932	2012	2010	2018
MINIMUM	12.4°	11.5°	22.4°	36.0°	45.1°	54.6°	61.0°	58.8°	51.5°	38.0°	28.8°	16.0°	40.5°	17.9°	37.5°	59.2°	40.3°
MIN. YEAR	1977	1934	1960	1943, 1907	1967	1907	1895	1927	1918, 1914	1895	1976	1989	1904	1918	1926	1927	1917

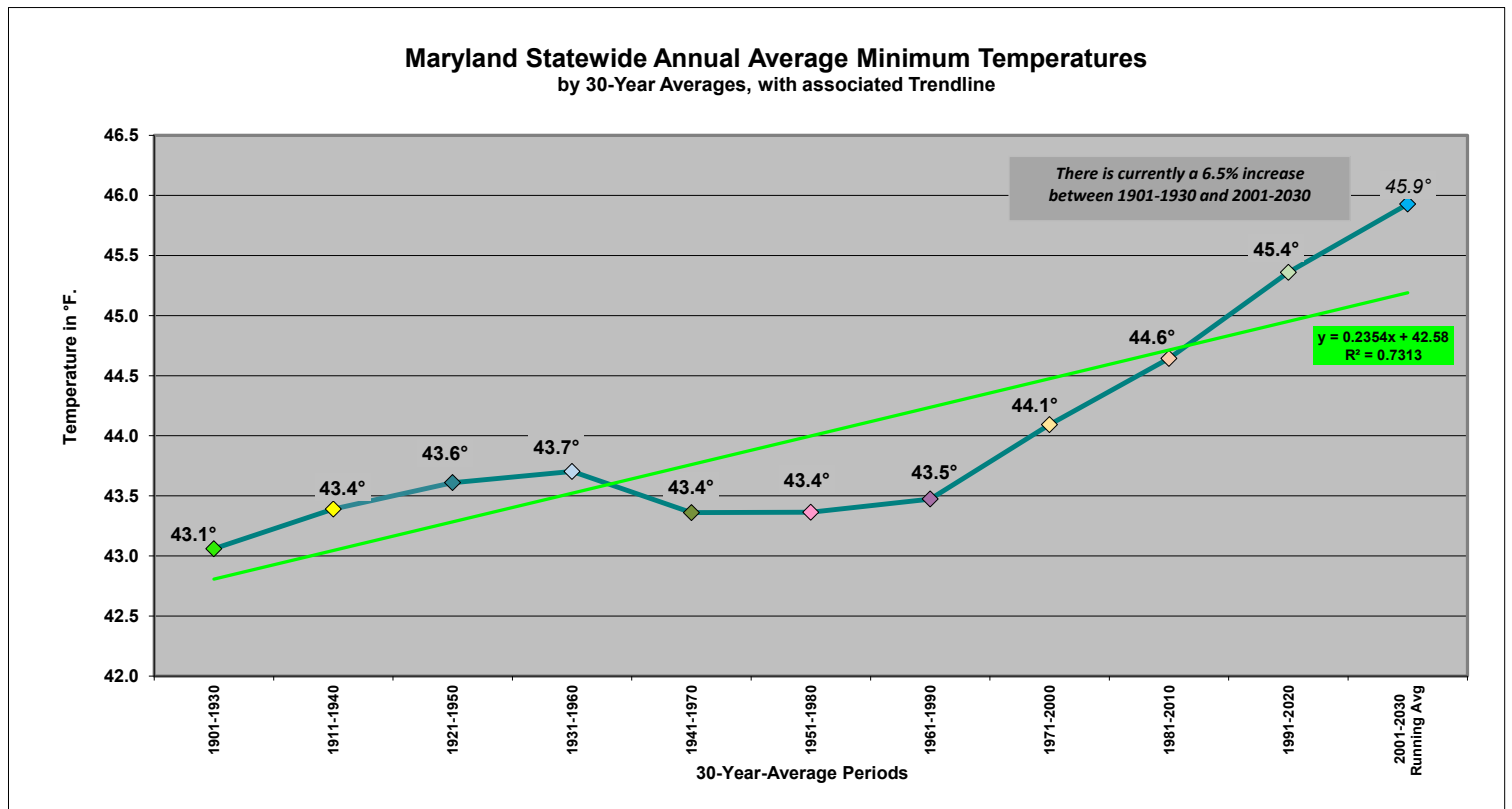
NOTES: 1) Nine of Maryland's warmest Monthly Minimum Temperatures have occurred since 2004; the warmest Annual Average Minimum Temperature was recorded in 2020 and 2024; the warmest Spring, Summer, and Autumn have all happened since 2010.

2) July 2025 is the only month to have a Maryland State Average Minimum Temperature of $\geq 70.0^\circ$.

MARYLAND STATEWIDE 30-YEAR AVERAGE MINIMUM TEMPERATURES

AVERAGE 30-YEAR PERIOD	JAN	FEB	MAR	APR	MAY	JUN	JUL	AUG	SEP	OCT	NOV	DEC	ANNUAL	WINTER (Dec-Feb)	SPRING (Mar-May)	SUMMER (Jun-Aug)	AUTUMN (Sep-Nov)
1895-1924	23.3°	22.9°	32.2°	40.6°	50.9°	59.5°	64.5°	62.9°	56.3°	44.9°	34.1°	25.8°	43.1°	24.0°	41.2°	62.3°	45.1°
1901-1930	23.4°	23.5°	32.4°	40.4°	50.4°	59.2°	64.3°	62.4°	56.3°	44.6°	34.0°	25.8°	43.1°	24.2°	41.1°	61.9°	45.0°
1911-1940	24.1°	24.5°	31.7°	40.2°	50.4°	59.7°	64.4°	62.8°	56.4°	44.7°	34.6°	27.0°	43.4°	25.1°	40.8°	62.3°	45.3°
1921-1950	24.8°	24.9°	32.2°	40.1°	50.6°	60.2°	64.5°	62.6°	56.7°	44.7°	35.2°	26.8°	43.6°	25.6°	41.0°	62.4°	45.5°
1931-1960	25.3°	25.0°	31.4°	41.0°	51.2°	60.1°	64.7°	63.1°	56.3°	45.2°	34.8°	26.5°	43.7°	25.7°	41.2°	62.6°	45.4°
1941-1970	23.7°	24.5°	31.4°	41.2°	50.9°	59.7°	64.4°	62.6°	55.8°	45.1°	35.0°	25.9°	43.4°	24.7°	41.2°	62.2°	45.3°
1951-1980	22.9°	24.0°	31.9°	41.4°	50.7°	59.4°	64.3°	63.1°	56.3°	44.6°	35.2°	26.7°	43.4°	24.5°	41.3°	62.2°	45.3°
1961-1990	22.1°	24.0°	32.5°	40.9°	50.8°	59.7°	64.5°	63.2°	56.2°	44.6°	36.0°	27.1°	43.5°	24.2°	41.4°	62.5°	45.6°
1971-2000	23.6°	25.4°	33.0°	41.4°	51.3°	60.2°	65.2°	63.5°	56.7°	44.8°	36.0°	28.0°	44.1°	25.7°	41.9°	62.9°	45.8°
1981-2010	24.4°	26.3°	33.1°	42.3°	51.5°	61.1°	65.7°	64.1°	56.9°	45.5°	36.7°	28.1°	44.6°	26.3°	42.3°	63.6°	46.3°
1991-2020	25.3°	26.7°	33.4°	42.9°	52.6°	61.7°	66.5°	64.7°	58.1°	46.5°	36.5°	29.5°	45.4°	27.1°	43.0°	64.3°	47.0°
2001-2030 Running Avg	25.3°	26.9°	34.2°	43.7°	53.2°	62.1°	67.1°	65.4°	58.8°	47.5°	36.9°	29.9°	45.9°	27.2°	43.6°	64.9°	47.7°
MAXIMUM through 1991-2020	25.3°	26.7°	33.4°	42.9°	52.6°	61.7°	66.5°	64.7°	58.1°	46.5°	36.7°	29.5°	45.4°	27.1°	43.0°	64.3°	47.0°
MINIMUM through 1991-2020	22.1°	22.5°	31.4°	40.1°	50.4°	59.2°	64.3°	62.4°	55.8°	44.6°	34.0°	25.8°	43.1°	24.0°	40.8°	61.9°	45.0°
MAX. 30-YEAR PERIOD	1991-2020, 1931-1960	1991-2020	1991-2020	1991-2020	1991-2020	1991-2020	1991-2020	1991-2020	1991-2020	1991-2020	1981-2010	1991-2020	1991-2020	1991-2020	1991-2020	1991-2020	1991-2020
MIN. 30-YEAR PERIOD	1961-1990	1895-1924	1941-1970, 1931-1960	1921-1950	1911-1940, 1901-1930	1901-1930	1951-1980, 1901-1930	1901-1930	1941-1970	1961-1990, 1951-1980, 1901-1930	1901-1930	1901-1930, 1895-1924	1901-1930, 1895-1924	1895-1924	1911-1940	1901-1930	1901-1930

- NOTES:** 1) Maximum and Minimum values now include the recently completed 30-year period, 1991-2020.
 2) The non-decadal 30-year period of 1895-1924 (which greatly overlaps the decadal period 1901-1930) is included to cover the entire period of state data available.
 3) These tables are created by the 10th day of the month and are subsequently updated as new data become available.
 4) The 30-Year Average for 2001-2030 is a running average for the individual months but not for the Annual or Seasonal totals until each of those periods is complete. The Maximum and Minimum of Averages are updated when each month, season, and year is complete.

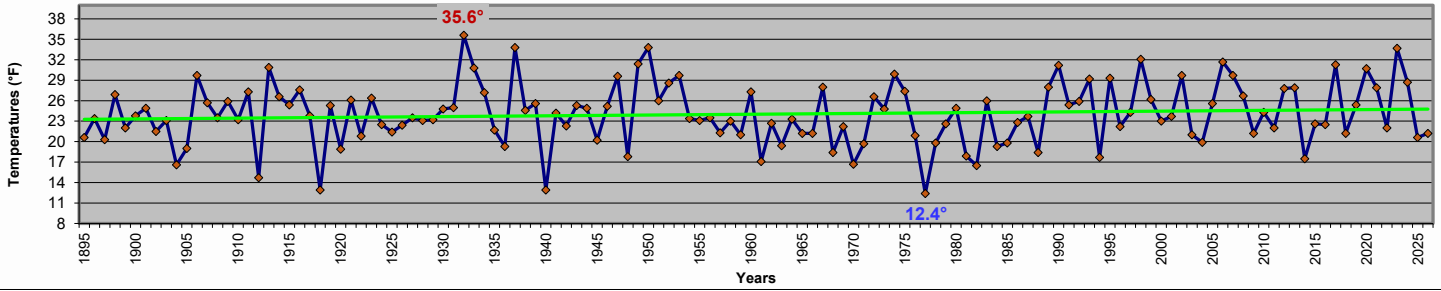


NOTE: Statewide 30-Year-Average Chart Trendline, shown in bright green, is Linear, with associated equation and R-Squared values portrayed.

MARYLAND STATEWIDE MONTHLY AVERAGE MINIMUM TEMPERATURES

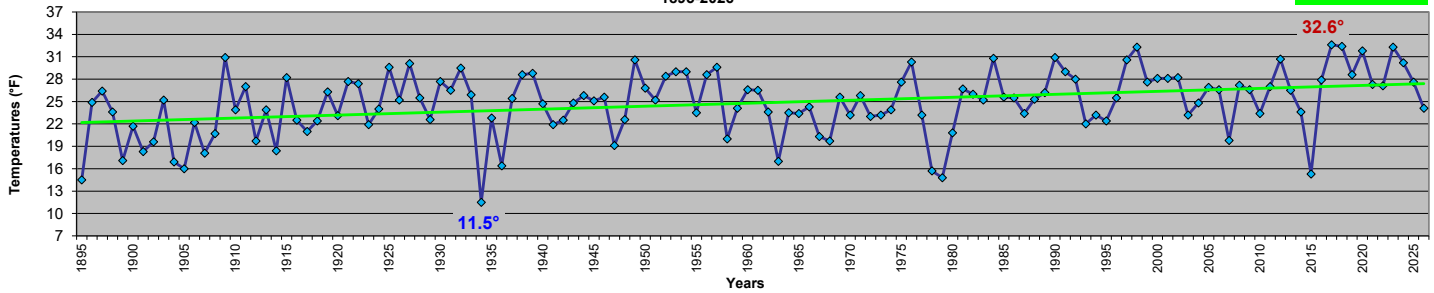
Maryland - January Average Minimum Temperatures
1895-2026

$y = 0.0114x + 23.258$
 $R^2 = 0.0095$



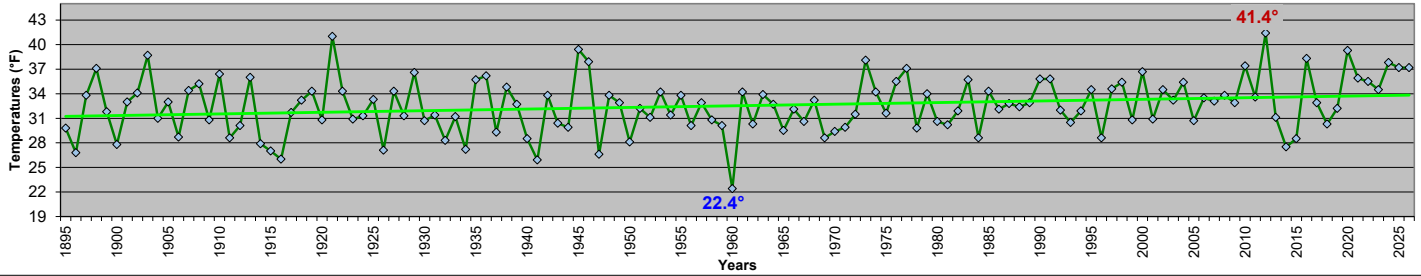
Maryland - February Average Minimum Temperatures
1895-2026

$y = 0.0398x + 22.148$
 $R^2 = 0.131$



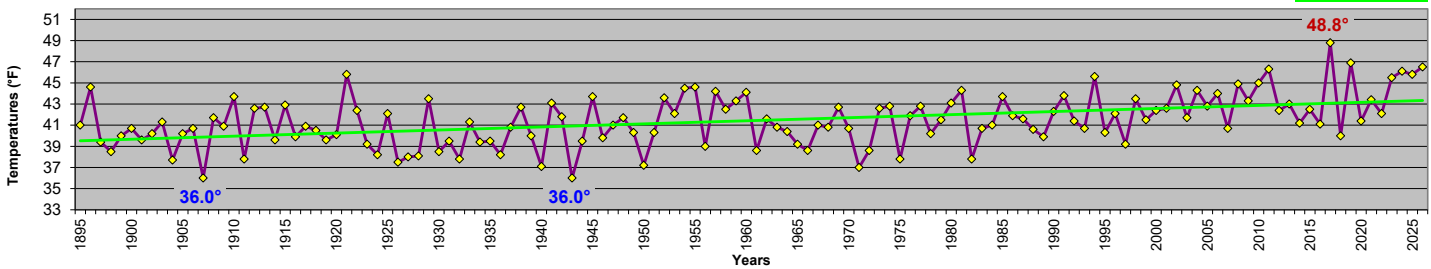
Maryland - March Average Minimum Temperatures
1895-2026

$y = 0.0198x + 31.218$
 $R^2 = 0.0516$



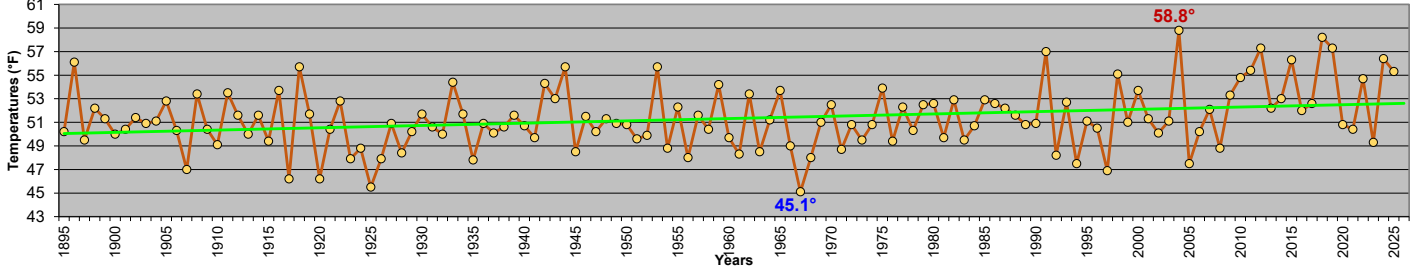
Maryland - April Average Minimum Temperatures
1895-2025

$y = 0.0291x + 39.496$
 $R^2 = 0.2094$



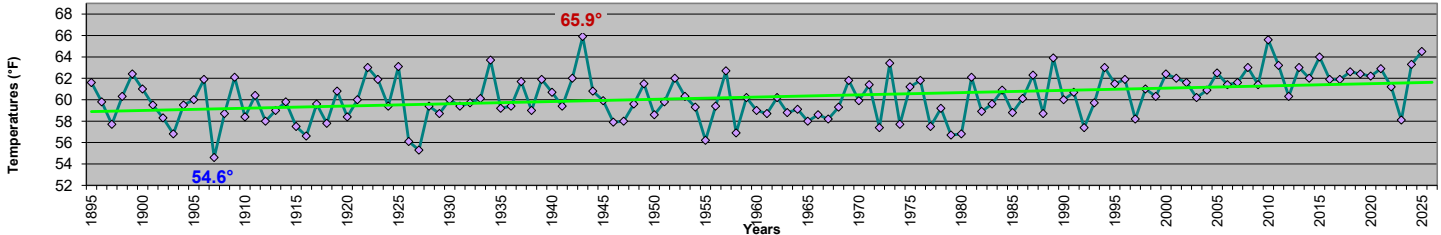
Maryland - May Average Minimum Temperatures
1895-2025

$y = 0.0195x + 50.03$
 $R^2 = 0.0799$

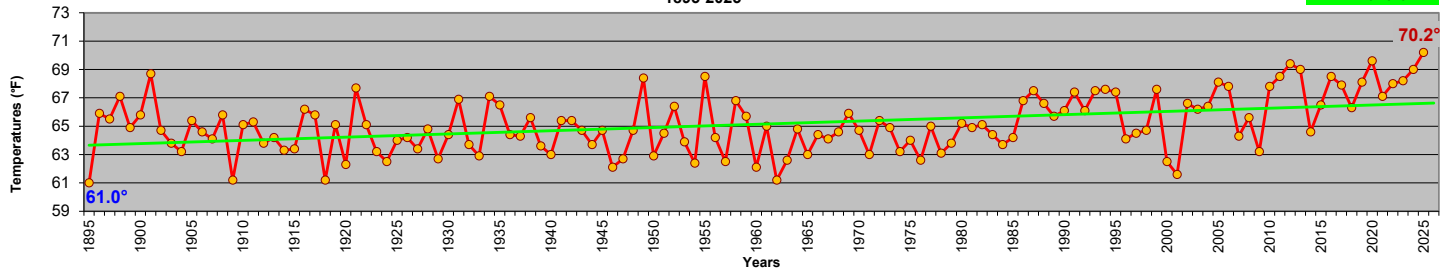


Maryland - June Average Minimum Temperatures
1895-2025

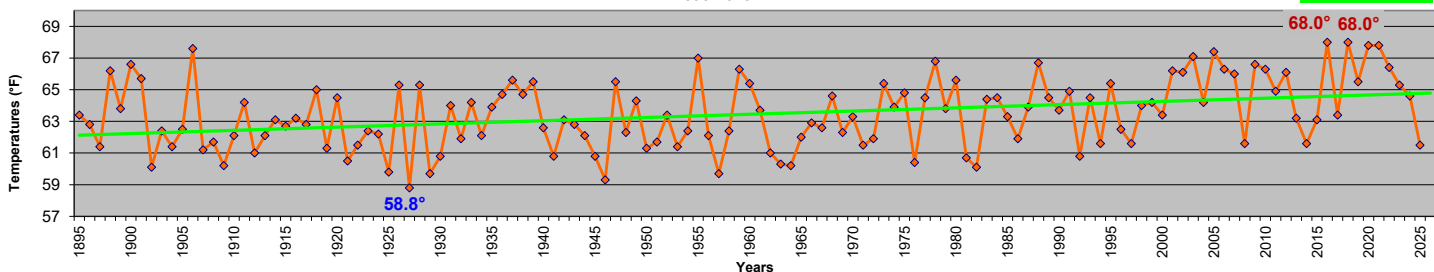
$y = 0.0209x + 58.87$
 $R^2 = 0.1419$



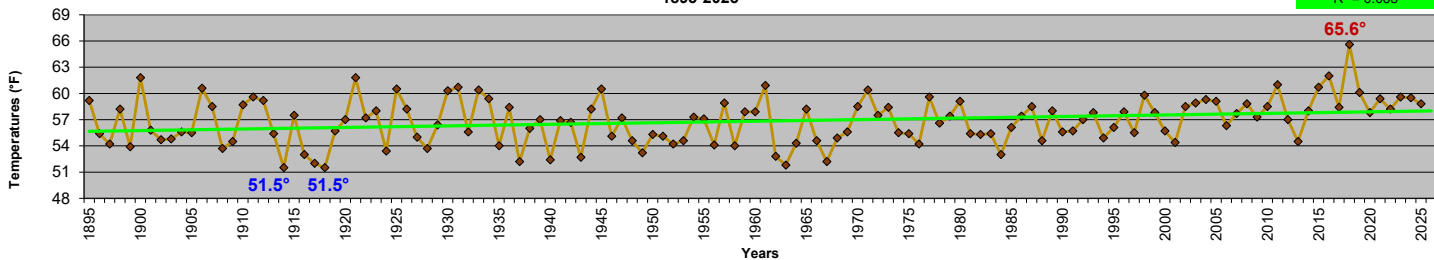
Maryland - July Average Minimum Temperatures
1895-2025



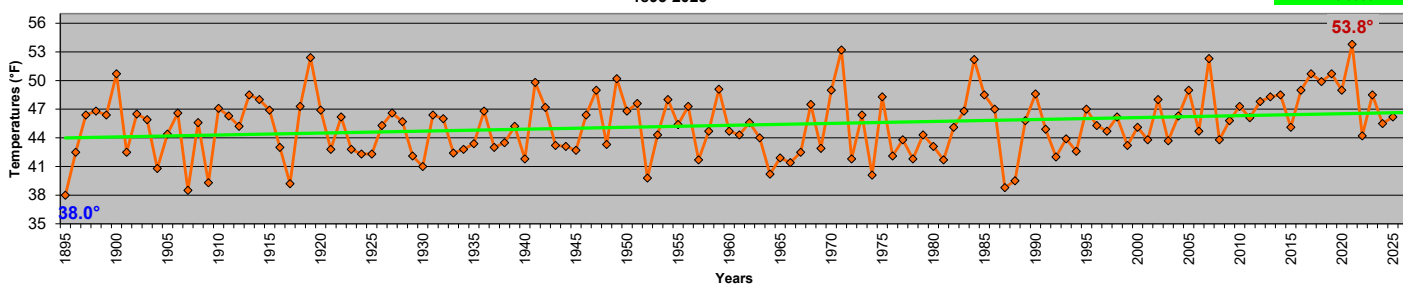
Maryland - August Average Minimum Temperatures
1895-2025



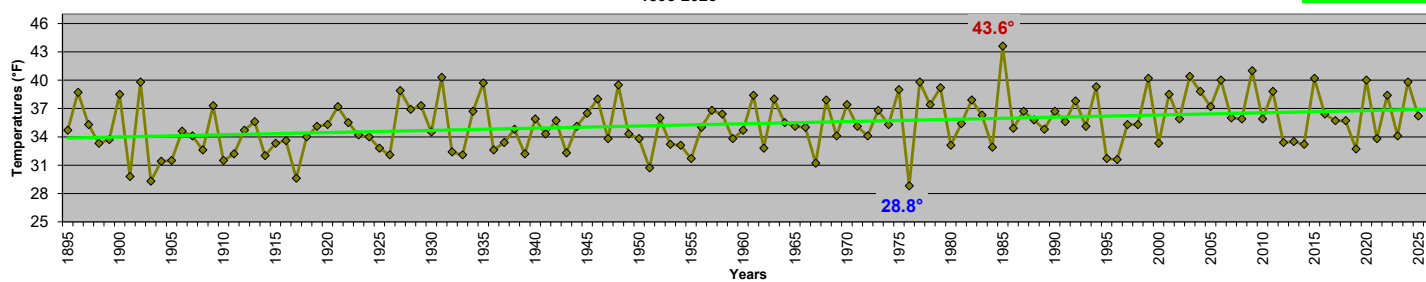
Maryland - September Average Minimum Temperatures
1895-2025



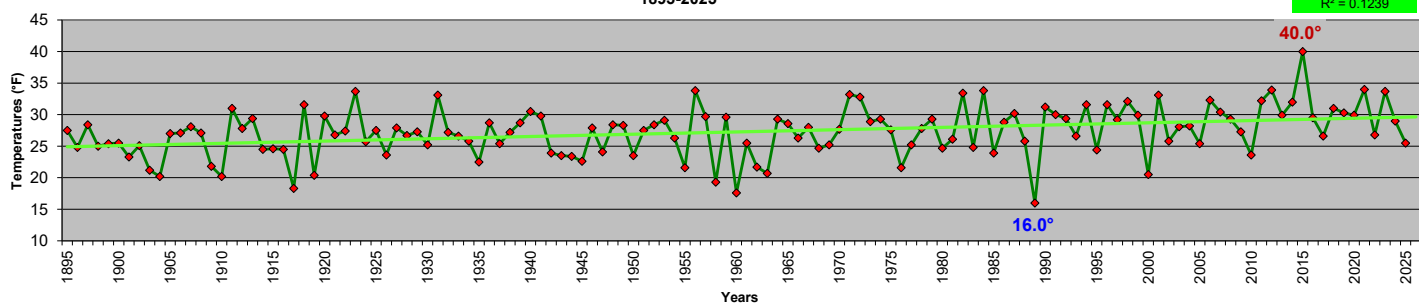
Maryland - October Average Minimum Temperatures
1895-2025



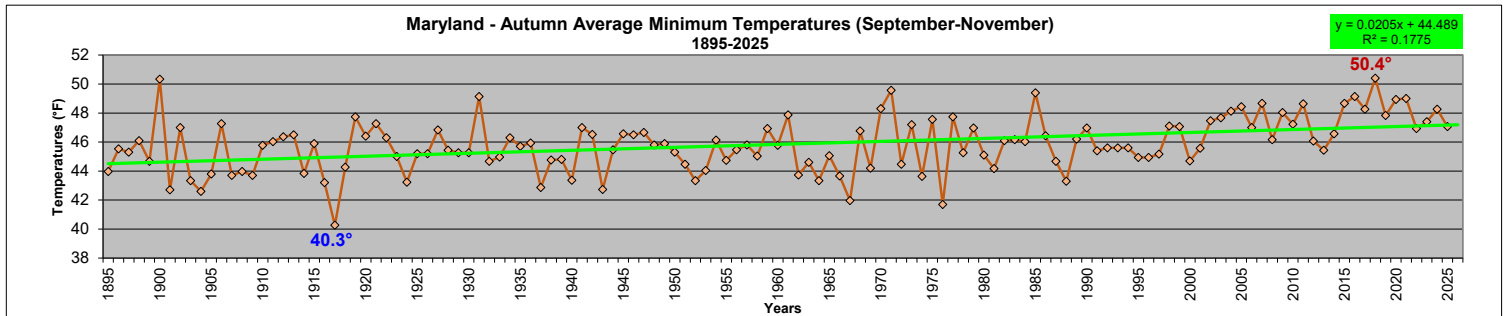
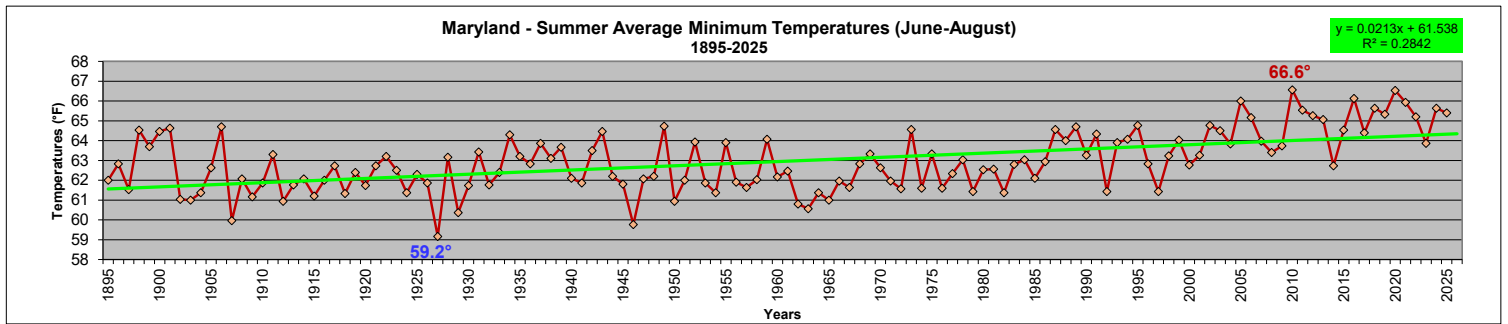
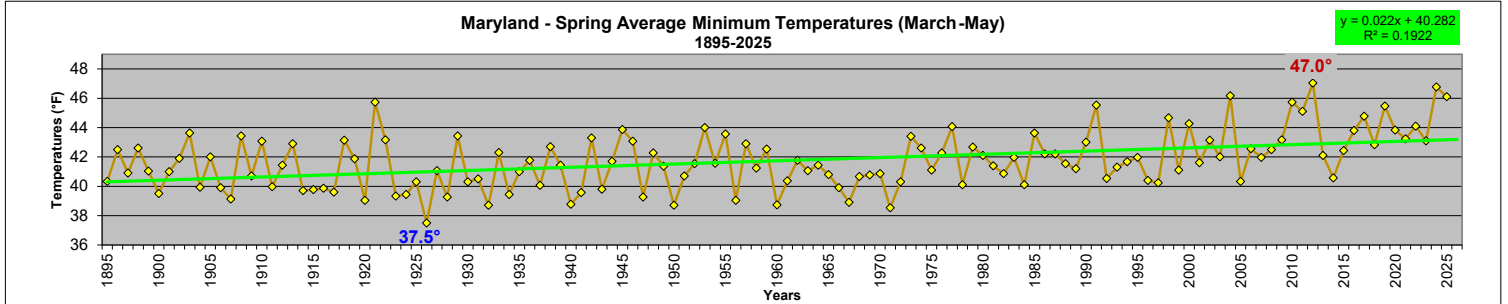
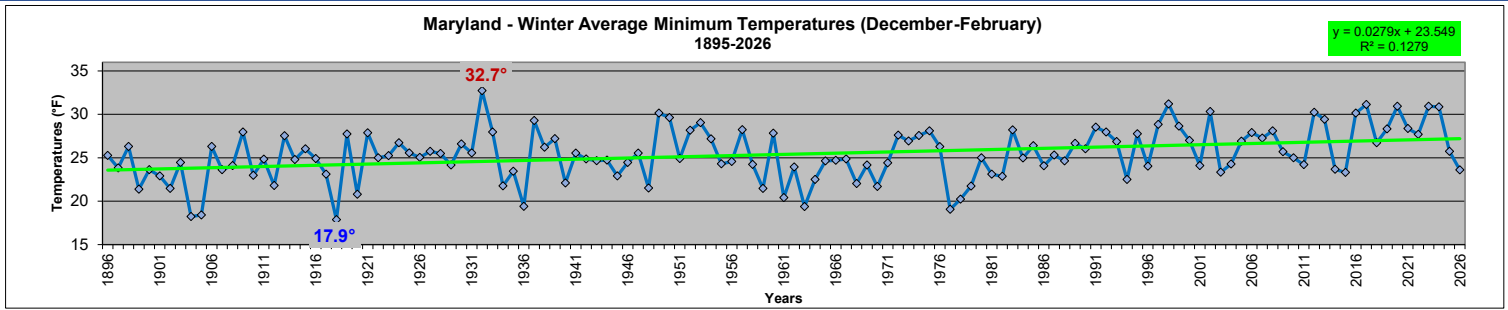
Maryland - November Average Minimum Temperatures
1895-2025



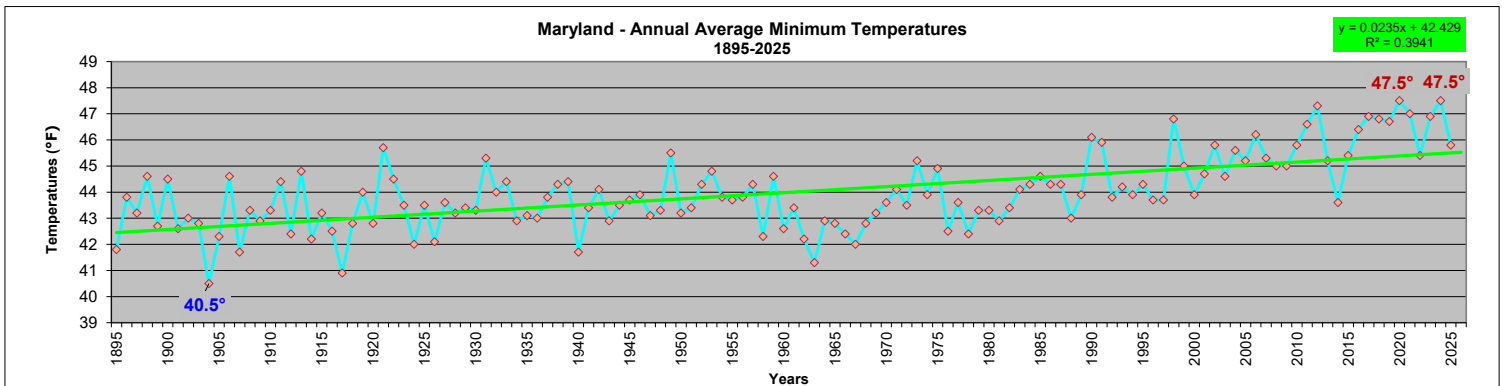
Maryland - December Average Minimum Temperatures
1895-2025



MARYLAND STATEWIDE SEASONAL AVERAGE MINIMUM TEMPERATURES



MARYLAND STATEWIDE ANNUAL AVERAGE MINIMUM TEMPERATURES



DATA SOURCE: 1) NOAA National Centers for Environmental information, Climate at a Glance: Statewide Time Series, published **May 2026**, retrieved on **May 13, 2026** from:

<https://www.ncel.noaa.gov/access/monitoring/climate-at-a-glance/statewide/time-series>

2) Northeast Regional Climate Center, sometimes used as preliminary data a few days prior to the release of official NCEI data:

<https://www.nrcr.cornell.edu/regional/tables/tables.html>

NOTES:

1) The data provided is for 30-Year Averages, not for Normals.

2) Statewide 30-Year-Average Chart Trendline, shown in **bright green**, is Linear, with associated equation and R-Squared values portrayed.

3) Extreme values are shown in **bold**, Maxima in **red**, Minima in **blue**.

4) Cells with gray backgrounds are incomplete or future data.