

BALTIMORE, MARYLAND

Monthly and Seasonal Snowfall

(Measurements in Inches)

Period of Record: 1883-Present

| Season | Jul | Aug | Sep | Oct | Nov | Dec | Jan | Feb | Mar | Apr | May | Jun | Season Total |
|-----------|-----|-----|-----|-----|-----|------|------|------|------|-----|-----|-----|--------------|
| 1883-1884 | 0.0 | 0.0 | 0.0 | 0.0 | 0.0 | 4.4 | 14.2 | 0.0 | 8.7 | 8.0 | 0.0 | 0.0 | 35.3 |
| 1884-1885 | 0.0 | 0.0 | 0.0 | 0.0 | 0.6 | 3.8 | 1.9 | 17.2 | 5.9 | 2.0 | 0.0 | 0.0 | 31.4 |
| 1885-1886 | 0.0 | 0.0 | 0.0 | 0.0 | 0.0 | 0.0 | 13.0 | 15.3 | 2.0 | 0.0 | 0.0 | 0.0 | 30.3 |
| 1886-1887 | 0.0 | 0.0 | 0.0 | 0.0 | T | 10.2 | 2.5 | 5.0 | 6.8 | 1.1 | 0.0 | 0.0 | 25.6 |
| 1887-1888 | 0.0 | 0.0 | 0.0 | 0.0 | 0.0 | 12.0 | 8.8 | 3.9 | 7.4 | 0.0 | 0.0 | 0.0 | 32.1 |
| 1888-1889 | 0.0 | 0.0 | 0.0 | 0.0 | 1.1 | T | 2.6 | 5.3 | T | T | 0.0 | 0.0 | 9.0 |
| 1889-1890 | 0.0 | 0.0 | 0.0 | T | 0.0 | 0.0 | 0.1 | 2.5 | 2.3 | T | 0.0 | 0.0 | 4.9 |
| 1890-1891 | 0.0 | 0.0 | 0.0 | T | T | 10.6 | 1.3 | 3.5 | 20.5 | 0.0 | T | 0.0 | 35.9 |
| 1891-1892 | 0.0 | 0.0 | 0.0 | 0.0 | T | T | 14.5 | 4.2 | 25.6 | T | 0.0 | 0.0 | 44.3 |
| 1892-1893 | 0.0 | 0.0 | 0.0 | 0.0 | 2.2 | 4.3 | 8.1 | 11.7 | 4.0 | 0.0 | T | 0.0 | 30.3 |
| 1893-1894 | 0.0 | 0.0 | 0.0 | 0.0 | 0.2 | 3.1 | 1.0 | 11.7 | T | 5.0 | 0.0 | 0.0 | 21.0 |
| 1894-1895 | 0.0 | 0.0 | 0.0 | 0.0 | T | 3.0 | 5.0 | 9.3 | 0.6 | 0.0 | 0.0 | 0.0 | 17.9 |
| 1895-1896 | 0.0 | 0.0 | 0.0 | T | T | 0.2 | 1.0 | 2.1 | 13.8 | T | 0.0 | 0.0 | 17.1 |
| 1896-1897 | 0.0 | 0.0 | 0.0 | 0.0 | 3.0 | 3.2 | 4.7 | 1.4 | T | 0.0 | 0.0 | 0.0 | 12.3 |
| 1897-1898 | 0.0 | 0.0 | 0.0 | 0.0 | T | 2.6 | 5.4 | T | 2.4 | 0.1 | 0.0 | 0.0 | 10.5 |
| 1898-1899 | 0.0 | 0.0 | 0.0 | 0.0 | 9.7 | 0.6 | 5.3 | 33.9 | 1.6 | T | 0.0 | 0.0 | 51.1 |
| 1899-1900 | 0.0 | 0.0 | 0.0 | 0.0 | 0.0 | 0.7 | 2.5 | 13.0 | 9.5 | T | 0.0 | 0.0 | 25.7 |
| 1900-1901 | 0.0 | 0.0 | 0.0 | 0.0 | T | T | 6.5 | 2.1 | 0.1 | 0.0 | 0.0 | 0.0 | 8.7 |
| 1901-1902 | 0.0 | 0.0 | 0.0 | 0.0 | 0.1 | 0.6 | 6.7 | 1.0 | 5.0 | 0.0 | 0.0 | 0.0 | 13.4 |
| 1902-1903 | 0.0 | 0.0 | 0.0 | 0.0 | 0.0 | 7.0 | 6.8 | 6.0 | 0.0 | 0.0 | 0.0 | 0.0 | 19.8 |
| 1903-1904 | 0.0 | 0.0 | 0.0 | T | 1.0 | 3.8 | 16.6 | 2.5 | 2.0 | 0.0 | 0.0 | 0.0 | 25.9 |
| 1904-1905 | 0.0 | 0.0 | 0.0 | 0.0 | 3.0 | 17.1 | 15.0 | 6.7 | 0.2 | T | 0.0 | 0.0 | 42.0 |
| 1905-1906 | 0.0 | 0.0 | 0.0 | 0.0 | 0.0 | 5.7 | 1.2 | 6.9 | 11.2 | 0.0 | 0.0 | 0.0 | 25.0 |
| 1906-1907 | 0.0 | 0.0 | 0.0 | 0.0 | T | 0.2 | 7.3 | 15.9 | 7.7 | T | 0.0 | 0.0 | 31.1 |
| 1907-1908 | 0.0 | 0.0 | 0.0 | 0.0 | T | 2.1 | 2.6 | 12.1 | 0.5 | T | 0.0 | 0.0 | 17.3 |
| 1908-1909 | 0.0 | 0.0 | 0.0 | 0.0 | 4.8 | 7.5 | 6.2 | 3.3 | 11.7 | T | 0.0 | 0.0 | 33.5 |
| 1909-1910 | 0.0 | 0.0 | 0.0 | 0.0 | T | 12.3 | 13.2 | 5.2 | 2.1 | 0.0 | 0.0 | 0.0 | 32.8 |
| 1910-1911 | 0.0 | 0.0 | 0.0 | 0.0 | 1.0 | 12.1 | 4.7 | 9.0 | 8.4 | T | 0.0 | 0.0 | 35.2 |
| 1911-1912 | 0.0 | 0.0 | 0.0 | 0.0 | T | T | 14.4 | T | 8.5 | 0.0 | 0.0 | 0.0 | 22.9 |
| 1912-1913 | 0.0 | 0.0 | 0.0 | 0.0 | 0.5 | 4.4 | T | 2.4 | T | T | 0.0 | 0.0 | 7.3 |
| 1913-1914 | 0.0 | 0.0 | 0.0 | 0.0 | 0.0 | T | T | 11.8 | 11.6 | 0.0 | 0.0 | 0.0 | 23.4 |
| 1914-1915 | 0.0 | 0.0 | 0.0 | 0.0 | 0.0 | 2.6 | 2.6 | 1.6 | 5.0 | 4.5 | 0.0 | 0.0 | 16.3 |
| 1915-1916 | 0.0 | 0.0 | 0.0 | 0.0 | T | 4.3 | 1.6 | 7.3 | 2.8 | 5.1 | 0.0 | 0.0 | 21.1 |
| 1916-1917 | 0.0 | 0.0 | 0.0 | 0.0 | T | 10.5 | 5.9 | 6.7 | 2.2 | 3.0 | 0.0 | 0.0 | 28.3 |
| 1917-1918 | 0.0 | 0.0 | 0.0 | T | 2.0 | 8.3 | 22.2 | 2.4 | T | 0.5 | 0.0 | 0.0 | 35.4 |
| 1918-1919 | 0.0 | 0.0 | 0.0 | 0.0 | 0.0 | T | 1.3 | 3.0 | T | T | 0.0 | 0.0 | 4.3 |
| 1919-1920 | 0.0 | 0.0 | 0.0 | 0.0 | 0.0 | 5.1 | 2.1 | 9.6 | 2.4 | T | 0.0 | 0.0 | 19.2 |
| 1920-1921 | 0.0 | 0.0 | 0.0 | 0.0 | T | 0.5 | 0.6 | 8.7 | T | T | 0.0 | 0.0 | 9.8 |
| 1921-1922 | 0.0 | 0.0 | 0.0 | 0.0 | T | 8.6 | 31.5 | 4.7 | 0.8 | 0.0 | 0.0 | 0.0 | 45.6 |
| 1922-1923 | 0.0 | 0.0 | 0.0 | 0.0 | T | 2.8 | 6.8 | 4.3 | 6.2 | 1.1 | T | 0.0 | 21.2 |
| 1923-1924 | 0.0 | 0.0 | 0.0 | 0.0 | 0.0 | 1.8 | 0.6 | 10.6 | 11.6 | 9.8 | 0.0 | 0.0 | 34.4 |
| 1924-1925 | 0.0 | 0.0 | 0.0 | 0.0 | 0.2 | 0.1 | 22.7 | T | 0.3 | 0.0 | 0.0 | 0.0 | 23.3 |
| 1925-1926 | 0.0 | 0.0 | 0.0 | 2.5 | 0.2 | 0.2 | 3.3 | 16.1 | T | 0.6 | 0.0 | 0.0 | 22.9 |
| 1926-1927 | 0.0 | 0.0 | 0.0 | 0.0 | T | 1.9 | 0.9 | 7.9 | T | 1.3 | 0.0 | 0.0 | 12.0 |
| 1927-1928 | 0.0 | 0.0 | 0.0 | 0.0 | T | 1.5 | 14.3 | 0.1 | 3.3 | 0.1 | 0.0 | 0.0 | 19.3 |
| 1928-1929 | 0.0 | 0.0 | 0.0 | 0.0 | T | 0.3 | 0.8 | 11.3 | T | T | 0.0 | 0.0 | 12.4 |
| 1929-1930 | 0.0 | 0.0 | 0.0 | T | 0.3 | 4.1 | 15.0 | 3.4 | T | T | 0.0 | 0.0 | 22.8 |
| 1930-1931 | 0.0 | 0.0 | 0.0 | T | T | 1.6 | 1.2 | 0.8 | 10.0 | T | 0.0 | 0.0 | 13.6 |
| 1931-1932 | 0.0 | 0.0 | 0.0 | 0.0 | 0.1 | 0.8 | 0.8 | T | 3.2 | 0.0 | 0.0 | 0.0 | 4.9 |
| 1932-1933 | 0.0 | 0.0 | 0.0 | 0.0 | T | 14.7 | 0.1 | 10.6 | 2.5 | T | 0.0 | 0.0 | 27.9 |
| 1933-1934 | 0.0 | 0.0 | 0.0 | 0.0 | 0.8 | 7.5 | T | 27.3 | 14.0 | T | 0.0 | 0.0 | 49.6 |
| 1934-1935 | 0.0 | 0.0 | 0.0 | T | T | 0.1 | 21.2 | 8.2 | 1.3 | 1.0 | 0.0 | 0.0 | 31.8 |
| 1935-1936 | 0.0 | 0.0 | 0.0 | 0.0 | 1.2 | 10.4 | 3.7 | 14.8 | 1.6 | T | 0.0 | 0.0 | 31.7 |
| 1936-1937 | 0.0 | 0.0 | 0.0 | 0.0 | T | 2.8 | T | 8.5 | 14.7 | T | 0.0 | 0.0 | 26.0 |
| 1937-1938 | 0.0 | 0.0 | 0.0 | 0.0 | T | 0.8 | 1.4 | 0.8 | 5.0 | T | 0.0 | 0.0 | 8.0 |
| 1938-1939 | 0.0 | 0.0 | 0.0 | 0.0 | 9.1 | 0.4 | 9.1 | 0.3 | 0.5 | T | 0.0 | 0.0 | 19.4 |
| 1939-1940 | 0.0 | 0.0 | 0.0 | 0.0 | T | 6.9 | 9.6 | 5.3 | 1.3 | 0.8 | 0.0 | 0.0 | 23.9 |
| 1940-1941 | 0.0 | 0.0 | 0.0 | 1.3 | T | 0.2 | 5.5 | 4.8 | 12.1 | 0.0 | 0.0 | 0.0 | 23.9 |
| 1941-1942 | 0.0 | 0.0 | 0.0 | 0.0 | 0.0 | 0.1 | 3.0 | 1.0 | 22.2 | T | 0.0 | 0.0 | 26.3 |
| 1942-1943 | 0.0 | 0.0 | 0.0 | 0.0 | T | 5.1 | 6.5 | 2.1 | 14.7 | T | 0.0 | 0.0 | 28.4 |
| 1943-1944 | 0.0 | 0.0 | 0.0 | 0.0 | 0.7 | T | 5.2 | 5.8 | 6.9 | 1.7 | 0.0 | 0.0 | 20.3 |
| 1944-1945 | 0.0 | 0.0 | 0.0 | 0.0 | T | 4.6 | 9.8 | 4.2 | 0.0 | 0.0 | 0.0 | 0.0 | 18.6 |
| 1945-1946 | 0.0 | 0.0 | 0.0 | 0.0 | T | 12.2 | 2.8 | 11.1 | T | 0.0 | 0.0 | 0.0 | 26.1 |
| 1946-1947 | 0.0 | 0.0 | 0.0 | 0.0 | 0.0 | 3.2 | 6.6 | 12.5 | 2.8 | 0.0 | 0.0 | 0.0 | 25.1 |
| 1947-1948 | 0.0 | 0.0 | 0.0 | 0.0 | T | 4.1 | 8.9 | 10.4 | T | 0.0 | 0.0 | 0.0 | 23.4 |
| 1948-1949 | 0.0 | 0.0 | 0.0 | 0.0 | 0.0 | 6.8 | 4.2 | 8.9 | T | 0.0 | 0.0 | 0.0 | 19.9 |
| 1949-1950 | 0.0 | 0.0 | 0.0 | 0.0 | T | T | 0.5 | T | 0.2 | T | 0.0 | 0.0 | 0.7 |
| 1950-1951 | 0.0 | 0.0 | 0.0 | 0.0 | 0.5 | 2.5 | 2.5 | 0.7 | T | 0.0 | 0.0 | 0.0 | 6.2 |
| 1951-1952 | 0.0 | 0.0 | 0.0 | 0.0 | T | 5.4 | 1.7 | T | 7.0 | T | 0.0 | 0.0 | 14.1 |
| 1952-1953 | 0.0 | 0.0 | 0.0 | T | 2.8 | 3.0 | 2.4 | T | 3.6 | T | 0.0 | 0.0 | 11.8 |
| 1953-1954 | 0.0 | 0.0 | 0.0 | 0.0 | 5.9 | T | 13.7 | 1.0 | 1.5 | 0.0 | 0.0 | 0.0 | 22.1 |
| 1954-1955 | 0.0 | 0.0 | 0.0 | T | T | 0.4 | 2.3 | 6.2 | 1.2 | 0.0 | 0.0 | 0.0 | 10.1 |
| 1955-1956 | 0.0 | 0.0 | 0.0 | 0.0 | 2.0 | 0.5 | 8.4 | 0.4 | 7.8 | 0.0 | 0.0 | 0.0 | 19.1 |
| 1956-1957 | 0.0 | 0.0 | 0.0 | 0.0 | T | 0.2 | 10.7 | 2.7 | 1.4 | 0.4 | 0.0 | 0.0 | 15.4 |
| 1957-1958 | 0.0 | 0.0 | 0.0 | 0.0 | T | 9.5 | 1.5 | 18.3 | 13.7 | 0.0 | 0.0 | 0.0 | 43.0 |
| 1958-1959 | 0.0 | 0.0 | 0.0 | 0.0 | T | 0.5 | 2.1 | T | 1.0 | 0.4 | 0.0 | 0.0 | 4.0 |

| | | | | | | | | | | | | | |
|---|------------|------------|------------|-------|-------|-------|-------|------------|-------|-------|------------------------|------------|--------------|
| 1959-1960 | 0.0 | 0.0 | 0.0 | 0.0 | 0.0 | 1.5 | 0.3 | 10.7 | 21.6 | 0.0 | 0.0 | 0.0 | 34.1 |
| 1960-1961 | 0.0 | 0.0 | 0.0 | 0.0 | 0.2 | 15.6 | 14.3 | 16.4 | T | 0.0 | 0.0 | 0.0 | 46.5 |
| 1961-1962 | 0.0 | 0.0 | 0.0 | 0.0 | 3.2 | 7.2 | 2.0 | 9.2 | 13.6 | 0.0 | 0.0 | 0.0 | 35.2 |
| 1962-1963 | 0.0 | 0.0 | 0.0 | 0.0 | 0.3 | 11.7 | 3.7 | 2.1 | 1.8 | 0.0 | T | 0.0 | 19.6 |
| 1963-1964 | 0.0 | 0.0 | 0.0 | 0.0 | T | 9.7 | 10.3 | 18.2 | 13.2 | 0.4 | 0.0 | 0.0 | 51.8 |
| 1964-1965 | 0.0 | 0.0 | 0.0 | 0.0 | T | 0.8 | 8.3 | 1.1 | 8.4 | 0.0 | 0.0 | 0.0 | 18.6 |
| 1965-1966 | 0.0 | 0.0 | 0.0 | 0.0 | 0.0 | T | 21.4 | 11.4 | 0.0 | T | 0.0 | 0.0 | 32.8 |
| 1966-1967 | 0.0 | 0.0 | 0.0 | 0.0 | T | 20.4 | 0.4 | 20.1 | 2.5 | 0.0 | 0.0 | 0.0 | 43.4 |
| 1967-1968 | 0.0 | 0.0 | 0.0 | 0.0 | 8.4 | 4.6 | 2.5 | 2.6 | 5.3 | 0.0 | 0.0 | 0.0 | 23.4 |
| 1968-1969 | 0.0 | 0.0 | 0.0 | 0.0 | 4.3 | T | 0.1 | 6.4 | 7.8 | 0.0 | 0.0 | 0.0 | 18.6 |
| 1969-1970 | 0.0 | 0.0 | 0.0 | 0.0 | T | 9.0 | 6.1 | 4.0 | 1.9 | T | 0.0 | 0.0 | 21.0 |
| 1970-1971 | 0.0 | 0.0 | 0.0 | 0.0 | 0.0 | 6.3 | 4.1 | 0.6 | 2.0 | T | 0.0 | 0.0 | 13.0 |
| 1971-1972 | 0.0 | 0.0 | 0.0 | 0.0 | 1.0 | T | 1.1 | 11.4 | 0.2 | 0.3 | 0.0 | 0.0 | 14.0 |
| 1972-1973 | 0.0 | 0.0 | 0.0 | T | T | T | T | 1.2 | T | T | 0.0 | 0.0 | 1.2 |
| 1973-1974 | 0.0 | 0.0 | 0.0 | 0.0 | 0.0 | 8.3 | 1.2 | 7.6 | T | T | 0.0 | 0.0 | 17.1 |
| 1974-1975 | 0.0 | 0.0 | 0.0 | 0.0 | T | 0.4 | 5.1 | 5.5 | 1.2 | T | 0.0 | 0.0 | 12.2 |
| 1975-1976 | 0.0 | 0.0 | 0.0 | 0.0 | 0.0 | 0.7 | 1.7 | 1.3 | 7.8 | 0.0 | 0.0 | 0.0 | 11.5 |
| 1976-1977 | 0.0 | 0.0 | 0.0 | 0.0 | 1.1 | 1.5 | 8.5 | T | T | T | 0.0 | 0.0 | 11.1 |
| 1977-1978 | 0.0 | 0.0 | 0.0 | T | 0.6 | 0.5 | 12.4 | 12.3 | 8.5 | T | 0.0 | 0.0 | 34.3 |
| 1978-1979 | 0.0 | 0.0 | 0.0 | 0.0 | 3.7 | 0.0 | 5.7 | 33.1 | T | T | 0.0 | 0.0 | 42.5 |
| 1979-1980 | 0.0 | 0.0 | 0.0 | 0.3 | T | 0.1 | 4.7 | 3.8 | 5.7 | 0.0 | 0.0 | 0.0 | 14.6 |
| 1980-1981 | 0.0 | 0.0 | 0.0 | 0.0 | T | 0.2 | 4.1 | T | 0.3 | 0.0 | 0.0 | 0.0 | 4.6 |
| 1981-1982 | 0.0 | 0.0 | 0.0 | 0.0 | T | 2.4 | 14.8 | 7.6 | 0.7 | T | 0.0 | 0.0 | 25.5 |
| 1982-1983 | 0.0 | 0.0 | 0.0 | 0.0 | 0.0 | 7.2 | 1.2 | 27.2 | T | T | 0.0 | 0.0 | 35.6 |
| 1983-1984 | 0.0 | 0.0 | 0.0 | 0.0 | T | T | 8.4 | T | 6.1 | T | 0.0 | 0.0 | 14.5 |
| 1984-1985 | 0.0 | 0.0 | 0.0 | 0.0 | T | 0.1 | 9.1 | 0.4 | T | 0.7 | 0.0 | 0.0 | 10.3 |
| 1985-1986 | 0.0 | 0.0 | 0.0 | 0.0 | 0.0 | 0.7 | 1.9 | 13.0 | T | T | 0.0 | 0.0 | 15.6 |
| 1986-1987 | 0.0 | 0.0 | 0.0 | 0.0 | 0.0 | T | 25.1 | 10.1 | T | T | 0.0 | 0.0 | 35.2 |
| 1987-1988 | 0.0 | 0.0 | 0.0 | 0.0 | 6.0 | 0.5 | 13.7 | 0.2 | T | T | 0.0 | 0.0 | 20.4 |
| 1988-1989 | 0.0 | 0.0 | 0.0 | 0.0 | 0.0 | 0.9 | 6.0 | 1.1 | 0.3 | 0.0 | 0.0 | 0.0 | 8.3 |
| 1989-1990 | 0.0 | 0.0 | 0.0 | 0.0 | 3.8 | 10.2 | 0.5 | T | 2.7 | 0.1 | 0.0 | 0.0 | 17.3 |
| 1990-1991 | 0.0 | 0.0 | 0.0 | 0.0 | 0.0 | 4.8 | 4.2 | 0.1 | 0.3 | 0.0 | 0.0 | 0.0 | 9.4 |
| 1991-1992 | 0.0 | 0.0 | 0.0 | 0.0 | T | T | 2.2 | 1.9 | T | T | 0.0 | 0.0 | 4.1 |
| 1992-1993 | 0.0 | 0.0 | 0.0 | 0.0 | T | 1.5 | 1.4 | 8.8 | 12.7 | T | 0.0 | 0.0 | 24.4 |
| 1993-1994 | 0.0 | 0.0 | 0.0 | 0.0 | T | 2.9 | 4.9 | 5.3 | 4.2 | T | 0.0 | 0.0 | 17.3 |
| 1994-1995 | 0.0 | 0.0 | 0.0 | 0.0 | 0.2 | 0.0 | 0.3 | 7.5 | 0.2 | 0.0 | 0.0 | 0.0 | 8.2 |
| 1995-1996 | 0.0 | 0.0 | 0.0 | 0.0 | 1.0 | 2.3 | 32.6 | 19.0 | 7.6 | T | 0.0 | 0.0 | 62.5 |
| 1996-1997 | 0.0 | 0.0 | 0.0 | 0.0 | 0.3 | 0.2 | 5.0 | 7.1 | 2.7 | T | 0.0 | 0.0 | 15.3 |
| 1997-1998 | 0.0 | 0.0 | 0.0 | 0.0 | 0.0 | 0.4 | 0.7 | T | 2.1 | 0.0 | 0.0 | 0.0 | 3.2 |
| 1998-1999 | 0.0 | 0.0 | 0.0 | 0.0 | 0.0 | 3.0 | 4.0 | 0.6 | 7.6 | 0.0 | 0.0 | 0.0 | 15.2 |
| 1999-2000 | 0.0 | 0.0 | 0.0 | 0.0 | 0.0 | 0.2 | 23.1 | 2.6 | 0.0 | 0.2 | 0.0 | 0.0 | 26.1 |
| 2000-2001 | 0.0 | 0.0 | 0.0 | 0.0 | T | 1.3 | 3.7 | 3.7 | T | T | 0.0 | 0.0 | 8.7 |
| 2001-2002 | 0.0 | 0.0 | 0.0 | 0.0 | 0.0 | 0.0 | 2.3 | T | T | 0.0 | 0.0 | 0.0 | 2.3 |
| 2002-2003 | 0.0 | 0.0 | 0.0 | 0.0 | 0.0 | 9.7 | 5.3 | 40.5 | 2.6 | T | 0.0 | 0.0 | 58.1 |
| 2003-2004 | 0.0 | 0.0 | 0.0 | T | 0.0 | 9.6 | 8.4 | 0.1 | 0.2 | 0.0 | 0.0 | 0.0 | 18.3 |
| 2004-2005 | 0.0 | 0.0 | 0.0 | 0.0 | 0.0 | T | 7.6 | 10.0 | 0.4 | 0.0 | 0.0 | 0.0 | 18.0 |
| 2005-2006 | 0.0 | 0.0 | 0.0 | 0.0 | 0.5 | 6.0 | T | 13.1 | T | T | 0.0 | 0.0 | 19.6 |
| 2006-2007 | 0.0 | 0.0 | 0.0 | 0.0 | 0.0 | T | 0.9 | 8.5 | 1.4 | 0.2 | 0.0 | 0.0 | 11.0 |
| 2007-2008 | 0.0 | 0.0 | 0.0 | 0.0 | T | 4.8 | 2.4 | 1.3 | 0.0 | 0.0 | 0.0 | 0.0 | 8.5 |
| 2008-2009 | 0.0 | 0.0 | 0.0 | 0.0 | T | 0.6 | 2.1 | 0.6 | 5.8 | T | 0.0 | 0.0 | 9.1 |
| 2009-2010 | 0.0 | 0.0 | 0.0 | 0.0 | 0.0 | 20.1 | 6.9 | 50.0 | T | 0.0 | 0.0 | 0.0 | 77.0 |
| 2010-2011 | 0.0 | 0.0 | 0.0 | 0.0 | 0.0 | 1.2 | 10.7 | 2.5 | T | 0.0 | 0.0 | 0.0 | 14.4 |
| 2011-2012 | 0.0 | 0.0 | 0.0 | T | 0.0 | T | 1.3 | 0.5 | T | 0.0 | 0.0 | 0.0 | 1.8 |
| 2012-2013 | 0.0 | 0.0 | 0.0 | 0.0 | T | 1.4 | 2.9 | 0.5 | 3.2 | T | 0.0 | 0.0 | 8.0 |
| 2013-2014 | 0.0 | 0.0 | 0.0 | 0.0 | T | 2.9 | 9.8 | 14.2 | 12.1 | T | 0.0 | 0.0 | 39.0 |
| 2014-2015 | 0.0 | 0.0 | 0.0 | 0.0 | 0.3 | 0.2 | 5.9 | 14.6 | 7.7 | 0.0 | 0.0 | 0.0 | 28.7 |
| 2015-2016 | 0.0 | 0.0 | 0.0 | 0.0 | 0.0 | T | 30.0 | 2.6 | 2.5 | T | 0.0 | 0.0 | 35.1 |
| 2016-2017 | 0.0 | 0.0 | 0.0 | 0.0 | 0.0 | T | 0.7 | T | 2.3 | 0.0 | 0.0 | 0.0 | 3.0 |
| 2017-2018 | 0.0 | 0.0 | 0.0 | 0.0 | 0.0 | 4.3 | 2.2 | 2.2 | 6.7 | 0.0 | 0.0 | 0.0 | 15.4 |
| 2018-2019 | 0.0 | 0.0 | 0.0 | 0.0 | 1.7 | 0.0 | 7.8 | 6.1 | 2.7 | 0.0 | 0.0 | 0.0 | 18.3 |
| 2019-2020 | 0.0 | 0.0 | 0.0 | 0.0 | T | 0.3 | 1.5 | 0.0 | 0.0 | 0.0 | 0.0 | 0.0 | 1.8 |
| 2020-2021 | 0.0 | 0.0 | 0.0 | 0.0 | 0.0 | 1.6 | 4.3 | 5.0 | 0.0 | T | 0.0 | 0.0 | 10.9 |
| 2021-2022 | 0.0 | 0.0 | 0.0 | 0.0 | T | T | 13.3 | 0.7 | 0.4 | 0.0 | 0.0 | 0.0 | 14.4 |
| 2022-2023 | 0.0 | 0.0 | 0.0 | 0.0 | 0.0 | T | T | 0.2 | T | 0.0 | 0.0 | 0.0 | 0.2 |
| 2023-2024 | 0.0 | 0.0 | 0.0 | 0.0 | T | T | 9.1 | 2.2 | T | 0.0 | 0.0 | 0.0 | 11.3 |
| 2024-2025 | 0.0 | 0.0 | 0.0 | 0.0 | T | T | 8.9 | 3.8 | 0.0 | 0.0 | 0.0 | 0.0 | 12.7 |
| 2025-2026 | 0.0 | 0.0 | 0.0 | 0.0 | T | 2.0 | 11.7 | 1.9 | 2.0 | 0.0 | | | 17.6 |
| Season | Jul | Aug | Sep | Oct | Nov | Dec | Jan | Feb | Mar | Apr | May | Jun | Season Total |
| Average 1883-1884 through 2024-2025 | 0.0 | 0.0 | 0.0 | T | 0.6 | 3.4 | 6.3 | 6.8 | 4.0 | 0.3 | T | 0.0 | 21.5 |
| Average 1990-1991 through 2019-2020 | 0.0 | 0.0 | 0.0 | T | 0.1 | 2.5 | 6.4 | 7.5 | 2.8 | T | 0.0 | 0.0 | 19.3 |
| Running Avg 2000-2001 through 2029-2030 | 0.0 | 0.0 | 0.0 | T | 0.1 | 2.5 | 6.1 | 7.1 | 1.9 | T | 0.0 | 0.0 | 17.8 |
| Maximum | 0.0 | 0.0 | 0.0 | 2.5 | 9.7 | 20.4 | 32.6 | 50.0 | 25.6 | 9.8 | T | 0.0 | 77.0 |
| Year/Season | All Months | All Months | All Months | 1925 | 1898 | 1966 | 1996 | 2010 | 1892 | 1924 | 1963, 1923, 1893, 1891 | All Months | 2009-2010 |
| Minimum | 0.0 | 0.0 | 0.0 | 0.0 | 0.0 | 0.0 | T | 0.0 | 0.0 | 0.0 | 0.0 | 0.0 | 0.2 |
| Year/Season | All Months | All Months | All Months | 2025+ | 2022+ | 2018+ | 2023+ | 2020, 1884 | 2025+ | 2025+ | 2025+ | All Months | 2022-2023 |

BALTIMORE, MARYLAND

Monthly and Calendar-Year Snowfall

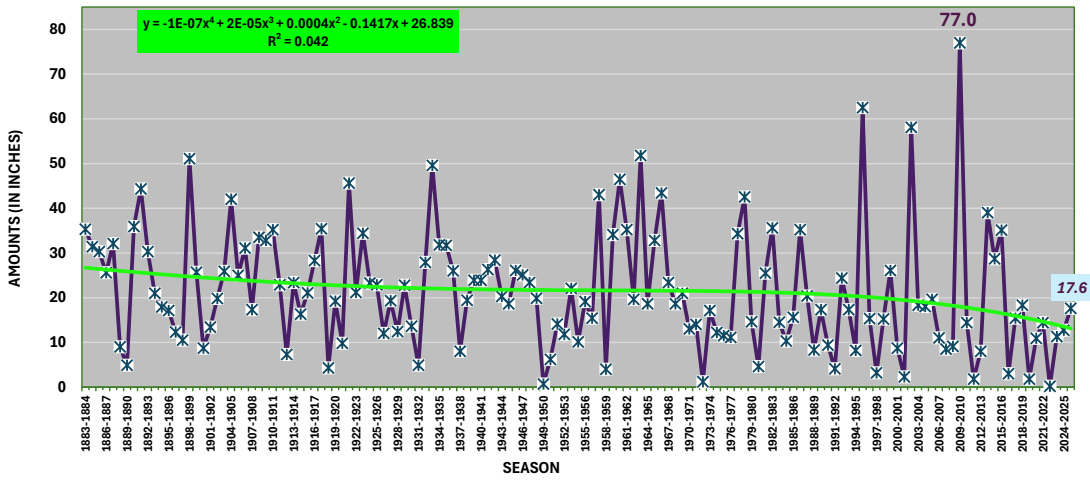
(Measurements in Inches)

Period of Record: 1883-Present

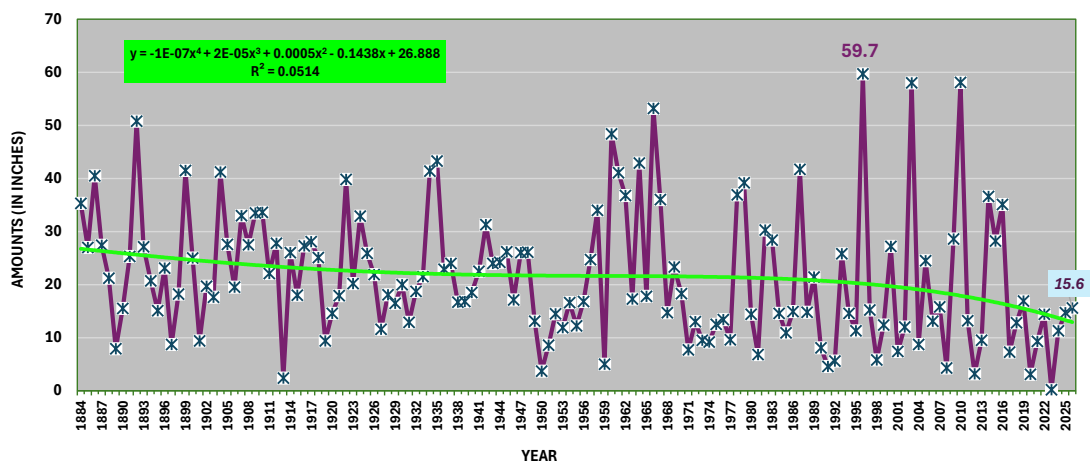
| Year | Jan | Feb | Mar | Apr | May | Jun | Jul | Aug | Sep | Oct | Nov | Dec | Year Total |
|------|------|------|------|-----|-----|-----|-----|-----|-----|-----|-----|------|------------|
| 1883 | | | | | | | 0.0 | 0.0 | 0.0 | 0.0 | 0.0 | 4.4 | |
| 1884 | 14.2 | 0.0 | 8.7 | 8.0 | 0.0 | 0.0 | 0.0 | 0.0 | 0.0 | 0.0 | 0.6 | 3.8 | 35.3 |
| 1885 | 1.9 | 17.2 | 5.9 | 2.0 | 0.0 | 0.0 | 0.0 | 0.0 | 0.0 | 0.0 | 0.0 | 0.0 | 27.0 |
| 1886 | 13.0 | 15.3 | 2.0 | 0.0 | 0.0 | 0.0 | 0.0 | 0.0 | 0.0 | 0.0 | T | 10.2 | 40.5 |
| 1887 | 2.5 | 5.0 | 6.8 | 1.1 | 0.0 | 0.0 | 0.0 | 0.0 | 0.0 | 0.0 | 0.0 | 12.0 | 27.4 |
| 1888 | 8.8 | 3.9 | 7.4 | 0.0 | 0.0 | 0.0 | 0.0 | 0.0 | 0.0 | 0.0 | 1.1 | T | 21.2 |
| 1889 | 2.6 | 5.3 | T | T | 0.0 | 0.0 | 0.0 | 0.0 | 0.0 | T | 0.0 | 0.0 | 7.9 |
| 1890 | 0.1 | 2.5 | 2.3 | T | 0.0 | 0.0 | 0.0 | 0.0 | 0.0 | T | T | 10.6 | 15.5 |
| 1891 | 1.3 | 3.5 | 20.5 | 0.0 | T | 0.0 | 0.0 | 0.0 | 0.0 | 0.0 | T | T | 25.3 |
| 1892 | 14.5 | 4.2 | 25.6 | T | 0.0 | 0.0 | 0.0 | 0.0 | 0.0 | 0.0 | 2.2 | 4.3 | 50.8 |
| 1893 | 8.1 | 11.7 | 4.0 | 0.0 | T | 0.0 | 0.0 | 0.0 | 0.0 | 0.0 | 0.2 | 3.1 | 27.1 |
| 1894 | 1.0 | 11.7 | T | 5.0 | 0.0 | 0.0 | 0.0 | 0.0 | 0.0 | 0.0 | T | 3.0 | 20.7 |
| 1895 | 5.0 | 9.3 | 0.6 | 0.0 | 0.0 | 0.0 | 0.0 | 0.0 | 0.0 | T | T | 0.2 | 15.1 |
| 1896 | 1.0 | 2.1 | 13.8 | T | 0.0 | 0.0 | 0.0 | 0.0 | 0.0 | 0.0 | 3.0 | 3.2 | 23.1 |
| 1897 | 4.7 | 1.4 | T | 0.0 | 0.0 | 0.0 | 0.0 | 0.0 | 0.0 | 0.0 | T | 2.6 | 8.7 |
| 1898 | 5.4 | T | 2.4 | 0.1 | 0.0 | 0.0 | 0.0 | 0.0 | 0.0 | 0.0 | 9.7 | 0.6 | 18.2 |
| 1899 | 5.3 | 33.9 | 1.6 | T | 0.0 | 0.0 | 0.0 | 0.0 | 0.0 | 0.0 | 0.0 | 0.7 | 41.5 |
| 1900 | 2.5 | 13.0 | 9.5 | T | 0.0 | 0.0 | 0.0 | 0.0 | 0.0 | 0.0 | T | T | 25.0 |
| 1901 | 6.5 | 2.1 | 0.1 | 0.0 | 0.0 | 0.0 | 0.0 | 0.0 | 0.0 | 0.0 | 0.1 | 0.6 | 9.4 |
| 1902 | 6.7 | 1.0 | 5.0 | 0.0 | 0.0 | 0.0 | 0.0 | 0.0 | 0.0 | 0.0 | 0.0 | 7.0 | 19.7 |
| 1903 | 6.8 | 6.0 | 0.0 | 0.0 | 0.0 | 0.0 | 0.0 | 0.0 | 0.0 | T | 1.0 | 3.8 | 17.6 |
| 1904 | 16.6 | 2.5 | 2.0 | 0.0 | 0.0 | 0.0 | 0.0 | 0.0 | 0.0 | 0.0 | 3.0 | 17.1 | 41.2 |
| 1905 | 15.0 | 6.7 | 0.2 | T | 0.0 | 0.0 | 0.0 | 0.0 | 0.0 | 0.0 | 0.0 | 5.7 | 27.6 |
| 1906 | 1.2 | 6.9 | 11.2 | 0.0 | 0.0 | 0.0 | 0.0 | 0.0 | 0.0 | 0.0 | T | 0.2 | 19.5 |
| 1907 | 7.3 | 15.9 | 7.7 | T | 0.0 | 0.0 | 0.0 | 0.0 | 0.0 | 0.0 | T | 2.1 | 33.0 |
| 1908 | 2.6 | 12.1 | 0.5 | T | 0.0 | 0.0 | 0.0 | 0.0 | 0.0 | 0.0 | 4.8 | 7.5 | 27.5 |
| 1909 | 6.2 | 3.3 | 11.7 | T | 0.0 | 0.0 | 0.0 | 0.0 | 0.0 | 0.0 | T | 12.3 | 33.5 |
| 1910 | 13.2 | 5.2 | 2.1 | 0.0 | 0.0 | 0.0 | 0.0 | 0.0 | 0.0 | 0.0 | 1.0 | 12.1 | 33.6 |
| 1911 | 4.7 | 9.0 | 8.4 | T | 0.0 | 0.0 | 0.0 | 0.0 | 0.0 | 0.0 | T | T | 22.1 |
| 1912 | 14.4 | T | 8.5 | 0.0 | 0.0 | 0.0 | 0.0 | 0.0 | 0.0 | 0.0 | 0.5 | 4.4 | 27.8 |
| 1913 | T | 2.4 | T | T | 0.0 | 0.0 | 0.0 | 0.0 | 0.0 | 0.0 | 0.0 | T | 2.4 |
| 1914 | T | 11.8 | 11.6 | 0.0 | 0.0 | 0.0 | 0.0 | 0.0 | 0.0 | 0.0 | 0.0 | 2.6 | 26.0 |
| 1915 | 2.6 | 1.6 | 5.0 | 4.5 | 0.0 | 0.0 | 0.0 | 0.0 | 0.0 | 0.0 | T | 4.3 | 18.0 |
| 1916 | 1.6 | 7.3 | 2.8 | 5.1 | 0.0 | 0.0 | 0.0 | 0.0 | 0.0 | 0.0 | T | 10.5 | 27.3 |
| 1917 | 5.9 | 6.7 | 2.2 | 3.0 | 0.0 | 0.0 | 0.0 | 0.0 | 0.0 | T | 2.0 | 8.3 | 28.1 |
| 1918 | 22.2 | 2.4 | T | 0.5 | 0.0 | 0.0 | 0.0 | 0.0 | 0.0 | 0.0 | 0.0 | T | 25.1 |
| 1919 | 1.3 | 3.0 | T | T | 0.0 | 0.0 | 0.0 | 0.0 | 0.0 | 0.0 | 0.0 | 5.1 | 9.4 |
| 1920 | 2.1 | 9.6 | 2.4 | T | 0.0 | 0.0 | 0.0 | 0.0 | 0.0 | 0.0 | T | 0.5 | 14.6 |
| 1921 | 0.6 | 8.7 | T | T | 0.0 | 0.0 | 0.0 | 0.0 | 0.0 | 0.0 | T | 8.6 | 17.9 |
| 1922 | 31.5 | 4.7 | 0.8 | 0.0 | 0.0 | 0.0 | 0.0 | 0.0 | 0.0 | 0.0 | T | 2.8 | 39.8 |
| 1923 | 6.8 | 4.3 | 6.2 | 1.1 | T | 0.0 | 0.0 | 0.0 | 0.0 | 0.0 | 0.0 | 1.8 | 20.2 |
| 1924 | 0.6 | 10.6 | 11.6 | 9.8 | 0.0 | 0.0 | 0.0 | 0.0 | 0.0 | 0.0 | 0.2 | 0.1 | 32.9 |
| 1925 | 22.7 | T | 0.3 | 0.0 | 0.0 | 0.0 | 0.0 | 0.0 | 0.0 | 2.5 | 0.2 | 0.2 | 25.9 |
| 1926 | 3.3 | 16.1 | T | 0.6 | 0.0 | 0.0 | 0.0 | 0.0 | 0.0 | 0.0 | T | 1.9 | 21.9 |
| 1927 | 0.9 | 7.9 | T | 1.3 | 0.0 | 0.0 | 0.0 | 0.0 | 0.0 | 0.0 | T | 1.5 | 11.6 |
| 1928 | 14.3 | 0.1 | 3.3 | 0.1 | 0.0 | 0.0 | 0.0 | 0.0 | 0.0 | 0.0 | T | 0.3 | 18.1 |
| 1929 | 0.8 | 11.3 | T | T | 0.0 | 0.0 | 0.0 | 0.0 | 0.0 | T | 0.3 | 4.1 | 16.5 |
| 1930 | 15.0 | 3.4 | T | T | 0.0 | 0.0 | 0.0 | 0.0 | 0.0 | T | T | 1.6 | 20.0 |
| 1931 | 1.2 | 0.8 | 10.0 | T | 0.0 | 0.0 | 0.0 | 0.0 | 0.0 | 0.0 | 0.1 | 0.8 | 12.9 |
| 1932 | 0.8 | T | 3.2 | 0.0 | 0.0 | 0.0 | 0.0 | 0.0 | 0.0 | 0.0 | T | 14.7 | 18.7 |
| 1933 | 0.1 | 10.6 | 2.5 | T | 0.0 | 0.0 | 0.0 | 0.0 | 0.0 | 0.0 | 0.8 | 7.5 | 21.5 |
| 1934 | T | 27.3 | 14.0 | T | 0.0 | 0.0 | 0.0 | 0.0 | 0.0 | T | T | 0.1 | 41.4 |
| 1935 | 21.2 | 8.2 | 1.3 | 1.0 | 0.0 | 0.0 | 0.0 | 0.0 | 0.0 | 0.0 | 1.2 | 10.4 | 43.3 |
| 1936 | 3.7 | 14.8 | 1.6 | T | 0.0 | 0.0 | 0.0 | 0.0 | 0.0 | 0.0 | T | 2.8 | 22.9 |
| 1937 | T | 8.5 | 14.7 | T | 0.0 | 0.0 | 0.0 | 0.0 | 0.0 | 0.0 | T | 0.8 | 24.0 |
| 1938 | 1.4 | 0.8 | 5.0 | T | 0.0 | 0.0 | 0.0 | 0.0 | 0.0 | 0.0 | 9.1 | 0.4 | 16.7 |
| 1939 | 9.1 | 0.3 | 0.5 | T | 0.0 | 0.0 | 0.0 | 0.0 | 0.0 | 0.0 | T | 6.9 | 16.8 |
| 1940 | 9.6 | 5.3 | 1.3 | 0.8 | 0.0 | 0.0 | 0.0 | 0.0 | 0.0 | 1.3 | T | 0.2 | 18.5 |
| 1941 | 5.5 | 4.8 | 12.1 | 0.0 | 0.0 | 0.0 | 0.0 | 0.0 | 0.0 | 0.0 | 0.0 | 0.1 | 22.5 |
| 1942 | 3.0 | 1.0 | 22.2 | T | 0.0 | 0.0 | 0.0 | 0.0 | 0.0 | 0.0 | T | 5.1 | 31.3 |
| 1943 | 6.5 | 2.1 | 14.7 | T | 0.0 | 0.0 | 0.0 | 0.0 | 0.0 | 0.0 | 0.7 | T | 24.0 |
| 1944 | 5.2 | 5.8 | 6.9 | 1.7 | 0.0 | 0.0 | 0.0 | 0.0 | 0.0 | 0.0 | T | 4.6 | 24.2 |
| 1945 | 9.8 | 4.2 | 0.0 | 0.0 | 0.0 | 0.0 | 0.0 | 0.0 | 0.0 | 0.0 | T | 12.2 | 26.2 |
| 1946 | 2.8 | 11.1 | T | 0.0 | 0.0 | 0.0 | 0.0 | 0.0 | 0.0 | 0.0 | 0.0 | 3.2 | 17.1 |
| 1947 | 6.6 | 12.5 | 2.8 | 0.0 | 0.0 | 0.0 | 0.0 | 0.0 | 0.0 | 0.0 | T | 4.1 | 26.0 |
| 1948 | 8.9 | 10.4 | T | 0.0 | 0.0 | 0.0 | 0.0 | 0.0 | 0.0 | 0.0 | 0.0 | 6.8 | 26.1 |
| 1949 | 4.2 | 8.9 | T | 0.0 | 0.0 | 0.0 | 0.0 | 0.0 | 0.0 | 0.0 | T | T | 13.1 |
| 1950 | 0.5 | T | 0.2 | T | 0.0 | 0.0 | 0.0 | 0.0 | 0.0 | 0.0 | 0.5 | 2.5 | 3.7 |
| 1951 | 2.5 | 0.7 | T | 0.0 | 0.0 | 0.0 | 0.0 | 0.0 | 0.0 | 0.0 | T | 5.4 | 8.6 |
| 1952 | 1.7 | T | 7.0 | T | 0.0 | 0.0 | 0.0 | 0.0 | 0.0 | T | 2.8 | 3.0 | 14.5 |
| 1953 | 2.4 | T | 3.6 | T | 0.0 | 0.0 | 0.0 | 0.0 | 0.0 | 0.0 | 5.9 | T | 11.9 |
| 1954 | 13.7 | 1.0 | 1.5 | 0.0 | 0.0 | 0.0 | 0.0 | 0.0 | 0.0 | T | T | 0.4 | 16.6 |
| 1955 | 2.3 | 6.2 | 1.2 | 0.0 | 0.0 | 0.0 | 0.0 | 0.0 | 0.0 | 0.0 | 2.0 | 0.5 | 12.2 |
| 1956 | 8.4 | 0.4 | 7.8 | 0.0 | 0.0 | 0.0 | 0.0 | 0.0 | 0.0 | 0.0 | T | 0.2 | 16.8 |
| 1957 | 10.7 | 2.7 | 1.4 | 0.4 | 0.0 | 0.0 | 0.0 | 0.0 | 0.0 | 0.0 | T | 9.5 | 24.7 |
| 1958 | 1.5 | 18.3 | 13.7 | 0.0 | 0.0 | 0.0 | 0.0 | 0.0 | 0.0 | 0.0 | T | 0.5 | 34.0 |

| | | | | | | | | | | | | | |
|---------------------------|-------|------------|-------|-------|------------------------|------------|------------|------------|------------|-------|-------|-------|------------|
| 1959 | 2.1 | T | 1.0 | 0.4 | 0.0 | 0.0 | 0.0 | 0.0 | 0.0 | 0.0 | 0.0 | 1.5 | 5.0 |
| 1960 | 0.3 | 10.7 | 21.6 | 0.0 | 0.0 | 0.0 | 0.0 | 0.0 | 0.0 | 0.0 | 0.2 | 15.6 | 48.4 |
| 1961 | 14.3 | 16.4 | T | 0.0 | 0.0 | 0.0 | 0.0 | 0.0 | 0.0 | 0.0 | 3.2 | 7.2 | 41.1 |
| 1962 | 2.0 | 9.2 | 13.6 | 0.0 | 0.0 | 0.0 | 0.0 | 0.0 | 0.0 | 0.0 | 0.3 | 11.7 | 36.8 |
| 1963 | 3.7 | 2.1 | 1.8 | 0.0 | T | 0.0 | 0.0 | 0.0 | 0.0 | 0.0 | T | 9.7 | 17.3 |
| 1964 | 10.3 | 18.2 | 13.2 | 0.4 | 0.0 | 0.0 | 0.0 | 0.0 | 0.0 | 0.0 | T | 0.8 | 42.9 |
| 1965 | 8.3 | 1.1 | 8.4 | 0.0 | 0.0 | 0.0 | 0.0 | 0.0 | 0.0 | 0.0 | 0.0 | T | 17.8 |
| 1966 | 21.4 | 11.4 | 0.0 | T | 0.0 | 0.0 | 0.0 | 0.0 | 0.0 | 0.0 | T | 20.4 | 53.2 |
| 1967 | 0.4 | 20.1 | 2.5 | 0.0 | 0.0 | 0.0 | 0.0 | 0.0 | 0.0 | 0.0 | 8.4 | 4.6 | 36.0 |
| 1968 | 2.5 | 2.6 | 5.3 | 0.0 | 0.0 | 0.0 | 0.0 | 0.0 | 0.0 | 0.0 | 4.3 | T | 14.7 |
| 1969 | 0.1 | 6.4 | 7.8 | 0.0 | 0.0 | 0.0 | 0.0 | 0.0 | 0.0 | 0.0 | T | 9.0 | 23.3 |
| 1970 | 6.1 | 4.0 | 1.9 | T | 0.0 | 0.0 | 0.0 | 0.0 | 0.0 | 0.0 | 0.0 | 6.3 | 18.3 |
| 1971 | 4.1 | 0.6 | 2.0 | T | 0.0 | 0.0 | 0.0 | 0.0 | 0.0 | 0.0 | 1.0 | T | 7.7 |
| 1972 | 1.1 | 11.4 | 0.2 | 0.3 | 0.0 | 0.0 | 0.0 | 0.0 | 0.0 | T | T | T | 13.0 |
| 1973 | T | 1.2 | T | T | 0.0 | 0.0 | 0.0 | 0.0 | 0.0 | 0.0 | 0.0 | 8.3 | 9.5 |
| 1974 | 1.2 | 7.6 | T | T | 0.0 | 0.0 | 0.0 | 0.0 | 0.0 | 0.0 | T | 0.4 | 9.2 |
| 1975 | 5.1 | 5.5 | 1.2 | T | 0.0 | 0.0 | 0.0 | 0.0 | 0.0 | 0.0 | 0.0 | 0.7 | 12.5 |
| 1976 | 1.7 | 1.3 | 7.8 | 0.0 | 0.0 | 0.0 | 0.0 | 0.0 | 0.0 | 0.0 | 1.1 | 1.5 | 13.4 |
| 1977 | 8.5 | T | T | T | 0.0 | 0.0 | 0.0 | 0.0 | 0.0 | T | 0.6 | 0.5 | 9.6 |
| 1978 | 12.4 | 12.3 | 8.5 | T | 0.0 | 0.0 | 0.0 | 0.0 | 0.0 | 0.0 | 3.7 | 0.0 | 36.9 |
| 1979 | 5.7 | 33.1 | T | T | 0.0 | 0.0 | 0.0 | 0.0 | 0.0 | 0.3 | T | 0.1 | 39.2 |
| 1980 | 4.7 | 3.8 | 5.7 | 0.0 | 0.0 | 0.0 | 0.0 | 0.0 | 0.0 | 0.0 | T | 0.2 | 14.4 |
| 1981 | 4.1 | T | 0.3 | 0.0 | 0.0 | 0.0 | 0.0 | 0.0 | 0.0 | 0.0 | T | 2.4 | 6.8 |
| 1982 | 14.8 | 7.6 | 0.7 | T | 0.0 | 0.0 | 0.0 | 0.0 | 0.0 | 0.0 | 0.0 | 7.2 | 30.3 |
| 1983 | 1.2 | 27.2 | T | T | 0.0 | 0.0 | 0.0 | 0.0 | 0.0 | 0.0 | T | T | 28.4 |
| 1984 | 8.4 | T | 6.1 | T | 0.0 | 0.0 | 0.0 | 0.0 | 0.0 | 0.0 | T | 0.1 | 14.6 |
| 1985 | 9.1 | 0.4 | T | 0.7 | 0.0 | 0.0 | 0.0 | 0.0 | 0.0 | 0.0 | 0.0 | 0.7 | 10.9 |
| 1986 | 1.9 | 13.0 | T | T | 0.0 | 0.0 | 0.0 | 0.0 | 0.0 | 0.0 | 0.0 | T | 14.9 |
| 1987 | 25.1 | 10.1 | T | T | 0.0 | 0.0 | 0.0 | 0.0 | 0.0 | 0.0 | 6.0 | 0.5 | 41.7 |
| 1988 | 13.7 | 0.2 | T | T | 0.0 | 0.0 | 0.0 | 0.0 | 0.0 | 0.0 | 0.0 | 0.9 | 14.8 |
| 1989 | 6.0 | 1.1 | 0.3 | 0.0 | 0.0 | 0.0 | 0.0 | 0.0 | 0.0 | 0.0 | 3.8 | 10.2 | 21.4 |
| 1990 | 0.5 | T | 2.7 | 0.1 | 0.0 | 0.0 | 0.0 | 0.0 | 0.0 | 0.0 | 0.0 | 4.8 | 8.1 |
| 1991 | 4.2 | 0.1 | 0.3 | 0.0 | 0.0 | 0.0 | 0.0 | 0.0 | 0.0 | 0.0 | T | T | 4.6 |
| 1992 | 2.2 | 1.9 | T | T | 0.0 | 0.0 | 0.0 | 0.0 | 0.0 | 0.0 | T | 1.5 | 5.6 |
| 1993 | 1.4 | 8.8 | 12.7 | T | 0.0 | 0.0 | 0.0 | 0.0 | 0.0 | 0.0 | T | 2.9 | 25.8 |
| 1994 | 4.9 | 5.3 | 4.2 | T | 0.0 | 0.0 | 0.0 | 0.0 | 0.0 | 0.0 | 0.2 | 0.0 | 14.6 |
| 1995 | 0.3 | 7.5 | 0.2 | 0.0 | 0.0 | 0.0 | 0.0 | 0.0 | 0.0 | 0.0 | 1.0 | 2.3 | 11.3 |
| 1996 | 32.6 | 19.0 | 7.6 | T | 0.0 | 0.0 | 0.0 | 0.0 | 0.0 | 0.0 | 0.3 | 0.2 | 59.7 |
| 1997 | 5.0 | 7.1 | 2.7 | T | 0.0 | 0.0 | 0.0 | 0.0 | 0.0 | 0.0 | 0.0 | 0.4 | 15.2 |
| 1998 | 0.7 | T | 2.1 | 0.0 | 0.0 | 0.0 | 0.0 | 0.0 | 0.0 | 0.0 | 0.0 | 3.0 | 5.8 |
| 1999 | 4.0 | 0.6 | 7.6 | 0.0 | 0.0 | 0.0 | 0.0 | 0.0 | 0.0 | 0.0 | 0.0 | 0.2 | 12.4 |
| 2000 | 23.1 | 2.6 | 0.0 | 0.2 | 0.0 | 0.0 | 0.0 | 0.0 | 0.0 | 0.0 | T | 1.3 | 27.2 |
| 2001 | 3.7 | 3.7 | T | T | 0.0 | 0.0 | 0.0 | 0.0 | 0.0 | 0.0 | 0.0 | 0.0 | 7.4 |
| 2002 | 2.3 | T | T | 0.0 | 0.0 | 0.0 | 0.0 | 0.0 | 0.0 | 0.0 | 0.0 | 9.7 | 12.0 |
| 2003 | 5.3 | 40.5 | 2.6 | T | 0.0 | 0.0 | 0.0 | 0.0 | 0.0 | T | 0.0 | 9.6 | 58.0 |
| 2004 | 8.4 | 0.1 | 0.2 | 0.0 | 0.0 | 0.0 | 0.0 | 0.0 | 0.0 | 0.0 | 0.0 | T | 8.7 |
| 2005 | 7.6 | 10.0 | 0.4 | 0.0 | 0.0 | 0.0 | 0.0 | 0.0 | 0.0 | 0.0 | 0.5 | 6.0 | 24.5 |
| 2006 | T | 13.1 | T | T | 0.0 | 0.0 | 0.0 | 0.0 | 0.0 | 0.0 | 0.0 | T | 13.1 |
| 2007 | 0.9 | 8.5 | 1.4 | 0.2 | 0.0 | 0.0 | 0.0 | 0.0 | 0.0 | 0.0 | T | 4.8 | 15.8 |
| 2008 | 2.4 | 1.3 | 0.0 | 0.0 | 0.0 | 0.0 | 0.0 | 0.0 | 0.0 | 0.0 | T | 0.6 | 4.3 |
| 2009 | 2.1 | 0.6 | 5.8 | T | 0.0 | 0.0 | 0.0 | 0.0 | 0.0 | 0.0 | 0.0 | 20.1 | 28.6 |
| 2010 | 6.9 | 50.0 | T | 0.0 | 0.0 | 0.0 | 0.0 | 0.0 | 0.0 | 0.0 | 0.0 | 1.2 | 58.1 |
| 2011 | 10.7 | 2.5 | T | 0.0 | 0.0 | 0.0 | 0.0 | 0.0 | 0.0 | T | 0.0 | T | 13.2 |
| 2012 | 1.3 | 0.5 | T | 0.0 | 0.0 | 0.0 | 0.0 | 0.0 | 0.0 | 0.0 | T | 1.4 | 3.2 |
| 2013 | 2.9 | 0.5 | 3.2 | T | 0.0 | 0.0 | 0.0 | 0.0 | 0.0 | 0.0 | T | 2.9 | 9.5 |
| 2014 | 9.8 | 14.2 | 12.1 | T | 0.0 | 0.0 | 0.0 | 0.0 | 0.0 | 0.0 | 0.3 | 0.2 | 36.6 |
| 2015 | 5.9 | 14.6 | 7.7 | 0.0 | 0.0 | 0.0 | 0.0 | 0.0 | 0.0 | 0.0 | 0.0 | T | 28.2 |
| 2016 | 30.0 | 2.6 | 2.5 | T | 0.0 | 0.0 | 0.0 | 0.0 | 0.0 | 0.0 | 0.0 | T | 35.1 |
| 2017 | 0.7 | T | 2.3 | 0.0 | 0.0 | 0.0 | 0.0 | 0.0 | 0.0 | 0.0 | 0.0 | 4.3 | 7.3 |
| 2018 | 2.2 | 2.2 | 6.7 | 0.0 | 0.0 | 0.0 | 0.0 | 0.0 | 0.0 | 0.0 | 1.7 | 0.0 | 12.8 |
| 2019 | 7.8 | 6.1 | 2.7 | 0.0 | 0.0 | 0.0 | 0.0 | 0.0 | 0.0 | 0.0 | T | 0.3 | 16.9 |
| 2020 | 1.5 | 0.0 | 0.0 | 0.0 | 0.0 | 0.0 | 0.0 | 0.0 | 0.0 | 0.0 | 0.0 | 1.6 | 3.1 |
| 2021 | 4.3 | 5.0 | 0.0 | T | 0.0 | 0.0 | 0.0 | 0.0 | 0.0 | 0.0 | T | T | 9.3 |
| 2022 | 13.3 | 0.7 | 0.4 | 0.0 | 0.0 | 0.0 | 0.0 | 0.0 | 0.0 | 0.0 | 0.0 | T | 14.4 |
| 2023 | T | 0.2 | T | 0.0 | 0.0 | 0.0 | 0.0 | 0.0 | 0.0 | 0.0 | T | T | 0.2 |
| 2024 | 9.1 | 2.2 | T | 0.0 | 0.0 | 0.0 | 0.0 | 0.0 | 0.0 | 0.0 | T | T | 11.3 |
| 2025 | 8.9 | 3.8 | 0.0 | 0.0 | 0.0 | 0.0 | 0.0 | 0.0 | 0.0 | 0.0 | T | 2.0 | 14.7 |
| 2026 | 11.7 | 1.9 | 2.0 | 0.0 | | | | | | | | | 15.6 |
| Year | Jan | Feb | Mar | Apr | May | Jun | Jul | Aug | Sep | Oct | Nov | Dec | Year Total |
| Average 1883-2025 | 6.3 | 6.8 | 4.0 | 0.3 | T | 0.0 | 0.0 | 0.0 | 0.0 | T | 0.6 | 3.4 | 21.5 |
| NCEI Normal 1991-2020 | 6.4 | 7.5 | 2.8 | T | 0.0 | 0.0 | 0.0 | 0.0 | 0.0 | T | 0.1 | 2.5 | 19.3 |
| Running Average 2001-2030 | 6.1 | 7.1 | 1.9 | T | 0.0 | 0.0 | 0.0 | 0.0 | 0.0 | T | 0.1 | 2.6 | 17.9 |
| Maximum | 32.6 | 50.0 | 25.6 | 9.8 | T | 0.0 | 0.0 | 0.0 | 0.0 | 2.5 | 9.7 | 20.4 | 59.7 |
| Year | 1996 | 2010 | 1892 | 1924 | 1963, 1923, 1893, 1891 | All Months | All Months | All Months | All Months | 1925 | 1898 | 1966 | 1996 |
| Minimum | T | 0.0 | 0.0 | 0.0 | 0.0 | 0.0 | 0.0 | 0.0 | 0.0 | 0.0 | 0.0 | 0.0 | 0.2 |
| Year | 2023+ | 2020, 1884 | 2025+ | 2025+ | 2025+ | All Months | All Months | All Months | All Months | 2025+ | 2022+ | 2018+ | 2023 |

Baltimore - Seasonal Snowfall (July-June)
(including Trendline and Extreme)
Period of Record: 1883-2026



Baltimore - Calendar-Year Snowfall
(including Trendline and Extreme)
Period of Record: 1884-2026



Data through 4/30/2026, Updated 5/1/2026

BALTIMORE, MARYLAND
AVERAGE SNOWFALL BY 30-YEAR PERIODS

| 30-YEAR-AVERAGE PERIOD | JAN | FEB | MAR | APR | MAY | JUN | JUL | AUG | SEP | OCT | NOV | DEC | SEASON | WINTER (Dec-Feb) | SPRING (Mar-May) | SUMMER (Jun-Aug) | AUTUMN (Sep-Nov) |
|-----------------------------------|-----------|-----------|------------|------------|------------|-------------|-------------|-------------|-------------|------------|------------|-----------|-----------|------------------|------------------|------------------|------------------|
| 1891-1920 | 6.6 | 6.9 | 5.3 | 0.6 | T | 0.0 | 0.0 | 0.0 | 0.0 | T | 0.9 | 4.4 | 24.3 | 17.9 | 5.9 | 0.0 | 0.9 |
| 1901-1930 | 7.8 | 6.1 | 3.5 | 0.9 | T | 0.0 | 0.0 | 0.0 | 0.0 | 0.1 | 0.4 | 4.2 | 22.9 | 18.1 | 4.3 | 0.0 | 0.5 |
| 1911-1940 | 6.6 | 6.6 | 3.9 | 0.9 | T | 0.0 | 0.0 | 0.0 | 0.0 | 0.1 | 0.5 | 3.4 | 22.5 | 16.6 | 4.8 | 0.0 | 0.6 |
| 1921-1950 | 6.6 | 6.8 | 4.5 | 0.5 | T | 0.0 | 0.0 | 0.0 | 0.0 | 0.1 | 0.4 | 3.5 | 22.4 | 16.9 | 5.1 | 0.0 | 0.6 |
| 1931-1960 | 4.9 | 5.9 | 5.7 | 0.1 | 0.0 | 0.0 | 0.0 | 0.0 | 0.0 | T | 0.8 | 4.0 | 21.0 | 14.8 | 5.9 | 0.0 | 0.8 |
| 1941-1970 | 5.6 | 6.4 | 5.7 | 0.1 | T | 0.0 | 0.0 | 0.0 | 0.0 | T | 0.9 | 4.8 | 23.5 | 16.8 | 5.8 | 0.0 | 0.9 |
| 1951-1980 | 5.3 | 6.9 | 4.6 | 0.1 | T | 0.0 | 0.0 | 0.0 | 0.0 | T | 1.1 | 3.9 | 22.1 | 16.2 | 4.7 | 0.0 | 1.1 |
| 1961-1990 | 6.6 | 7.6 | 3.0 | 0.1 | T | 0.0 | 0.0 | 0.0 | 0.0 | T | 1.1 | 3.6 | 22.3 | 17.8 | 3.1 | 0.0 | 1.1 |
| 1971-2000 | 6.9 | 6.3 | 2.4 | T | 0.0 | 0.0 | 0.0 | 0.0 | 0.0 | T | 0.6 | 1.7 | 18.2 | 14.9 | 2.4 | 0.0 | 0.6 |
| 1981-2010 | 6.8 | 8.0 | 1.9 | T | 0.0 | 0.0 | 0.0 | 0.0 | 0.0 | T | 0.4 | 3.0 | 20.1 | 17.8 | 1.9 | 0.0 | 0.4 |
| 1991-2020 | 6.4 | 7.5 | 2.8 | T | 0.0 | 0.0 | 0.0 | 0.0 | 0.0 | T | 0.1 | 2.5 | 19.4 | 16.3 | 2.8 | 0.0 | 0.1 |
| 2001-2030 Running Avg | 6.1 | 7.1 | 1.9 | T | 0.0 | 0.0 | 0.0 | 0.0 | 0.0 | T | 0.1 | 2.6 | 17.8 | 15.8 | 1.9 | 0.0 | 0.1 |
| MAX OF AVERAGES thru 1991-2020 | 7.8 | 8.0 | 5.7 | 0.9 | T | 0.0 | 0.0 | 0.0 | 0.0 | 0.1 | 1.1 | 4.8 | 24.3 | 18.1 | 5.9 | 0.0 | 1.1 |
| MAX. PERIOD | 1901-1930 | 1981-2010 | 1941-1970+ | 1911-1940+ | 1961-1990+ | All Periods | All Periods | All Periods | All Periods | 1921-1950+ | 1961-1990+ | 1941-1970 | 1891-1920 | 1901-1930 | 1931-1960+ | All Periods | 1961-1990+ |
| MIN OF AVERAGES thru 1991-2020 | 4.9 | 5.9 | 1.9 | 0.1 | 0.0 | 0.0 | 0.0 | 0.0 | 0.0 | 0.1 | 0.1 | 1.7 | 18.2 | 14.8 | 1.9 | 0.0 | 0.1 |
| MIN. PERIOD | 1931-1960 | 1931-1960 | 1981-2010 | 1991-2020+ | 1991-2020+ | All Periods | All Periods | All Periods | All Periods | 1991-2020+ | 1991-2020 | 1971-2000 | 1971-2000 | 1931-1960 | 1981-2010 | All Periods | 1991-2020 |

Data through 4/30/2026, Updated 5/1/2026

- DATA SOURCE:** 1) National Centers for Environmental Information (NCEI), State and Local Climatological Data publications: [Climatological Data - Maryland-Delaware-DC](#)
[Local Climatological Data - Baltimore](#)
- 2) The Maryland Weather Service, Vol. 2, p. 230. The Johns Hopkins Press, Baltimore, 1907. https://www.google.com/books/edition/Maryland_Weather_Service/-yPAAAMAAJ?hl=en
- 3) National Weather Service (Baltimore-Washington) NOW Data: <https://www.weather.gov/wrh/Climate?wfo=lwx>
- 4) Applied Climate Information System (ACIS): <https://scacis.rcc-acis.org/>
- 5) National Weather Service (Baltimore-Washington): <https://www.weather.gov/media/lwx/Climate/bwisnow.pdf>
- NOTES:** 1) This archive covers the official National Weather Service locations in downtown Baltimore from July 1884 through July 1950, then Baltimore-Washington International Thurgood Marshall Airport (formerly Friendship International) from Aug. 1950 to the present.
- 2) Data table values in **bold red** indicate monthly or seasonal maxima, **bold blue** indicates minima only for the Annual and Seasonal totals.
- 3) *Italic values with this color background indicate current, incomplete periods.*
- 4) Cells with no values indicate missing or future data and are not included in calculations. Running averages are updated after each time period is complete.
- 5) Chart Trendlines are shown in **bright green** and are Polynomial (Order 4), with associated Equation and R-squared values.
- 6) Prior to July 1948, sleet was not included in total snowfall in the Climatological Data publications (per the 1964 Local Climatological Data - Annual Summary for Baltimore, page 2). These data tables have been revised to include both snow and sleet in the totals per the additional information in the Local Climatological Data publications, where available, so current standard National Weather Service protocol is followed. This may result in differing values than previously published.
- 7) All Hail data has been researched and removed, as it has been included under official Snowfall and Sleet (Ice Pellets) data for many years.
- 8) Snowfall data for the period July 1883 through February 1892 has not been verified using daily values and should be used with caution, per National Weather Service Forecast Office - Baltimore/Washington.