

STEVENSVILLE - BAY BRIDGE FIELD (W29) - STEVENSVILLE, MARYLAND

AWOS Station Elevation: 16 feet/5 meters

Period of Record: 2006-Present

AVERAGE MAXIMUM TEMPERATURE (°F)

Year	Jan	Feb	Mar	Apr	May	Jun	Jul	Aug	Sep	Oct	Nov	Dec	Annual	Winter (Dec-Feb)	Spring (Mar-May)	Summer (Jun-Aug)	Autumn (Sep-Nov)
2006									76.3	66.4	57.9	51.9					66.9
2007	47.9	37.6	55.2	63.1	75.0	81.9	86.7	86.8	80.5	74.2	54.7	44.8	65.7	45.8	64.4	85.1	69.8
2008	44.0	46.3	53.9	64.4	70.6	81.9	84.3	82.5	77.2	65.6	51.7	46.7	64.1	45.1	62.9	82.9	64.8
2009	37.2	46.8	48.9	65.8	71.8	78.5	83.0	84.5	74.6	64.3	57.3	43.3	63.0	43.6	62.2	82.0	65.4
2010	40.0	37.9	56.6	69.7	74.4	84.7	87.9	84.6	80.6	67.4	56.4	39.1	64.9	40.4	66.9	85.7	68.1
2011	37.0	47.6	52.6	66.3	76.2	83.0	89.4	82.9	77.4	64.9	59.0	51.6	65.7	41.2	65.0	85.1	67.1
2012	47.2	49.0	61.4	64.9	76.9	82.2	88.9	84.9	77.1	65.9	51.0	49.9	66.6	49.3	67.7	85.3	64.7
2013	44.5	41.8			72.6	81.0	85.7	81.1	76.0	66.7	52.5	46.9	64.9	45.4		82.6	65.0
2014	38.3	40.5	47.0	61.7	73.5	80.7	83.3	80.8	76.6	66.8	52.0	45.9	62.3	41.9	60.7	81.6	65.1
2015	38.7	34.4	47.7				83.9	83.3	79.8	64.5	59.7	56.4		39.7			68.0
2016	42.0	44.7	58.7	63.4	70.3	81.7	87.9	86.5	80.4	67.7	58.8	46.7	65.7	47.7	64.1	85.3	69.0
2017	45.2	53.7	53.1	69.8	72.4	84.3	88.0	82.5	77.3	71.1	56.1	44.1	66.5	48.5	65.1	84.9	68.2
2018	40.7	50.3	47.9	61.9	78.5	81.7	86.8	87.0	81.5	67.9	51.6	47.7	65.3	45.0	62.8	85.2	67.0
2019	42.1	44.7	48.5	70.3	76.7	84.2	89.9	86.4	82.0	69.7	52.4	46.8	66.1	44.8	65.2	86.8	68.1
2020	46.8	49.0	58.0	61.0		83.9	91.0		76.8	68.0	61.5	47.2		47.5			68.8
2021	42.5	40.9	56.0											43.5			
2022		49.8	57.5	63.4	73.8						59.0	46.3			64.9		
2023	50.7	52.6	55.8	71.1	72.9	81.6	89.9	85.9	79.6	70.6	56.1	50.6	68.1	49.9	66.6	85.8	68.8
2024	45.3	49.3	58.2	67.2	75.8	88.0	90.5	86.4	78.7	70.9	60.4	46.5	68.1	48.4	67.1	88.3	70.0
2025	38.0	45.2	60.4	67.5	75.3	86.1	90.8	82.5	78.9	67.7				44.6	67.7	86.5	
2026		41.1															
Average	42.7	45.2	54.3	65.7	74.2	82.8	87.5	84.3	78.4	67.8	56.0	47.4	65.5	45.1	64.9	84.9	67.3
Maximum	50.7	53.7	61.4	71.1	78.5	88.0	91.0	87.0	82.0	74.2	61.5	56.4	68.1	49.9	67.7	88.3	70.0
Minimum	37.0	34.4	47.0	61.0	70.3	78.5	83.0	80.8	74.6	64.3	51.0	39.1	62.3	39.7	60.7	81.6	64.7

AVERAGE MINIMUM TEMPERATURE (°F)

Year	Jan	Feb	Mar	Apr	May	Jun	Jul	Aug	Sep	Oct	Nov	Dec	Annual	Winter (Dec-Feb)	Spring (Mar-May)	Summer (Jun-Aug)	Autumn (Sep-Nov)
2006									63.1	50.8	45.3	37.3					53.1
2007	36.4	27.0	37.4	46.3	57.4	66.7	70.0	70.9	64.3	58.3	41.3	34.3	50.9	33.6	47.0	69.2	54.6
2008	32.1	31.1	37.9	48.1	54.5	65.8	70.3	66.2	62.3	49.3	40.6	33.4	49.3	32.5	46.8	67.4	50.7
2009	26.4	31.1	34.7	47.5	57.1	64.6	67.5	70.4	60.7	50.1	44.6	33.1	49.0	30.3	46.4	67.5	51.8
2010	28.1	29.1	40.8	51.5	57.7	69.3	71.4	70.3	63.4	52.1	41.8	28.7	50.3	30.1	50.0	70.3	52.4
2011	27.7	30.6	37.2	48.7	59.4	66.9	72.1	68.5	63.7	48.8	43.6	36.5	50.3	29.0	48.4	69.2	52.0
2012	31.6	35.5	44.6	46.8	59.8	64.9	72.6	71.1	63.8	53.8	39.1	38.1	51.8	34.5	50.4	69.5	52.3
2013	32.5	31.3			57.0	66.9	73.8	68.6	61.0	54.3	39.1	34.5	51.9	34.0		69.7	51.5
2014	23.6	28.3	32.0	45.3	57.7	66.9	70.2	67.5	64.0	54.4	38.7	36.2	48.7	28.8	45.0	68.2	52.3
2015	27.7	20.8	32.5				71.6	70.4	66.3	51.1	46.0	44.5		28.2			54.5
2016	28.8	32.3	42.2	45.9	56.6	67.2	73.3	72.6	67.1	54.1	43.0	34.2	51.4	35.2	48.2	71.0	54.8
2017	34.6	36.6	36.8	52.9	56.3	67.7	73.2	68.9	65.1	57.7	41.4	31.5	51.9	35.1	48.7	69.9	54.8
2018	24.9	35.8	35.0	44.2	62.0	66.6	71.9	72.8	70.9	55.6	39.8	35.6	51.3	30.8	47.1	70.4	55.4
2019	28.3	31.5	35.3	52.7	61.0	67.9	74.3	71.0	65.9	55.0	38.7	33.2	51.2	31.8	49.7	71.1	53.2
2020	34.1	35.2	43.0	45.9		68.1	74.8		63.0	54.3	45.4	34.5		34.2			54.2
2021	31.1	30.4	39.8											32.0			
2022		30.9	38.7	46.1	58.2						43.5	31.4			47.7		
2023	37.1	35.4	38.5	50.3	53.2	63.2	72.3	70.1	64.3	53.7	40.8	38.9	51.5	34.6	47.3	68.5	52.9
2024	32.4	34.5	41.6	50.2	60.2	69.3	74.6	69.8	64.0	52.9	45.3	32.4	52.3	35.3	50.7	71.2	54.1
2025	25.1	30.6	41.5	50.0	59.3	68.6	74.3	66.1	63.4	52.2				31.5	50.3	69.7	
2026		27.0															
Average	30.1	31.2	38.3	48.3	58.0	66.9	72.2	69.7	64.2	53.2	42.1	34.9	50.8	32.3	48.2	69.5	53.2
Maximum	37.1	36.6	44.6	52.9	62.0	69.3	74.8	72.8	70.9	58.3	46.0	44.5	52.3	35.3	50.7	71.2	55.4
Minimum	23.6	20.8	32.0	44.2	53.2	63.2	67.5	66.1	60.7	48.8	38.7	28.7	48.7	28.2	45.0	67.4	50.7

AVERAGE MEAN TEMPERATURE (°F)

Year	Jan	Feb	Mar	Apr	May	Jun	Jul	Aug	Sep	Oct	Nov	Dec	Annual	Winter (Dec-Feb)	Spring (Mar-May)	Summer (Jun-Aug)	Autumn (Sep-Nov)
2006									69.7	58.6	51.6	44.6					60.0
2007	42.1	32.3	46.3	54.7	66.2	74.3	78.3	78.8	72.4	66.2	48.0	39.6	58.3	39.7	55.7	77.1	62.2
2008	38.1	38.7	45.9	56.3	62.5	73.9	77.3	74.3	69.8	57.4	46.2	40.0	56.7	38.8	54.9	75.2	57.8
2009	31.8	38.9	41.8	56.6	64.5	71.6	75.3	77.4	67.7	57.2	50.9	38.2	56.0	36.9	54.3	74.8	58.6
2010	34.0	33.5	48.7	60.6	66.0	77.0	79.6	77.5	72.0	59.8	49.1	33.9	57.6	35.2	58.4	78.0	60.3
2011	32.4	39.1	44.9	57.5	67.8	74.9	80.8	75.7	70.6	56.9	51.3	44.1	58.0	35.1	56.7	77.1	59.6
2012	39.4	42.2	53.0	55.8	68.4	73.6	80.8	78.0	70.5	59.9	45.1	44.0	59.2	41.9	59.1	77.4	58.5
2013	38.5	36.6			64.8	73.9	79.7	74.8	68.5	60.5	45.8	40.7	58.4	39.7		76.2	58.2
2014	30.9	34.4	39.5	53.5	65.6	73.8	76.8	74.1	70.3	60.6	45.3	41.1	55.5	35.3	52.9	74.9	58.7
2015	33.2	27.6	40.1				77.8	76.8	73.0	57.8	52.9	50.5		34.0			61.2
2016	35.4	38.5	50.4	54.6	63.4	74.4	80.6	79.5	73.7	60.9	50.9	40.4	58.6	41.5	56.2	78.2	61.9
2017	39.9	45.2	44.9	61.3	64.4	76.0	80.6	75.7	71.2	64.4	48.8	37.8	59.2	41.8	56.9	77.4	61.5
2018	32.8	43.0	41.4	53.1	70.2	74.2	79.4	79.9	76.2	61.7	45.7	41.6	58.3	37.9	54.9	77.8	61.2
2019	35.2	38.1	41.9	61.5	68.8	76.1	82.1	78.7	74.0	62.4	45.5	40.0	58.7	38.3	57.4	79.0	60.6
2020	40.4	42.1	50.4	53.4		76.0	82.9		69.9	61.2	53.4	40.9		40.8			61.5
2021	36.8	35.7	47.9											37.8			
2022		40.3	48.1	54.8	66.0						51.2	38.9			56.3		
2023	43.9	44.0	47.2	60.7	63.1	72.4	81.1	78.0	71.9	62.1	48.5	44.8	59.8	42.3	57.0	77.2	60.8
2024	38.8	41.9	49.9	58.7	68.0	78.6	82.5	78.1	71.4	61.9	52.9	39.5	60.2	41.8	58.9	79.7	62.1
2025	31.6	37.9	51.0	58.8	67.3	77.4	82.6	74.3	71.1	59.9				38.1	59.0	78.1	
2026		34.1															
Average	36.4	38.2	46.3	57.0	66.1	74.9	79.9	77.0	71.3	60.5	49.1	41.2	58.2	38.7	56.6	77.2	60.3
Maximum	43.9	45.2	53.0	61.5	70.2	78.6	82.9	79.9	76.2	66.2	53.4	50.5	60.2	42.3	59.1	79.7	62.2
Minimum	30.9	27.6	39.5	53.1	62.5	71.6	75.3	74.1	67.7	56.9	45.1	33.9	55.5	34.0	52.9	74.8	57.8

Updated 4/3/2026

STEVENSVILLE - BAY BRIDGE FIELD (W29)

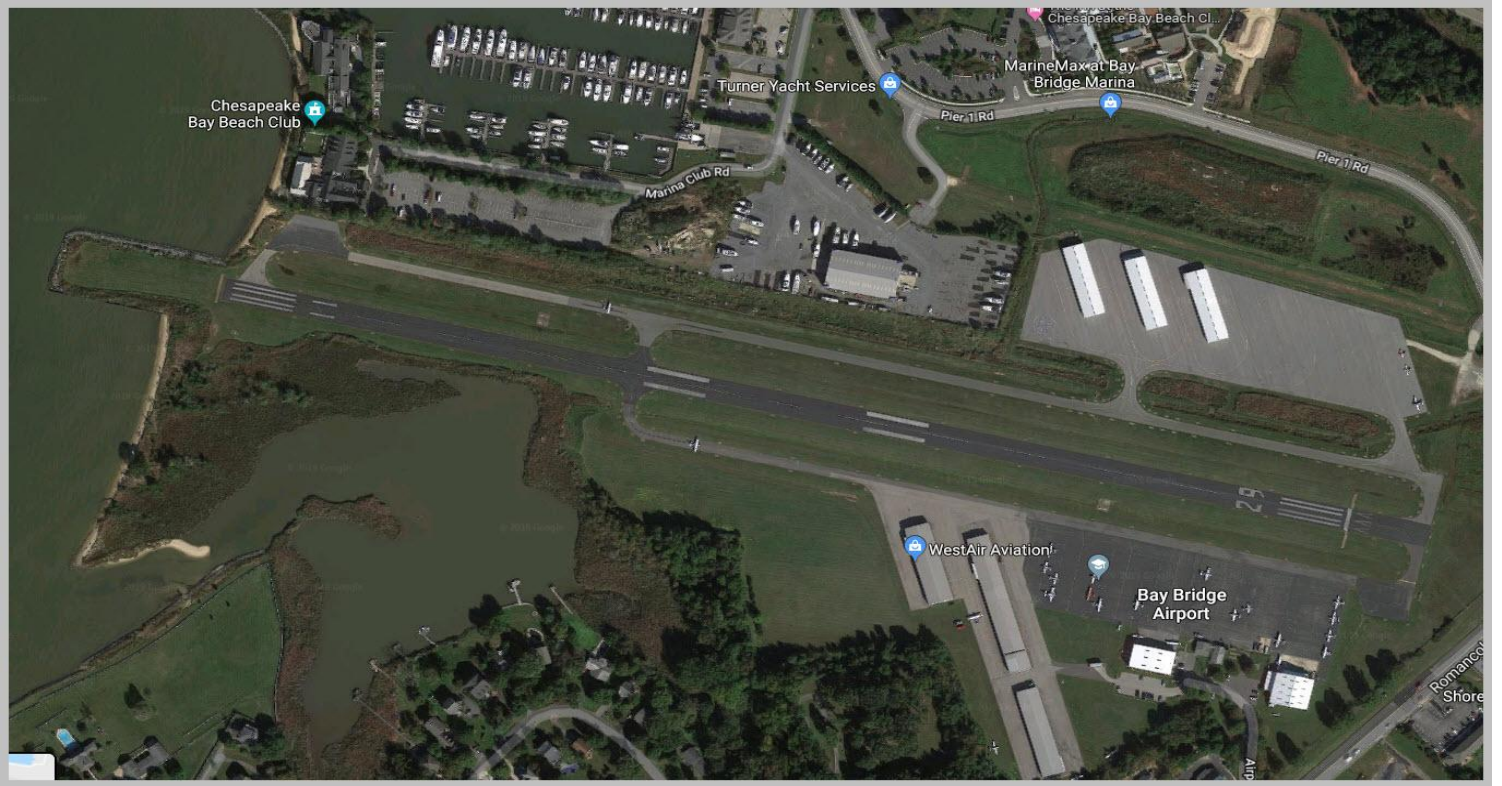


Image from Google Earth