

ST. INIGOES - WEBSTER NAVAL OUTLYING FIELD (NUI) - ST. INIGOES, MARYLAND

AWOS Station Elevation: 22 feet/7 meters

Period of Record: 2006-Present

AVERAGE MAXIMUM TEMPERATURE (°F)

Year	Jan	Feb	Mar	Apr	May	Jun	Jul	Aug	Sep	Oct	Nov	Dec	Annual	Winter (Dec-Feb)	Spring (Mar-May)	Summer (Jun-Aug)	Autumn (Sep-Nov)
2006								87.8	75.1	66.6	58.0	53.5					66.6
2007	49.2	39.4	57.7	62.6	75.0	82.8	86.5	87.2	82.0	75.5	57.1	48.8	67.0	47.4	65.1	85.5	71.5
2008	43.1	46.8	57.5	66.2	72.8	84.7	85.6	82.4	79.0	67.5	54.2	51.7	66.0	46.2	65.5	84.2	66.9
2009	40.3	50.0	55.9	70.1	79.1	85.3	86.3	86.1	76.7	67.2	59.4	45.9	66.9	47.3	68.4	85.9	67.8
2010	42.5	46.3	60.4	70.9	77.5	87.2	90.1	86.4	82.4	69.3	58.5	39.9	67.6	44.9	69.6	87.9	70.1
2011	39.0	51.5	54.5	68.5	75.9	83.9	87.6	84.8	78.2	67.3	61.8	55.9	67.4	43.5	66.3	85.4	69.1
2012	55.1	55.4	67.8	70.0	81.2	86.9	90.2	85.1						55.5	73.0	87.4	
2013		45.2	50.0	67.0	74.9	81.8	85.7	81.3	77.5	69.6	55.8	50.4			64.0	82.9	67.6
2014	41.5	44.5	51.2	64.8	75.8	82.7	84.6	81.7	78.8	70.6	55.0	49.6	65.1	45.5	63.9	83.0	68.1
2015	42.3	37.4	50.3	66.7	78.6	82.7	85.2	84.7	81.5	67.6	63.2	61.5	66.8	43.1	65.2	84.2	70.8
2016	45.0	48.2	61.8	65.9	70.9	83.1	89.3	88.3	80.8	71.9	61.0	49.8	68.0	51.6	66.2	86.9	71.2
2017	48.0	56.8	55.4	72.1	72.9	84.6	87.8	82.9	79.1	73.4	58.8	46.3	68.2	51.5	66.8	85.1	70.4
2018	43.4	54.2	50.1	63.5	80.2	83.5	85.9	86.9	82.8	69.6	55.2	51.1	67.2	48.0	64.6	85.4	69.2
2019	45.5	51.3	53.2	68.4	81.1	87.2	92.9	90.1	87.4	75.5	57.7	53.5	70.3	49.3	67.6	90.1	73.5
2020	53.5	54.9	63.2	67.9	74.3	86.3	92.8	88.2	80.3	73.7	67.5	52.4	71.3	54.0	68.5	89.1	73.8
2021	48.0	46.3	62.8	70.6	78.5	87.3	90.0	89.6	84.4	77.7	60.3	59.3	71.2	48.9	70.6	89.0	74.1
2022	46.9	55.1	62.1	67.6	76.7	86.3	89.8	88.4	82.0	69.3	64.5	50.0	69.9	53.8	68.8	88.2	71.9
2023	53.4	55.2	57.5	70.7	72.3	80.4	87.4	84.5	80.2	72.5	58.4	53.2	68.8	52.9	66.8	84.1	70.4
2024	48.0	50.8	58.8	67.9	75.1	86.8	87.1	84.3	78.4	72.4	62.6	49.4	68.5	50.7	67.3	86.1	71.1
2025	39.9	47.2	62.1	69.3	74.8	85.8	87.9		80.5	78.6	68.6	58.1	45.3	66.5	46.8	68.7	84.7
2026	44.5	45.1	60.2														
Average	45.7	49.1	57.6	67.9	76.2	84.7	88.0	85.6	80.3	70.8	59.3	50.9	68.0	48.9	67.2	86.1	70.1
Maximum	55.1	56.8	67.8	72.1	81.2	87.3	92.9	90.1	87.4	77.7	67.5	61.5	71.3	55.5	73.0	90.1	74.1
Minimum	39.0	37.4	50.0	62.6	70.9	80.4	84.6	80.5	75.1	66.6	54.2	39.9	65.1	43.1	63.9	82.9	66.6

AVERAGE MINIMUM TEMPERATURE (°F)

Year	Jan	Feb	Mar	Apr	May	Jun	Jul	Aug	Sep	Oct	Nov	Dec	Annual	Winter (Dec-Feb)	Spring (Mar-May)	Summer (Jun-Aug)	Autumn (Sep-Nov)
2006								68.8	58.9	47.1	41.6	34.1					49.2
2007	33.4	23.9	36.2	42.6	55.5	64.7	66.1	68.7	60.7	57.0	39.9	33.0	48.5	30.5	44.8	66.5	52.5
2008	28.2	28.4	37.2	47.4	52.2	65.3	68.9	65.1	62.5	48.0	39.3	33.7	48.0	29.9	45.6	66.4	49.9
2009	25.2	29.1	36.2	48.5	60.5	67.7	68.7	70.3	60.9	50.5	44.6	31.9	49.5	29.3	48.4	68.9	52.0
2010	27.8	28.5	41.3	49.8	58.6	68.5	70.9	70.5	62.9	51.4	40.4	22.0	49.4	29.4	49.9	70.0	51.6
2011	21.8	30.8	37.3	49.3	58.5	65.8	70.7	66.2	63.8	49.1	42.9	35.8	49.3	24.9	48.4	67.6	51.9
2012	34.3	35.7	47.8	47.9	61.8	65.9	73.1	70.2						35.3	52.5	69.7	
2013		30.5	33.6	46.8	57.2	66.5	72.0	65.6	57.6	52.0	38.6	33.9			45.9	68.0	49.4
2014	22.4	29.0	31.9	44.8	57.3	65.5	68.2	64.4	61.7	52.3	37.6	35.5	47.6	28.4	44.7	66.0	50.5
2015	27.8	19.9	31.7	45.7	60.7	67.5	71.3	66.1	64.3	48.7	43.5	45.4	49.4	27.7	46.0	68.3	52.2
2016	28.5	31.9	42.2	44.5	55.8	66.0	73.5	71.9	66.4	53.1	40.3	32.2	50.5	35.3	47.5	70.5	53.3
2017	34.6	35.8	37.4	53.3	56.6	66.3	72.1	67.3	61.3	54.5	40.6	30.2	50.8	34.2	49.1	68.6	52.1
2018	25.6	37.0	33.8	43.1	62.6	66.9	69.6	72.0	70.2	53.3	39.8	34.0	50.7	30.9	46.5	69.5	54.4
2019	31.7	35.1	35.3	49.9	62.9	69.8	75.4	72.7	67.4	58.7	40.6	35.9	53.0	33.6	49.4	72.6	55.6
2020	36.5	37.8	44.8	47.3	56.7	69.3	75.8	74.5	64.4	56.6	47.1	37.5	54.0	36.7	49.6	73.2	56.0
2021	33.9	34.5	42.4	49.2	56.5	70.3	74.2	74.5	65.8	60.4	41.1	41.0	53.7	35.3	49.4	73.0	55.8
2022	30.1	34.9	42.3	47.7	60.8	68.0	74.2	71.2	63.0	49.5	45.0	31.4	51.5	35.3	50.3	71.1	52.5
2023	36.4	36.1	37.8	49.5	54.0	62.2	71.6	68.2	62.5	51.5	38.4	36.5	50.4	34.6	47.1	67.3	50.8
2024	33.0	33.9	41.1	50.2	59.8	67.6	73.0	67.1	62.9	48.6	44.3	32.5	51.2	34.5	50.4	69.2	51.9
2025	24.6	31.9	41.9	49.9	59.5	70.2	73.0	64.3	61.4	49.9	39.4	28.8	49.6	31.0	50.4	69.2	50.2
2026	28.3	29.6	40.0														
Average	29.7	31.7	38.6	47.8	58.3	67.1	71.7	69.0	63.1	52.2	41.3	34.0	50.4	32.0	48.2	69.2	52.2
Maximum	36.5	37.8	47.8	53.3	62.9	70.3	75.8	74.5	70.2	60.4	47.1	45.4	54.0	36.7	52.5	73.2	56.0
Minimum	21.8	19.9	31.7	42.6	52.2	62.2	66.1	64.3	57.6	47.1	37.6	22.0	47.6	24.9	44.7	66.0	49.2

AVERAGE MEAN TEMPERATURE (°F)

Year	Jan	Feb	Mar	Apr	May	Jun	Jul	Aug	Sep	Oct	Nov	Dec	Annual	Winter (Dec-Feb)	Spring (Mar-May)	Summer (Jun-Aug)	Autumn (Sep-Nov)
2006								78.3	67.0	56.8	49.8	43.8					57.9
2007	41.3	31.6	46.9	52.6	65.3	73.8	76.3	78.0	71.4	66.2	48.5	40.9	57.7	38.9	54.9	76.0	62.0
2008	35.7	37.6	47.3	56.8	62.5	75.0	77.3	73.8	70.7	57.7	46.8	42.7	57.0	38.1	55.5	75.4	58.4
2009	32.8	39.5	46.1	59.3	69.7	76.5	77.5	78.2	68.8	58.8	52.0	38.9	58.2	38.3	58.4	77.4	59.9
2010	35.1	37.4	50.9	60.4	68.0	77.9	80.5	78.5	72.6	60.3	49.5	30.8	58.5	37.1	59.8	79.0	60.8
2011	30.5	41.0	45.9	58.9	67.2	74.9	79.2	75.5	71.0	58.2	52.3	45.8	58.4	34.1	57.3	76.5	60.5
2012	44.7	45.6	57.8	59.0	71.5	76.4	81.7	77.7						45.4	62.8	78.6	
2013		37.8	41.8	56.9	66.0	74.1	78.9	73.5	67.6	60.8	47.2	42.1			54.9	75.5	58.5
2014	31.9	36.7	41.5	54.8	66.5	74.1	76.4	73.0	70.3	61.5	46.3	42.5	56.3	36.9	54.3	74.5	59.4
2015	35.1	28.6	41.0	56.2	69.7	75.1	78.2	75.4	72.9	58.1	53.3	53.4	58.1	35.4	55.6	76.2	61.4
2016	36.8	40.1	52.0	55.2	63.3	74.6	81.4	80.1	73.6	62.5	50.7	41.0	59.3	43.4	56.8	78.7	62.3
2017	41.3	46.3	46.4	62.7	64.7	75.5	80.0	75.1	70.2	63.9	49.7	38.2	59.5	42.9	57.9	76.9	61.3
2018	34.5	45.6	41.9	53.3	71.4	75.2	77.8	79.5	76.5	61.9	47.5	42.6	59.0	39.4	55.5	77.5	62.0
2019	38.6	43.2	44.3	59.2	72.0	78.5	84.1	81.4	77.4	67.1	49.2	44.7	61.6	41.5	58.5	81.3	64.6
2020	45.0	46.3	54.0	57.6	65.5	77.8	84.3	81.3	72.3	65.1	57.3	45.0	62.6	45.3	59.0	81.1	64.9
2021	41.0	40.4	52.6	59.9	67.5	78.8	82.1	82.0	75.1	69.1	50.7	50.1	62.4	42.1	60.0	81.0	65.0
2022	38.5	45.0	52.2	57.7	68.7	77.2	82.0	79.8	72.5	59.4	54.7	40.7	60.7	44.5	59.5	79.7	62.2
2023	44.9	45.6	47.7	60.1	63.1	71.3	79.5	76.3	71.3	62.0	48.4	44.8	59.6	43.7	57.0	75.7	60.6
2024	40.5	42.3	50.0	59.1	67.6	77.2	80.0	75.7	70.6	60.5	53.4	40.9	59.8	42.5	58.9	77.6	61.5
2025	32.3	39.5	52.0	59.6	67.1	78.0	80.4	72.4	70.0	59.3	48.8	37.1	58.0	38.9	59.6	76.9	59.4
2026	36.4	37.3	50.1														
Average	37.7	40.4	48.1														

ST. INIGOES - WEBSTER NAVAL OUTLYING FIELD (NUI) AWOS Station

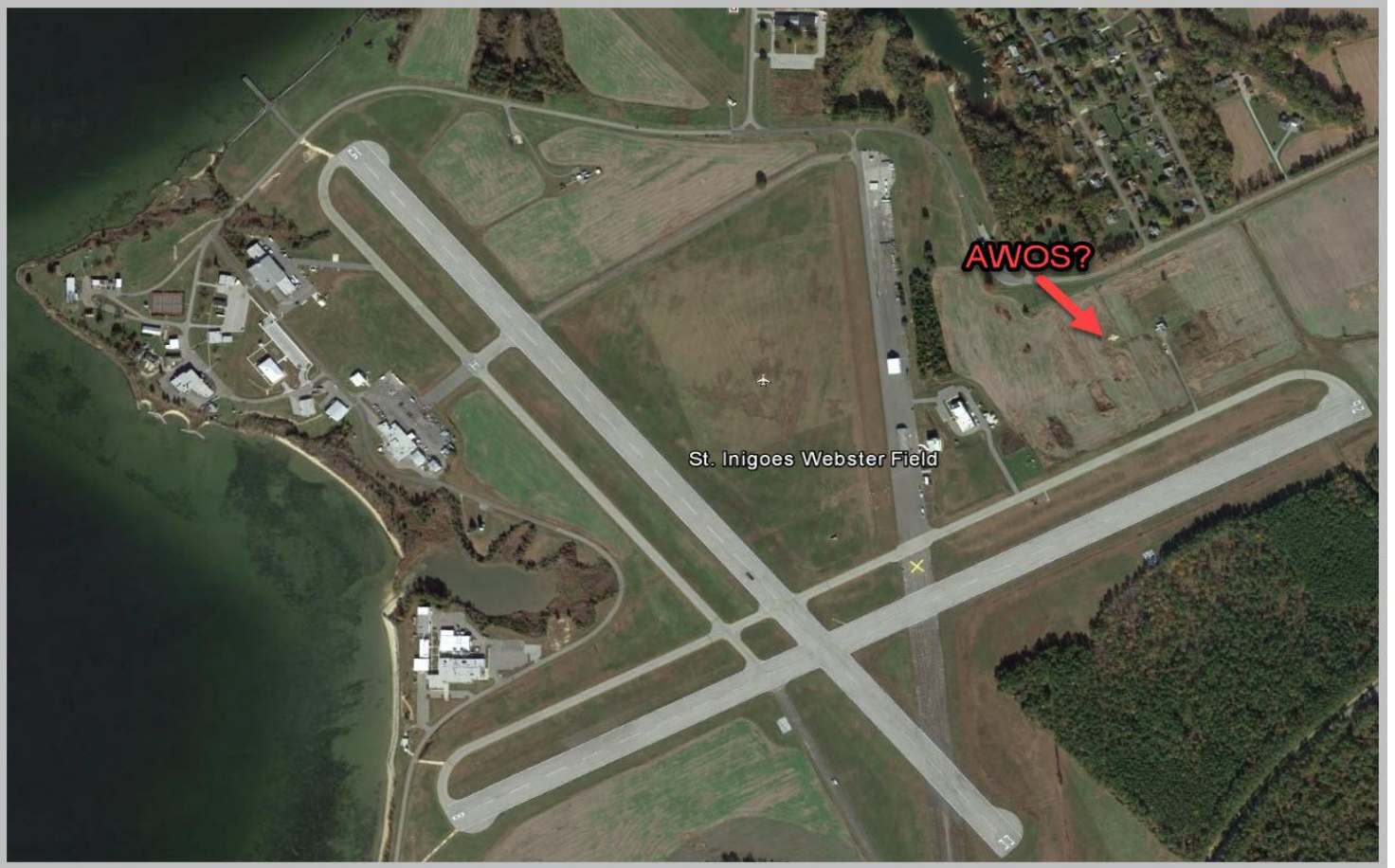


Image from Google Earth