

FT. MEADE - TIPTON AIRPORT - ODENTON, MARYLAND

AWOS Station Elevation: 151 feet/46 meters

Period of Record: 2006-Present

AVERAGE MAXIMUM TEMPERATURE (°F)

Year	Jan	Feb	Mar	Apr	May	Jun	Jul	Aug	Sep	Oct	Nov	Dec	Annual	Winter (Dec-Feb)	Spring (Mar-May)	Summer (Jun-Aug)	Autumn (Sep-Nov)
2006									75.8	66.5	59.4	52.9					67.2
2007	48.8	38.5	58.1	63.2	78.6	84.6	88.5	88.4	83.1	75.8	55.4	45.0	67.3	46.7	66.6	87.2	71.4
2008	44.6	46.8	56.0	66.2	72.0	84.6	85.6	82.7	78.3	66.1	52.5	47.3	65.2	45.5	64.7	84.3	65.7
2009	37.3	49.2	53.3	66.8	74.5	83.4	88.0	89.7	78.7	65.5	53.9	39.3	64.9	44.6	64.8	87.0	66.0
2010	37.9	35.9	55.5	67.1	72.0	82.5	85.9	81.8	76.7	64.1	53.4	38.2	62.6	37.7	64.9	83.4	64.7
2011	37.1	46.1		67.9	75.6	78.1	94.2	83.6	75.5	64.1	59.7	50.9		40.4		85.3	66.4
2012	46.9	49.4	63.8	65.4	77.2	82.5	88.1	84.6	77.7	66.3	52.2	50.2	67.0	49.1	68.8	85.0	65.4
2013	44.6	42.2	49.0	66.4	72.4	80.2	84.9	81.2	77.0	67.5	53.1	47.1	63.8	45.7	62.6	82.1	65.9
2014	37.1	40.9	48.6	64.2	74.5	80.8	83.2	80.3	76.6	67.0	52.5	46.3	62.6	41.7	62.4	81.4	65.4
2015	38.5	35.3	47.1	65.7	77.9	80.4	83.3	83.9	80.9	65.0	60.0	57.2	64.6	40.0	63.6	82.5	68.6
2016	41.1	45.4	60.7	64.8	68.5	81.3	86.1	85.8	78.9	68.4	59.5	45.2	65.5	47.9	64.6	84.4	69.0
2017	45.5	55.4	53.5	69.8	70.0	82.0	86.1	80.4	76.9	70.4	55.8	43.6	65.8	48.7	64.4	82.8	67.7
2018	41.9	50.4	48.2	61.9	77.6	79.9	85.2	84.2	78.4	65.5	49.8	46.6	64.1	45.3	62.6	83.1	64.5
2019	40.5	45.4	52.0	68.7	75.0	81.3	87.3	84.8	82.6	69.5	52.2	46.1	65.4	44.2	65.2	84.5	68.1
2020	46.6	48.9	58.8	61.4		81.2	87.3		74.7	66.3	61.8	46.2		47.2			67.6
2021	42.5	40.9	57.8	66.3	73.0	81.6	86.2	85.0	78.3	71.3	53.9	52.5	65.8	43.2	65.7	84.3	67.8
2022	38.7	50.5	57.7	63.9	73.6	80.8	85.3	84.7	76.9	63.5	58.3	45.5	65.0	47.2	65.1	83.6	66.2
2023	49.5	53.4	55.5	70.0	70.3	80.4	87.3	82.9	77.6	69.3	58.8	49.7	67.1	49.5	65.3	83.5	68.6
2024	43.8	50.0	58.0	66.7	73.5	84.9	89.5	83.5	75.9	69.9	59.7	45.1	66.7	47.8	66.1	86.0	68.5
2025	37.4	44.9	61.0	67.3	72.2	82.9	86.8	80.2	78.4	67.0	52.2	42.6	64.4	42.5	66.8	83.3	65.9
2026	39.3	41.9	61.4											41.3			
Average	42.0	45.6	55.6	66.0	73.8	81.8	86.8	83.8	77.9	67.4	55.7	46.9	65.2	44.8	65.0	84.1	67.0
Maximum	49.5	55.4	63.8	70.0	78.6	84.9	94.2	89.7	83.1	75.8	61.8	57.2	67.3	49.5	68.8	87.2	71.4
Minimum	37.1	35.3	47.1	61.4	68.5	78.1	83.2	80.2	74.7	63.5	49.8	38.2	62.6	37.7	62.4	81.4	64.5

AVERAGE MINIMUM TEMPERATURE (°F)

Year	Jan	Feb	Mar	Apr	May	Jun	Jul	Aug	Sep	Oct	Nov	Dec	Annual	Winter (Dec-Feb)	Spring (Mar-May)	Summer (Jun-Aug)	Autumn (Sep-Nov)
2006									58.0	45.3	40.9	32.3					48.1
2007	31.5	22.7	35.0	41.8	51.0	61.1	63.8	66.2	56.0	50.5	35.1	30.2	45.4	28.8	42.6	63.7	47.2
2008	25.5	27.1	34.0	43.7	46.9	61.7	63.7	59.7	57.9	42.1	35.6	29.4	43.9	27.6	41.5	61.7	45.2
2009	21.2	25.3	32.6	42.3	52.4	60.4	62.0	65.4	55.5	42.6	35.1	22.6	43.1	25.3	42.4	62.6	44.4
2010	21.7	20.9	34.0	39.1	50.2	60.3	62.3	61.9	53.2	40.8	31.3	23.6	41.6	21.7	41.1	61.5	41.8
2011	22.4	25.5		47.2	53.5	67.6	69.8	62.4	59.1	43.3	36.9	30.8		23.8		66.6	46.4
2012	27.2	30.2	39.7	39.1	55.5	58.0	67.7	64.3	54.1	44.8	30.6	32.7	45.3	29.4	44.8	63.3	43.2
2013	26.2	26.2	31.0	40.9	50.3	60.6	66.9	61.3	52.7	45.4	31.8	29.8	43.6	28.4	40.7	62.9	43.3
2014	17.1	23.5	27.2	38.8	51.2	59.8	61.9	59.6	56.5	45.3	31.5	30.8	41.9	23.5	39.1	60.4	44.5
2015	21.9	15.3	27.7	40.4	53.1	62.7	64.8	60.7	57.9	42.0	37.9	38.1	43.5	22.7	40.4	62.7	45.9
2016	21.6	27.2	36.7	39.3	50.6	58.6	66.4	67.2	59.4	46.6	33.8	28.2	44.6	29.0	42.2	64.1	46.6
2017	31.1	30.7	32.4	47.4	50.2	58.9	65.6	61.4	56.0	47.2	33.3	25.7	45.0	30.0	43.3	61.9	45.5
2018	21.0	31.7	30.3	39.1	56.6	59.8	64.8	68.9	65.4	47.1	34.3	30.3	45.8	26.1	42.0	64.5	49.0
2019	24.0	28.0	31.3	45.3	54.8	59.4	65.5	62.9	56.8	49.0	30.8	29.3	44.8	27.4	43.8	62.6	45.6
2020	28.8	30.3	37.7	39.3		60.0	67.7		55.9	46.4	37.3	28.7		29.5			46.5
2021	27.4	28.3	34.7	41.2	47.0	66.0	65.8	66.6	55.9	51.5	31.0	32.8	45.7	28.1	41.0	66.1	46.1
2022	21.1	25.6	33.5	39.7	52.1	58.0	65.5	64.6	57.8	41.3	35.5	25.0	43.3	26.5	41.8	62.7	44.9
2023	31.2	30.7	32.9	43.2	45.2	55.4	65.9	63.2	57.4	44.5	30.2	31.8	44.3	29.0	40.4	61.5	44.0
2024	26.7	28.8	35.1	43.8	54.5	60.5	67.0	63.0	57.2	41.6	36.5	27.3	45.2	29.1	44.5	63.5	45.1
2025	21.1	28.1	36.2	45.6	54.4	62.7	68.2	59.0	56.9	43.7	33.7	25.9	44.6	25.5	45.4	63.3	44.8
2026	21.8	24.9	35.8											24.2			
Average	24.5	26.5	33.6	42.0	51.6	60.6	65.5	63.2	57.0	45.0	34.2	29.3	44.2	26.8	42.2	63.1	45.4
Maximum	31.5	31.7	39.7	47.4	56.6	67.6	69.8	68.9	65.4	51.5	40.9	38.1	45.8	30.0	45.4	66.6	49.0
Minimum	17.1	15.3	27.2	38.8	45.2	55.4	61.9	59.0	52.7	40.8	30.2	22.6	41.6	21.7	39.1	60.4	41.8

AVERAGE MEAN TEMPERATURE (°F)

Year	Jan	Feb	Mar	Apr	May	Jun	Jul	Aug	Sep	Oct	Nov	Dec	Annual	Winter (Dec-Feb)	Spring (Mar-May)	Summer (Jun-Aug)	Autumn (Sep-Nov)
2006									66.9	55.9	50.1	42.6					57.6
2007	40.1	30.6	46.6	52.5	64.8	72.9	76.2	77.3	69.6	63.1	45.3	37.6	56.4	37.8	54.6	75.4	59.3
2008	35.0	37.0	45.0	55.0	59.5	73.1	74.7	71.2	68.1	54.1	44.1	38.3	54.6	36.5	53.1	73.0	55.4
2009	29.2	37.2	42.9	54.6	63.4	71.9	75.0	77.5	67.1	54.0	44.5	30.9	54.0	34.9	53.6	74.8	55.2
2010	29.8	28.4	44.8	53.1	61.1	71.4	74.1	71.8	64.9	52.4	42.4	30.9	52.1	29.7	53.0	72.5	53.2
2011	29.7	35.8		57.5	64.6	72.9	82.0	73.0	67.3	53.7	48.3	40.9		32.1		76.0	56.4
2012	37.1	39.8	51.7	52.3	66.4	70.2	77.9	74.4	65.9	55.6	41.4	41.4	56.2	39.2	56.8	74.2	54.3
2013	35.4	34.2	40.0	53.6	61.3	70.4	75.9	71.3	64.8	56.5	42.5	38.5	53.7	37.0	51.6	72.5	54.6
2014	27.1	32.2	37.9	51.5	62.8	70.3	72.5	70.0	66.6	56.1	42.0	38.6	52.3	32.6	50.7	70.9	54.9
2015	30.2	25.3	37.4	53.1	65.5	71.5	74.0	72.3	69.4	53.5	48.9	47.7	54.1	31.3	52.0	72.6	57.3
2016	31.3	36.3	48.7	52.0	59.5	70.0	76.3	76.5	69.1	57.5	46.7	36.7	55.0	38.4	53.4	74.2	57.8
2017	38.3	43.1	42.9	58.6	60.1	70.4	75.8	70.9	66.4	58.8	44.5	34.6	55.4	39.3	53.9	72.4	56.6
2018	31.5	41.0	39.3	50.5	67.1	69.9	75.0	76.6	71.9	56.3	42.1	38.5	55.0	35.7	52.3	73.8	56.7
2019	32.2	36.7	41.6	57.0	64.9	70.3	76.4	73.9	69.7	59.3	41.5	37.7	55.1	35.8	54.5	73.5	56.8
2020	37.7	39.6	48.3	50.3		70.6	77.5		65.3	56.3	49.6	37.4		38.3			57.1
2021	35.0	34.6	46.3	53.7	60.0	73.8	76.0	75.8	67.1	61.4	42.4	42.7	55.7	35.7	53.3	75.2	57.0
2022	29.9	38.1	45.6	51.8	62.8	69.4	75.4	74.7	67.4	52.4	46.9	35.3	54.1	36.9	53.4	73.2	55.6
2023	40.7	42.0	44.2	56.6	57.8	67.9	76.6	73.1	67.5	56.9	44.5	40.7	55.7	39.3	52.9	72.5	56.7
2024	35.2	39.4	46.6	55.3	64.0	72.7	78.3	73.3	66.6	55.8	48.1	36.2	56.0	38.4	55.3	74.8	56.8
2025	29.2	36.5	48.6	56.4	63.3	72.8	77.5	69.6	67.6	55.4	42.9	34.					

FORT MEADE - TIPTON AIRPORT (FME)

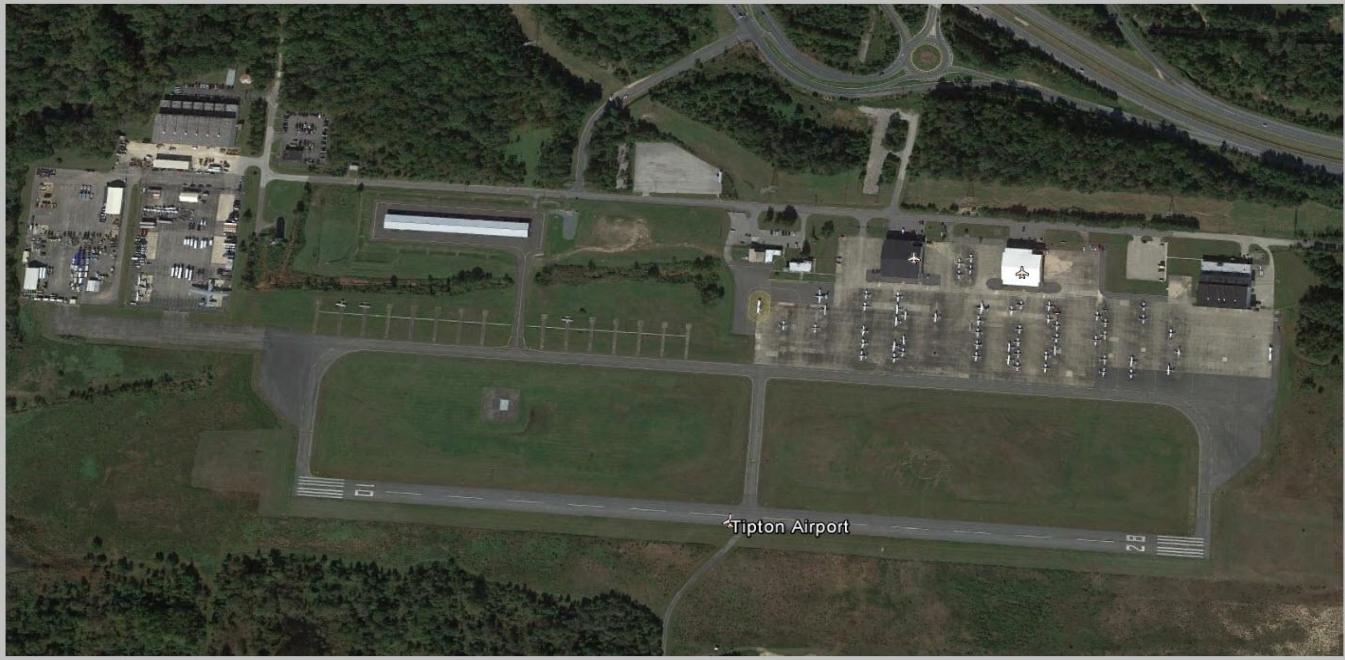


Image from Google Earth