

JOINT BASE ANDREWS (ANDREWS AIR FORCE BASE) (ADW), CAMP SPRINGS, MARYLAND

AWOS Station Elevation: 282 feet/86 meters

Period of Record: 1943-Present

AVERAGE MAXIMUM TEMPERATURE (°F)

Year	Jan	Feb	Mar	Apr	May	Jun	Jul	Aug	Sep	Oct	Nov	Dec	Annual	Winter (Dec-Feb)	Spring (Mar-May)	Summer (Jun-Aug)	Autumn (Sep-Nov)
1943							86.3	89.0	76.8	64.4	54.9	44.2					65.4
1944	43.9	44.3	50.2	61.9	80.6	83.1	87.9	84.4	77.6	65.3	54.2	40.7	64.5	44.2	64.2	85.1	65.7
1945	35.5	45.3	66.1	68.0	71.6	82.9	83.2	83.1	79.6	66.6	56.5	37.1	64.6	40.5	68.5	83.1	67.6
1946	43.0	46.6	61.8	65.2	73.7	81.0	85.1	80.0	80.3	71.4	59.8	49.4	66.4	42.2	66.9	82.0	70.5
1947	48.6	39.0	47.6	67.1	74.9	80.0	83.7	87.8	77.8	73.1	51.9	43.0	64.5	45.7	63.2	83.8	67.6
1948	33.9	44.4	57.0	64.8	72.8	82.5	85.5	84.2	78.4	64.0	59.9	47.2	64.5	40.4	64.9	84.1	67.4
1949	50.2	50.9	54.7	63.7	75.0	82.6	88.1	84.9	75.6	71.2	56.4	48.8	66.8	49.4	64.5	85.2	67.7
1950	55.5	44.8	49.6	61.1	71.0	81.6	82.9	83.0	72.7	68.5	56.2	41.7	64.1	49.7	60.6	82.5	65.8
1951	47.3	46.1	52.8	65.0	74.2	81.9	88.1	85.7	80.0	70.0	51.4	47.2	65.8	45.0	64.0	85.2	67.1
1952	47.2	47.2	50.3	64.9	72.0	85.1	88.8	83.7	78.2	65.4	55.4	44.6	65.2	47.2	62.4	85.9	66.4
1953	46.8	49.2	53.7	64.0	77.4	82.4	88.8	85.6	79.8	71.1	58.2	49.0	67.2	46.9	65.0	85.6	69.7
1954	43.8	52.8	53.5	71.1	71.6	84.1	89.0	83.2	83.5	71.1	52.4	43.9	66.7	48.5	65.4	85.4	69.0
1955	41.2	46.4	55.7	66.8	76.8	78.7	90.1	85.2	76.3	69.8	54.9	40.2	65.2	43.8	66.5	84.6	67.0
1956	39.8	48.3	50.9	63.0	73.3	82.5	83.8	83.6	75.5	67.1	54.6	52.6	64.6	42.8	62.4	83.3	65.8
1957	39.0	47.5	52.2	69.0	76.3	84.5	87.7	83.7	78.1	62.8	56.8	48.0	65.5	46.3	65.9	85.3	65.9
1958	40.1	37.1	46.1	64.8	73.5	79.5	86.9	82.8	78.3	67.1	57.5	39.1	62.7	41.7	61.5	83.1	67.6
1959	43.8	47.4	54.6	67.1	77.3	84.0	84.7	86.3	81.0	68.8	54.8	48.1	66.5	43.5	66.3	85.0	68.2
1960	42.3	43.6	41.3	71.6	71.3	82.3	83.8	84.8	76.5	65.5	57.8	38.9	63.3	44.7	61.4	83.6	66.6
1961	36.5	45.4	55.5	59.4	69.8	81.8	86.5	83.9	83.7	70.0	56.8	42.4	64.3	40.3	63.6	84.1	70.2
1962	42.0	40.0	50.9	64.2	76.3	81.1	81.7	83.7	74.2	67.4	51.4	39.7	62.7	41.5	63.8	82.2	64.3
1963	39.7	39.0	57.0	66.9	72.8	80.1	84.7	82.2	73.0	71.6	57.5	37.3	63.5	39.5	65.6	82.3	67.4
1964	44.7	41.5	54.6	60.6	75.3	82.3	83.6	80.2	76.6	62.8	60.2	49.8	64.4	41.2	63.5	82.0	66.5
1965	42.5	46.1	47.8	60.4	78.7	79.7	83.8	83.9	80.1	66.1	56.4	48.4	64.5	46.1	62.3	82.5	67.5
1966	36.8	42.0	55.9	58.6	72.9	83.1	88.3	85.4	73.7	64.5	57.3	42.6	63.4	42.4	62.5	85.6	65.2
1967	47.1	40.3	51.4	65.8	67.0	82.4	82.6	81.1	74.9	65.3	50.4	45.3	62.8	43.3	61.4	82.0	63.5
1968	37.7	41.1	58.7	66.8	71.1	80.7	84.9	85.7	78.3	67.2	56.0	41.8	64.2	41.4	65.5	83.7	67.1
1969	40.0	40.9	49.6	68.1	77.3	83.9	86.1	83.3	77.3	67.1	53.9	40.8	64.0	40.9	65.0	84.4	66.1
1970	35.7	43.8	47.3	62.9	76.3	81.3	84.8	84.7	83.4	68.6	55.3	45.3	64.1	40.1	62.2	83.6	69.1
1971	37.1	45.6	50.5	65.9	70.6	82.0	84.7	82.9	77.3	69.8	55.2	53.2	64.6	42.7	62.4	83.2	67.4
1972	44.9	43.2	52.7	63.3	71.7	76.1	83.6	83.5	76.8	62.2	51.4	48.3	63.1	47.1	62.6	81.0	63.5
1973	43.8	43.1	57.1	63.3	70.7	84.1	86.1	86.5	80.2	70.0	58.1	47.5	65.9	45.1	63.7	85.6	69.4
1974	47.0	44.9	55.5	68.1	72.0	76.4	84.4	82.9	76.1	67.1	59.7	50.0	65.3	46.4	65.2	81.3	67.6
1975	48.0	47.3	52.8	60.9	76.7	83.4	85.7	88.1	74.7	70.8	63.9	46.9	66.6	48.4	63.5	85.7	69.8
1976	38.2	57.1	59.1	70.4	72.9	84.9	85.5	82.5	76.7	62.1	50.9	43.2	65.3	47.4	67.5	84.3	63.2
1977	31.5	47.4	60.3	68.4	75.8	79.8	87.7	86.9	78.9	63.3	54.5	42.5	64.8	40.7	68.2	84.8	65.6
1978	35.7	33.9	50.3	66.3	70.5	82.0	83.3	85.7	78.5	68.1	59.1	49.4	63.6	37.4	62.4	83.7	68.5
1979	40.4	32.2	60.1	61.2	73.2	77.2	82.8	84.0	76.2	66.0	62.0	50.9	63.8	40.7	64.8	81.4	68.1
1980	42.5	40.6	50.9	66.5	77.0	81.5	87.4	87.9	83.0	66.5	53.4	45.5	65.2	44.6	64.8	85.6	67.7
1981	37.0	49.1	52.7	70.3	72.5	83.3	84.6	81.4	76.5	64.3	55.6	40.7	64.0	43.9	65.1	83.1	65.5
1982	32.8	43.3	51.7	62.4	77.2	78.2	85.3	80.6	75.9	67.1	59.4	51.4	63.8	38.9	63.8	81.4	67.5
1983	42.4	43.9	53.1	61.0	72.4	81.0	88.8	86.9	80.5	67.3	58.4	40.7	64.7	45.9	62.2	85.6	68.7
1984	37.5	49.5	46.5	60.3	71.2	83.2	81.4	84.4	76.7	73.0	55.8	53.7	64.4	42.5	59.3	83.0	68.5
1985	38.4	45.2	55.1	70.1	75.9	79.9	86.6	82.6	80.4	68.5	61.3	44.1	65.7	45.7	67.0	83.0	70.0
1986	42.4	38.9	55.7	62.8	75.5	85.3	88.7	82.1	76.7	68.1	53.1	46.7	64.7	41.8	64.7	85.3	66.0
1987	40.4	40.6	54.7	61.9	74.2	83.5	89.9	84.9	78.2	63.5	58.8	47.8	64.9	42.6	63.6	86.1	66.8
1988	36.5	44.9	56.5	61.5	74.6	85.1	91.7	86.5	74.4	62.1	57.2	47.1	64.8	43.1	64.2	87.8	64.5
1989	47.6	44.3	54.5	62.9	70.2	83.9	86.4	85.3	78.2	69.2	55.9	33.9	64.3	46.3	62.5	85.2	67.8
1990	51.1	54.8	59.2	66.0	71.7	82.7	87.6	82.4	75.7	71.2	61.5	51.8	68.0	46.6	65.6	84.2	69.5
1991	44.6	51.1	55.7	66.6	80.2	83.5	87.3	86.7	78.5	69.1	56.4	49.4	67.4	49.2	67.5	85.8	68.0
1992	45.0	48.3	52.4	64.0	70.4	79.2	85.4	80.4	75.5	64.1	55.5	45.7	63.8	47.6	62.3	81.6	65.0
1993	45.7	41.6	48.4	64.3	76.2	83.8	90.5	86.4	78.2	65.0	56.7	43.1	65.0	44.4	63.0	86.9	66.6
1994	34.4	43.1	52.8	70.9	71.5	87.4	88.9	82.1	78.2	67.5	63.5	51.5	66.0	40.2	65.1	86.1	69.7
1995	45.6	44.0	61.1	68.8	76.7	84.8	92.6	92.3	81.7	74.4	53.6	44.2	68.3	47.0	68.9	89.9	69.9
1996	41.9	46.1	52.7	68.3	73.3	86.1	84.7	82.1	77.1	66.5	50.0	48.2	64.7	44.1	64.8	84.3	64.5
1997	41.8	50.1	56.0	63.0	71.7	80.3	87.8	84.3	77.2	66.7	51.5	49.2	65.0	46.7	63.6	84.1	65.1
1998	48.6	49.1	55.6	66.8	76.0	81.2	87.4	88.3	84.6	68.1	58.8	51.2	68.0	49.0	66.1	85.6	70.5
1999	45.5	48.0	52.7	65.8	76.8	82.4	91.2	87.7	76.8	65.8	58.9	49.7	66.8	48.2	65.1	87.1	67.2
2000	41.8	49.5	60.7	62.3	75.9	81.9	80.8	81.4	74.7	68.5	53.0	37.7	64.0	47.0	66.3	81.4	65.4
2001	40.1	47.5	49.0	65.4	72.3	81.0	80.2	83.8	74.9	70.1	65.0	52.5	65.2	41.8	62.2	81.7	70.0
2002	49.5	52.0	57.0	68.8	74.4	84.5	88.8	89.2	80.2	64.0	54.5	43.6	67.2	51.3	66.7	87.5	66.2
2003	36.3	39.3	56.7	64.8	67.8	78.6	85.2	85.4	78.2	66.4	61.3	45.3	63.8	39.7	63.1	83.0	68.6
2004	35.1	45.9	58.1	69.6	82.0	80.3	84.5	82.0	79.0	64.3	58.0	49.7	65.7	42.1	69.9	82.3	67.1
2005	41.6	48.0	49.5	65.7	68.9	82.6	86.6	86.9	83.0	65.9	59.4	42.2	65.0	46.4	61.4	85.4	69.4
2006	53.1	45.2	56.2	68.1	73.5	81.5	87.0	87.4	73.5	65.1	58.5	53.0	66.8	46.9	65.9	85.3	65.7
2007	47.9	36.8	57.2	61.6	76.8	82.9	87.7	87.0	80.4	74.1	55.3	45.2	66.1	45.9	65.2	85.9	70.0
2008	44.9	47.7	55.8	65.3	72.3	84.9	86.1	83.7	78.0	65.7	52.7	47.7	65.4	45.9	64.4	84.9	65.5
2009	37.4	48.4	52.4	66.3	73.4	80.5	84.1	85.2	74.1	64.1	57.6	42.6	63.8	44.5	64.1	83.3	65.3
2010	40.6	37.8	57.6	69.9	76.0	87.1	89.9	85.2	82.1	67.7	56.5	38.2	65.7	40.3	67.9	87.4	68.7
2011	36.9	49.7	52.9	67.8	76.5	85.0	90.8	85.0	79.0	64.9	61.1	51.7	66.8	41.6	65.7	86.9	68.3
2012	47.8	50.0	64.2	66.0	77.7	82.9	90.0	85.3	78.2	66.6	52.7	51.1	67.7	49.9	69.3	86.0	65.8
2013	46.1	42.8	48.7	66.7	73.7	83.1	86.9	82.3	78.7	68.4	53.6	48.6	65.0	46.7	63.0	84.1	66.9
2014	38.3	42.7	49.3	64.6	75.7	83.1	85.2	81.9	78.2	68.0	53.7	47.5	64.0	43.2	63.2	83.4	

AVERAGE MINIMUM TEMPERATURE (°F)

Year	Jan	Feb	Mar	Apr	May	Jun	Jul	Aug	Sep	Oct	Nov	Dec	Annual	Winter (Dec-Feb)	Spring (Mar-May)	Summer (Jun-Aug)	Autumn (Sep-Nov)
1943							68.3	67.2	57.0	46.4	36.0	27.0					46.4
1944	28.9	28.9	33.4	42.7	59.8	63.9	67.4	65.9	62.1	46.9	38.5	25.7	47.0	28.2	45.3	65.7	49.2
1945	23.3	29.1	43.8	48.3	52.2	63.6	67.3	64.6	63.6	46.7	39.3	25.0	47.2	26.0	48.1	65.2	49.9
1946	28.2	29.0	42.0	43.4	54.7	61.7	65.3	63.5	59.9	50.6	42.3	31.2	47.6	27.4	46.7	63.5	50.9
1947	32.8	20.9	29.9	44.8	53.7	61.4	65.7	68.9	59.9	53.9	37.3	27.9	46.4	28.3	42.8	65.4	50.3
1948	20.7	26.7	37.2	44.9	54.6	62.7	67.2	65.9	59.4	47.4	42.3	32.9	46.8	25.1	45.6	65.2	49.7
1949	34.7	36.5	36.6	43.9	54.2	64.9	71.1	68.1	57.2	54.0	38.3	32.1	49.3	34.7	44.9	68.0	49.8
1950	38.2	30.3	31.3	41.2	54.4	62.8	66.5	65.2	58.3	50.5	37.6	27.1	46.9	33.5	42.3	64.8	48.8
1951	29.3	28.0	34.9	44.1	53.5	63.2	68.4	67.0	59.6	52.0	34.1	32.1	47.2	28.1	44.2	66.2	48.6
1952	32.5	32.2	33.9	47.1	53.8	65.9	70.3	66.9	58.2	43.6	39.7	31.4	48.0	32.3	44.9	67.7	47.2
1953	32.7	32.3	37.5	45.3	59.6	64.6	69.9	66.8	59.8	50.7	38.7	33.2	49.3	32.2	47.5	67.1	49.7
1954	27.5	33.6	34.9	48.1	53.3	63.9	67.5	66.4	62.9	52.0	37.2	29.7	48.1	31.4	45.4	65.9	50.7
1955	27.6	27.6	37.5	47.6	55.3	59.0	71.3	69.4	59.9	47.1	34.4	24.2	46.7	28.3	46.8	66.5	47.1
1956	26.9	31.8	32.7	42.0	50.9	62.0	66.6	65.2	56.6	50.4	37.6	36.7	46.6	27.6	41.9	64.6	48.2
1957	23.8	31.7	36.2	46.4	54.0	64.5	65.4	62.3	61.3	44.0	39.7	32.5	46.8	30.7	45.5	64.1	48.3
1958	25.6	23.0	33.2	45.9	52.7	59.0	68.7	66.0	58.0	48.9	40.6	23.4	45.4	27.0	43.9	64.6	49.2
1959	24.2	27.1	33.4	46.9	57.7	64.0	68.6	70.0	62.1	53.0	36.6	33.4	48.1	24.9	46.0	67.5	50.6
1960	29.8	29.3	26.8	48.3	52.6	63.0	66.1	68.4	61.9	50.1	39.6	22.3	46.5	30.9	42.6	65.8	50.5
1961	22.7	31.0	38.1	42.5	52.5	62.6	68.4	68.0	65.6	49.7	43.3	30.4	47.9	25.3	44.3	66.3	52.9
1962	26.9	27.8	35.2	46.0	57.9	64.5	64.9	66.0	57.8	50.1	37.1	25.0	46.6	28.4	46.4	65.1	48.3
1963	24.4	22.2	37.9	46.4	51.6	60.6	66.1	63.1	53.9	46.8	40.9	23.8	44.8	23.8	45.3	63.3	47.2
1964	27.1	28.1	35.5	43.0	55.2	62.0	67.0	62.0	56.4	43.1	38.5	34.7	46.0	26.3	44.5	63.7	46.0
1965	25.6	26.4	32.3	42.8	58.6	61.8	66.8	65.7	62.1	46.7	38.2	31.2	46.5	28.9	44.6	64.8	49.0
1966	24.1	28.0	35.5	41.6	52.8	62.5	67.8	66.8	58.8	44.9	38.1	29.4	45.8	27.8	43.3	65.7	47.2
1967	30.9	22.4	34.2	45.1	48.1	61.3	66.7	65.5	55.4	44.8	33.9	30.2	44.9	27.6	42.5	64.5	44.7
1968	21.4	24.2	37.3	46.1	52.9	62.4	67.9	67.9	58.6	50.3	41.0	27.5	46.4	25.3	45.4	66.0	50.0
1969	26.3	30.1	33.0	46.9	56.4	66.9	70.3	67.0	60.5	46.8	38.0	29.7	47.7	28.0	45.5	68.1	48.4
1970	20.5	26.3	32.2	44.1	56.3	62.7	68.2	66.7	62.4	52.9	40.3	30.3	46.9	25.5	44.2	65.8	51.9
1971	23.2	29.3	33.0	41.1	52.4	64.6	66.4	65.5	63.3	56.4	38.4	36.0	47.5	27.6	42.2	65.5	52.7
1972	30.1	26.9	35.1	41.9	53.8	60.3	68.1	65.1	60.5	44.6	36.6	34.8	46.5	31.0	43.6	64.5	47.2
1973	27.2	26.5	41.3	45.7	52.7	67.3	69.3	70.8	64.5	50.4	40.3	33.4	49.1	29.5	46.5	69.1	51.7
1974	33.4	29.0	38.1	46.5	54.7	60.2	65.9	67.1	59.1	45.7	42.6	34.3	48.0	31.9	46.4	64.4	49.1
1975	32.6	33.6	37.9	44.7	58.8	65.8	68.2	69.6	60.0	53.9	44.5	32.2	50.1	33.5	47.2	67.8	52.8
1976	23.0	35.5	39.5	46.2	53.9	67.0	68.0	64.4	57.8	46.5	32.9	26.7	46.8	30.2	46.5	66.5	45.7
1977	16.5	28.0	40.6	45.2	54.4	59.5	67.4	67.8	62.6	46.3	42.4	27.5	46.5	23.7	46.7	64.9	50.4
1978	22.2	19.9	35.2	45.6	53.3	61.7	65.8	69.9	59.2	46.3	41.7	30.5	45.9	23.2	44.7	65.8	49.1
1979	26.0	19.3	37.5	44.4	53.8	57.6	66.8	67.0	60.7	47.6	43.4	33.8	46.5	25.3	45.2	63.8	50.6
1980	29.7	25.2	33.4	46.9	56.7	60.5	68.9	69.1	64.1	48.4	36.8	29.5	47.4	29.6	45.7	66.2	49.8
1981	22.0	30.5	33.4	48.3	52.7	66.8	68.4	64.7	59.5	46.2	38.9	28.4	46.6	27.3	44.8	66.6	48.2
1982	18.6	28.2	34.7	41.0	56.4	63.1	68.3	63.1	58.2	48.2	40.8	37.6	46.5	25.1	44.0	64.8	49.0
1983	29.8	28.9	38.8	45.0	52.9	63.3	68.0	68.3	59.0	50.4	40.2	27.9	47.7	32.1	45.6	66.5	49.9
1984	22.4	34.6	32.6	43.5	52.4	63.0	65.9	68.7	57.5	56.4	36.9	37.2	47.6	28.3	42.8	65.9	50.3
1985	24.2	29.9	37.5	45.8	55.8	61.7	67.5	65.3	59.4	51.8	47.4	27.7	47.8	30.4	46.4	64.8	52.8
1986	25.5	28.6	34.3	42.6	54.2	62.5	69.8	65.3	59.6	49.2	37.4	31.8	46.7	27.3	43.7	65.9	48.7
1987	27.1	25.7	34.8	44.6	53.3	63.3	70.2	65.8	61.2	41.7	39.9	33.8	46.8	28.2	44.2	66.5	47.6
1988	21.0	28.3	35.4	43.5	55.2	62.0	70.0	67.4	56.4	42.7	39.5	30.2	46.0	27.7	44.7	66.5	46.2
1989	31.5	30.0	36.8	44.0	53.5	68.2	70.8	70.0	61.8	49.6	38.2	19.4	47.8	30.5	44.8	69.7	49.9
1990	33.2	34.5	40.0	45.1	54.5	63.4	71.2	66.3	56.1	49.0	37.9	33.5	48.7	29.1	46.6	67.0	47.7
1991	26.3	30.2	38.0	46.1	58.0	61.3	68.6	66.0	57.0	46.0	37.8	31.0	47.2	30.0	47.4	65.3	46.9
1992	26.8	29.3	33.0	42.7	49.2	58.6	67.5	61.9	58.2	43.7	39.1	31.2	45.1	29.1	41.6	62.7	47.0
1993	30.3	24.1	32.5	42.4	53.8	64.1	70.3	65.7	59.0	45.2	36.5	28.0	46.0	28.5	42.9	66.7	46.9
1994	19.6	25.4	34.3	47.7	48.4	64.8	70.4	63.8	57.8	45.9	42.7	33.7	46.2	24.3	43.5	66.3	48.8
1995	32.2	26.4	39.0	45.2	56.2	66.3	72.7	70.1	61.7	52.4	36.1	29.1	49.0	30.7	46.8	69.7	50.1
1996	26.0	31.0	34.1	47.3	54.9	65.5	67.6	63.0	59.8	46.8	32.2	32.5	46.7	28.7	45.4	65.4	46.3
1997	25.5	32.9	36.4	41.4	49.3	59.5	67.0	63.7	56.9	45.7	36.6	30.4	45.4	30.3	42.4	63.4	46.4
1998	34.1	33.6	37.8	45.1	57.1	62.8	69.0	68.7	63.6	48.8	35.7	33.0	49.1	32.7	46.6	66.8	49.3
1999	27.7	28.9	34.0	43.2	51.9	61.9	69.0	67.3	60.0	45.1	39.6	32.7	46.8	29.8	43.0	66.1	48.2
2000	25.9	31.0	39.2	44.0	55.3	63.5	64.0	64.1	56.2	45.9	33.7	20.7	45.3	29.9	46.2	63.9	45.3
2001	24.6	27.5	30.0	42.9	51.1	61.5	60.7	65.7	55.1	45.5	40.3	32.7	44.8	24.3	41.3	62.6	47.0
2002	31.0	28.3	35.5	47.3	51.9	61.7	67.9	68.2	60.3	49.0	37.6	26.1	47.1	30.7	44.9	65.9	49.0
2003	22.7	24.7	34.8	43.7	52.8	62.3	67.3	68.2	61.5	45.0	41.4	28.6	46.1	24.5	43.8	65.9	49.3
2004	20.4	27.4	37.4	48.1	61.7	62.4	68.5	65.7	60.8	48.2	40.3	30.2	47.6	25.4	49.0	65.5	49.8
2005	26.7	28.7	32.8	44.4	49.7	64.1	68.6	68.9	61.2	50.9	38.8	27.8	46.9	28.6	42.3	67.2	50.3
2006	33.3	28.7	35.9	46.0	52.6	63.6	69.1	67.9	58.6	46.1	41.1	33.3	48.0	29.9	44.8	66.8	48.6
2007	31.8	22.3	35.3	42.8	54.2	63.1	66.1	68.6	59.6	53.1	37.7	32.0	47.2	29.1	44.1	66.0	50.1
2008	29.0	28.6	36.4	46.6	51.5	64.5	67.8	63.9	60.3	45.1	38.4	31.8	47.0	29.9	44.8	65.4	48.0
2009	22.7	29.0	33.9	45.4	55.2	63.7	65.0	67.9	58.7	48.0	41.3	28.6	46.6	27.8	44.8	65.5	49.4
2010	25.8	24.7	39.9	46.9	56.5	67.4	69.6	68.4	60.5	49.0	38.3	25.2	47.7	26.4	47.8	68.4	49.2
2011	24.2	28.7	35.7	48.5	57.7	65.6	70.8	66.4	62.9	47.6	40.8	33.8	48.5	26.0	47.3	67.6	50.4
2012	29.9	33.1	44.3	44.7	59.2	61.5	71.7	67.9	58.8	49.6	34.5	35.5	49.2	32.2	49.4	67.0	47.6
2013	30.4	28.9	33.3	45.2	54.8	64.8	70.7	65.4	56.3	49.7	34.5	30.3	47.0	31.6	44.5	67.0	46.8
2014	18.9	25.3	28.6	41.0	55.6	63.7	65.0	63.2	59.6	49.5	34.4	33.2	44.8	24.8	41.7	64.0	47.8
2015	23.9	16.9	31.0	42.7	58.3	65.5	68.4	64.6	62.0	46.6	41.7	41.1	46.9	24.6	44.0	66.2	50.1

AVERAGE MEAN TEMPERATURE (°F)																	
Year	Jan	Feb	Mar	Apr	May	Jun	Jul	Aug	Sep	Oct	Nov	Dec	Annual	Winter (Dec-Feb)	Spring (Mar-May)	Summer (Jun-Aug)	Autumn (Sep-Nov)
1943							77.3	78.1	66.9	55.4	45.4	35.6					55.9
1944	36.4	36.6	41.8	52.3	70.2	73.5	77.6	75.1	69.8	56.1	46.3	33.2	55.7	36.2	54.8	75.4	57.4
1945	29.4	37.2	54.9	58.1	61.9	73.3	75.2	73.9	71.6	56.7	47.9	31.1	55.9	33.2	58.3	74.1	58.7
1946	35.6	37.8	51.9	54.3	64.2	71.3	75.2	71.8	70.1	61.0	51.1	40.3	57.0	34.8	56.8	72.8	60.7
1947	40.7	29.9	38.8	56.0	64.3	70.7	74.7	78.4	68.8	63.5	44.6	35.4	55.5	37.0	53.0	74.6	59.0
1948	27.3	35.6	47.1	54.9	63.7	72.6	76.3	75.1	68.9	55.7	51.1	40.1	55.7	32.8	55.2	74.7	58.6
1949	42.5	43.7	45.6	53.8	64.6	73.7	79.6	76.5	66.4	62.6	47.4	40.4	58.1	42.1	54.7	76.6	58.8
1950	46.8	37.5	40.4	51.2	62.7	72.2	74.7	74.1	65.5	59.5	46.9	34.4	55.5	41.6	51.4	73.7	57.3
1951	38.3	37.1	43.9	54.5	63.8	72.5	78.3	76.3	69.8	61.0	42.8	39.6	56.5	36.6	54.1	75.7	57.9
1952	39.8	39.7	42.1	56.0	62.9	75.5	79.6	75.3	68.2	54.5	47.6	38.0	56.6	39.7	53.7	76.8	56.8
1953	39.8	40.8	45.6	54.7	68.5	73.5	79.4	76.2	69.8	60.9	48.5	41.1	58.2	39.5	56.2	76.4	59.7
1954	35.7	43.2	44.2	59.6	62.4	74.0	78.2	74.8	73.2	61.6	44.8	36.8	57.4	40.0	55.4	75.7	59.9
1955	34.4	37.0	46.6	57.2	66.1	68.9	80.7	77.3	68.1	58.5	44.7	32.2	56.0	36.1	56.6	75.6	57.1
1956	33.4	40.0	41.8	52.5	62.1	72.3	75.2	74.4	66.0	58.7	46.1	44.6	55.6	35.2	52.1	74.0	57.0
1957	31.4	39.6	44.2	57.7	65.1	74.5	76.6	73.0	69.7	53.4	48.2	40.2	56.1	38.5	55.7	74.7	57.1
1958	32.8	30.1	39.7	55.3	63.1	69.2	77.8	74.4	68.2	58.0	49.0	31.3	54.1	34.4	52.7	73.8	58.4
1959	34.0	37.3	44.0	57.0	67.5	74.0	76.6	78.2	71.6	60.9	45.7	40.8	57.3	34.2	56.1	76.3	59.4
1960	36.1	36.5	34.1	60.0	62.0	72.7	75.0	76.6	69.2	57.8	48.7	30.6	54.9	37.8	52.0	74.7	58.6
1961	29.6	38.2	46.8	51.0	61.1	72.2	77.5	75.9	74.7	59.9	50.1	36.4	56.1	32.8	53.0	75.2	61.5
1962	34.5	33.9	43.1	55.1	67.1	72.8	73.3	74.9	66.0	58.7	44.3	32.4	54.7	34.9	55.1	73.7	56.3
1963	32.0	30.6	47.4	56.6	62.2	70.3	75.4	72.7	63.4	59.2	49.2	30.5	54.1	31.7	55.4	72.8	57.3
1964	35.9	34.8	45.1	51.8	65.2	72.2	75.3	71.1	66.5	53.0	49.4	42.3	55.2	33.7	54.0	72.9	56.3
1965	34.0	36.3	40.1	51.6	68.6	70.8	75.3	74.8	71.1	56.4	47.3	39.8	55.5	37.5	53.1	73.6	58.3
1966	30.4	35.0	45.7	50.1	62.8	72.8	78.0	76.1	66.2	54.7	47.7	36.0	54.6	35.1	52.9	75.6	56.2
1967	39.0	31.3	42.8	55.4	57.6	71.9	74.6	73.3	65.2	55.1	42.1	37.7	53.8	35.4	51.9	73.3	54.1
1968	29.5	32.7	48.0	56.5	62.0	71.5	76.4	76.8	68.5	58.7	48.5	34.7	55.3	33.3	55.5	74.9	58.6
1969	33.2	35.5	41.3	57.5	66.8	75.4	78.2	75.2	68.9	57.0	46.0	35.3	55.8	34.4	55.2	76.2	57.3
1970	28.1	35.0	39.8	53.5	66.3	72.0	76.5	75.7	72.9	60.7	47.8	37.8	55.5	32.8	53.2	74.7	60.5
1971	30.2	37.4	41.7	53.5	61.5	73.3	75.6	74.2	70.3	63.1	46.8	44.6	56.0	35.1	52.3	74.4	60.1
1972	37.5	35.1	43.9	52.6	62.8	68.2	75.8	74.3	68.7	53.4	44.0	41.6	54.8	39.0	53.1	72.8	55.3
1973	35.5	34.8	49.2	54.5	61.7	75.7	77.7	78.7	72.4	60.2	49.2	40.4	57.5	37.3	55.1	77.4	60.6
1974	40.2	36.9	46.8	57.3	63.3	68.3	75.2	75.0	67.6	56.4	51.2	42.1	56.7	39.2	55.8	72.8	58.4
1975	40.3	40.4	45.4	52.8	67.8	74.6	76.9	78.8	67.3	62.4	54.2	39.5	58.4	40.9	55.3	76.8	61.3
1976	30.6	46.3	49.3	58.3	63.4	75.9	76.7	73.4	67.2	54.3	41.9	34.9	56.0	38.8	57.0	75.4	54.5
1977	24.0	37.7	50.4	56.8	65.1	69.6	77.6	77.3	70.7	54.8	48.4	35.0	55.6	32.2	57.5	74.8	58.0
1978	29.0	26.9	42.7	55.9	61.9	71.9	74.6	77.8	68.8	57.2	50.4	40.0	54.7	30.3	53.5	74.7	58.8
1979	33.2	25.8	48.8	52.8	63.5	67.4	74.8	75.5	68.5	56.8	52.7	42.4	55.2	33.0	55.0	72.6	59.3
1980	36.1	32.9	42.2	56.7	66.9	71.0	78.2	78.5	73.6	57.5	45.1	37.5	56.3	37.1	55.2	75.9	58.7
1981	29.5	39.8	43.1	59.3	62.6	75.0	76.5	73.0	68.0	55.3	47.2	34.6	55.3	35.6	55.0	74.8	56.8
1982	25.7	35.7	43.2	51.7	66.8	70.7	76.8	71.8	67.0	57.6	50.1	44.5	55.1	32.0	53.9	73.1	58.2
1983	36.1	36.4	46.0	53.0	62.6	72.2	78.4	77.6	69.7	58.8	49.3	34.3	56.2	39.0	53.9	76.1	59.3
1984	29.9	42.0	39.6	51.9	61.8	73.1	73.7	76.6	67.1	64.7	46.4	45.5	56.0	35.4	51.1	74.4	59.4
1985	31.3	37.5	46.3	57.9	65.9	70.8	77.1	73.9	69.9	60.1	54.3	35.9	56.7	38.1	56.7	73.9	61.4
1986	33.9	33.7	45.0	52.7	64.8	73.9	79.3	73.7	68.1	58.6	45.3	39.2	55.7	34.5	54.2	75.6	57.3
1987	33.7	33.2	44.8	53.3	63.7	73.4	80.1	75.4	69.7	52.6	49.4	40.8	55.8	35.4	53.9	76.3	57.2
1988	28.7	36.6	45.9	52.5	64.9	73.6	80.9	76.9	65.4	52.4	48.3	38.6	55.4	35.4	54.4	77.1	55.4
1989	39.5	37.1	45.7	53.4	61.8	76.1	78.6	77.6	70.0	59.4	47.1	26.6	56.1	38.4	53.6	77.4	58.8
1990	42.2	44.6	49.6	55.6	63.1	73.1	79.4	74.3	65.9	60.1	49.7	42.7	58.3	37.8	56.1	75.6	58.6
1991	35.5	40.7	46.9	56.3	69.1	72.4	77.9	76.3	67.8	57.6	47.1	40.2	57.3	39.6	57.4	75.6	57.5
1992	35.9	38.8	42.7	53.4	59.8	68.9	76.4	71.2	66.9	53.9	47.3	38.5	54.5	38.3	52.0	72.2	56.0
1993	38.0	32.9	40.5	53.4	65.0	74.0	80.4	76.0	68.6	55.1	46.6	35.5	55.5	36.5	52.9	76.8	56.8
1994	27.0	34.3	43.5	59.3	60.0	76.1	79.7	73.0	68.0	56.7	53.1	42.6	56.1	32.2	54.3	76.2	59.3
1995	38.9	35.2	50.1	57.0	66.5	75.6	82.7	81.2	71.7	63.4	44.9	36.6	58.6	38.9	57.9	79.8	60.0
1996	34.0	38.6	43.4	57.8	64.1	75.8	76.2	72.6	68.5	56.6	41.1	40.4	55.7	36.4	55.1	74.8	55.4
1997	33.7	41.5	46.2	52.2	60.5	69.9	77.4	74.0	67.0	56.2	44.1	39.8	55.2	38.5	53.0	73.8	55.8
1998	41.3	41.4	46.7	56.0	66.5	72.0	78.2	78.5	74.1	58.4	47.2	42.1	58.5	40.8	56.4	76.2	59.9
1999	36.6	38.5	43.3	54.5	64.4	72.2	80.1	77.5	68.4	55.5	49.2	41.2	56.8	39.0	54.1	76.6	57.7
2000	33.9	40.2	50.0	53.1	65.6	72.7	72.4	72.8	65.5	57.2	43.3	29.2	54.7	38.4	56.2	72.6	55.3
2001	32.3	37.5	39.5	54.2	61.7	71.3	70.5	74.7	65.0	57.8	52.7	42.6	55.0	33.0	51.8	72.2	58.5
2002	40.3	40.1	46.2	58.0	63.2	73.1	78.3	78.7	70.2	56.5	46.0	34.9	57.1	41.0	55.8	76.7	57.6
2003	29.5	32.0	45.8	54.3	60.3	70.4	76.2	76.8	69.9	55.7	51.3	36.9	54.9	32.1	53.4	74.5	59.0
2004	27.7	36.6	47.7	58.8	71.8	71.4	76.5	73.8	69.9	56.2	49.2	40.0	56.6	33.8	59.5	73.9	58.4
2005	34.1	38.4	41.2	55.1	59.3	73.4	77.6	77.9	72.1	58.4	49.1	35.0	56.0	37.5	51.8	76.3	59.9
2006	43.2	37.0	46.0	57.1	63.0	72.5	78.0	77.6	66.0	55.6	49.8	43.1	57.4	38.4	55.4	76.1	57.1
2007	39.8	29.6	46.3	52.2	65.5	73.0	76.9	77.8	70.0	63.6	46.5	38.6	56.6	37.5	54.7	75.9	60.0
2008	36.9	38.1	46.1	56.0	61.9	74.7	76.9	73.8	69.2	55.4	45.6	39.7	56.2	37.9	54.6	75.1	56.7
2009	30.0	38.7	43.2	55.8	64.3	72.1	74.6	76.5	66.4	56.1	49.4	35.6	55.2	36.2	54.4	74.4	57.3
2010	33.2	31.3	48.7	58.4	66.3	77.3	79.7	76.8	71.3	58.4	47.4	31.7	56.7	33.3	57.8	77.9	59.0
2011	30.6	39.2	44.3	58.1	67.1	75.3	80.8	75.7	70.9	56.2	51.0	42.8	57.7	33.8	56.5	77.3	59.4
2012	38.8	41.5	54.3	55.3	68.5	72.2	80.9	76.6	68.5	58.1	43.6	43.3	58.5	41.0	59.3	76.5	56.7
2013	38.2	35.8	41.0	56.0	64.3	73.9	78.8	73.9	67.5	59.1	44.0	39.4	56.0	39.1	53.7	75.5	56.9
2014	28.6	34.0	38.9	52.8	65.6	73.4	75.1	72.6	68.9	58.8	44.0	40.4	54.4	34.0	52.5	73.7	57.2
2015	31.5	26.4	41.0	54.7	68.9	74.1	76.9	75.4	72.2	56.5	51.6	49.8	56.6	32.7	54.8	75.5	60.1
2016	32.9	38.1</															

JOINT BASE ANDREWS (ANDREWS AIR FORCE BASE) (ADW)

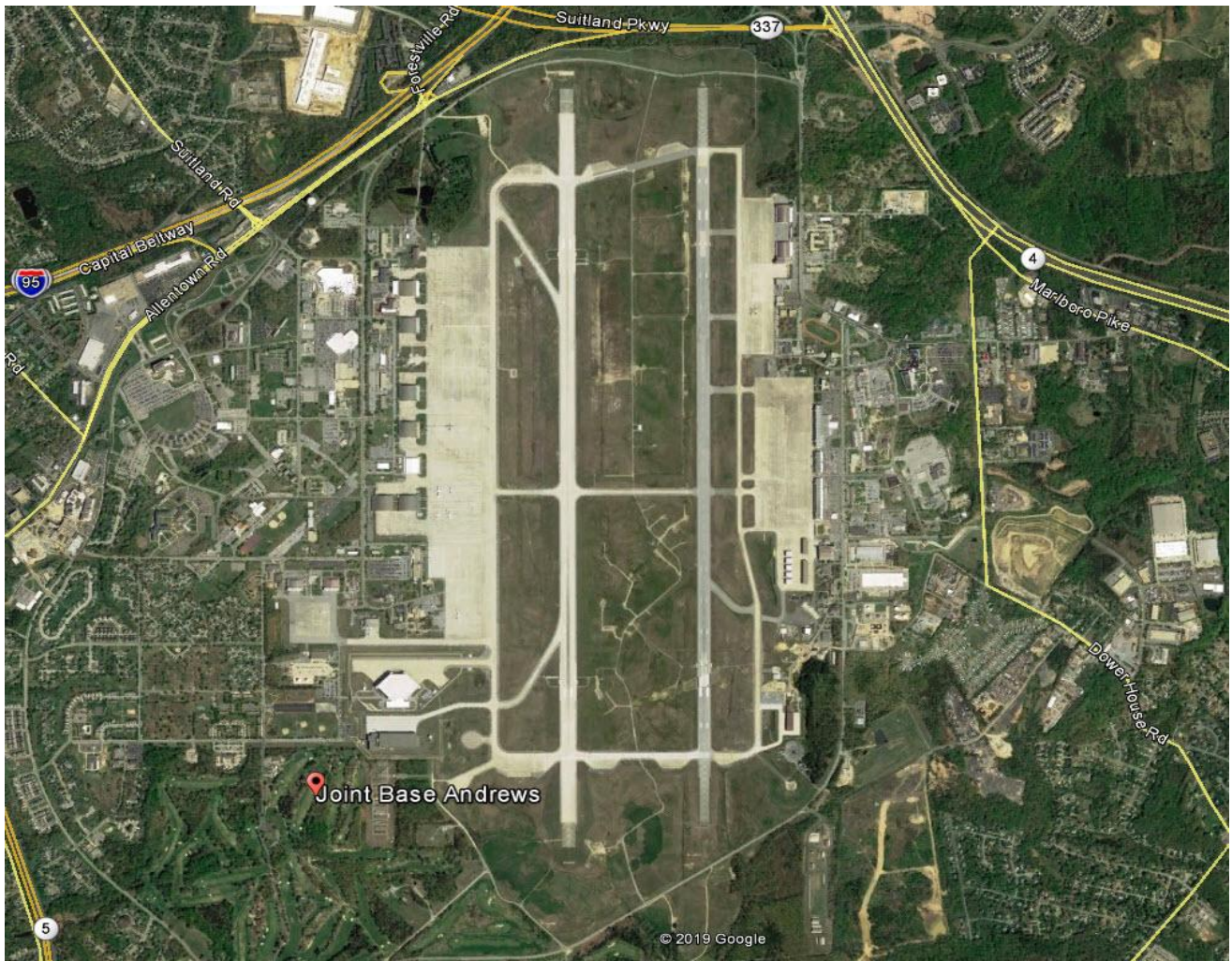


Image from Google Earth